

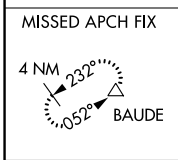
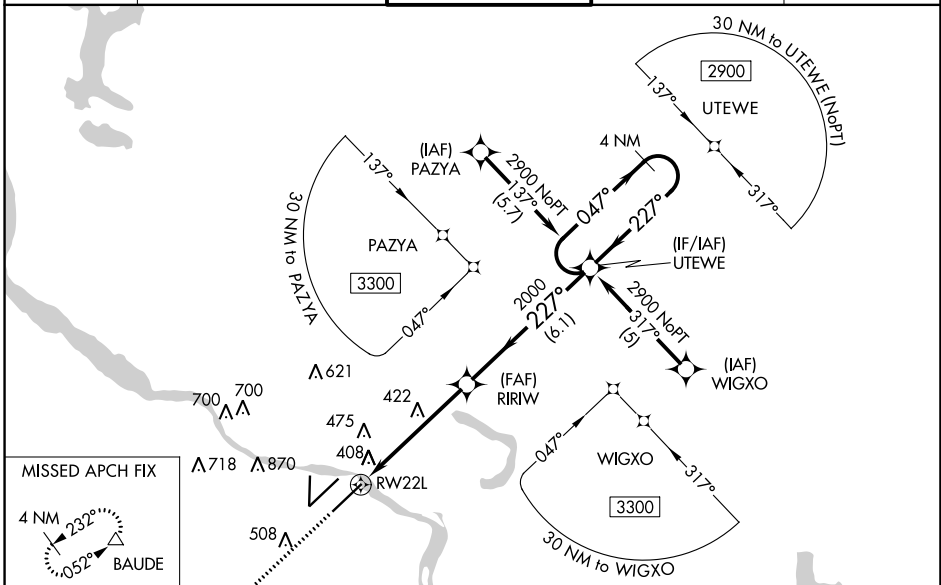
WAAS CH 42811 W22A	APP CRS 227°	Rwy Idg 7200 TDZE 260 Apt Elev 266
--	------------------------	---

RNAV (GPS) RWY 22L

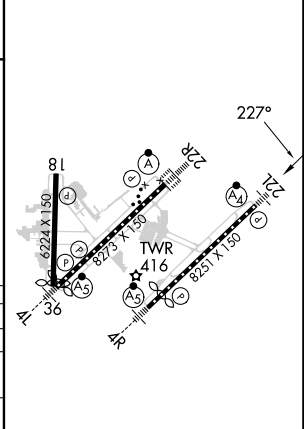
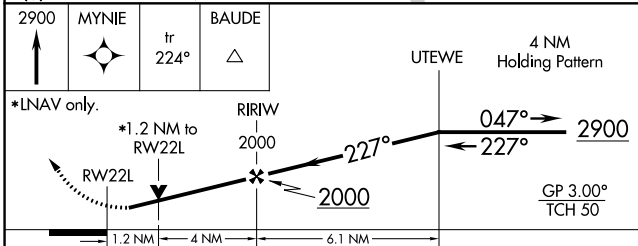
BILL AND HILLARY CLINTON NTL/ADAMS FLD (LIT)

RNP APCH. For uncompensated Baro-VNAV systems, LNAV/VNAV NA below -15°C or above 48°C. ▼ Rwy 22L helicopter visibility reduction below 3/4 SM NA. Inop table does not apply to LPV, LNAV/VNAV or LNAV Cat C and D. For inop ALS, increase LNAV Cat A and B visibility to RVR 5000. Simultaneous approach authorized. LNAV procedure NA during simultaneous operations. Use of FD or AP required during simultaneous operations.	MALSF A5	MISSED APPROACH: Climb to 2900 direct MYNIE and on track 224° to BAUDE and hold.
---	-------------	---

D-ATIS 125.65	LITTLE ROCK APP CON 135.4 353.6	ADAMS TOWER 118.7 257.8	GND CON 121.9 339.8	CLNC DEL 118.95
-------------------------	---	-----------------------------------	-------------------------------	---------------------------



ELEV 266	D	TDZE 260
----------	----------	----------



CATEGORY	A	B	C	D
LPV DA		543/50	283 (300-1)	
LNAV/VNAV DA		774-1 3/4	514 (600-1 3/4)	
LNAV MDA	680/40	420 (500-3/4)	680/60	420 (500-1/4)
C CIRCLING	820-1 554 (600-1)	1000-1 734 (800-1)	1180-2 3/4 914 (1000-2 3/4)	1180-3 914 (1000-3)

MIRL Rwy 18-36
HIRL Rwy 4R-22L and 4L-22R
TDZ/CL Rwy 4L, 4R, 22L and 22R

RNAV (GPS) RWY 22L

SC-1, 22 FEB 2024 to 21 MAR 2024

SC-1, 22 FEB 2024 to 21 MAR 2024