

ROCKT ONE DEPARTURE (RNAV)
(ROCKT1, ROCKT) 15AUG19

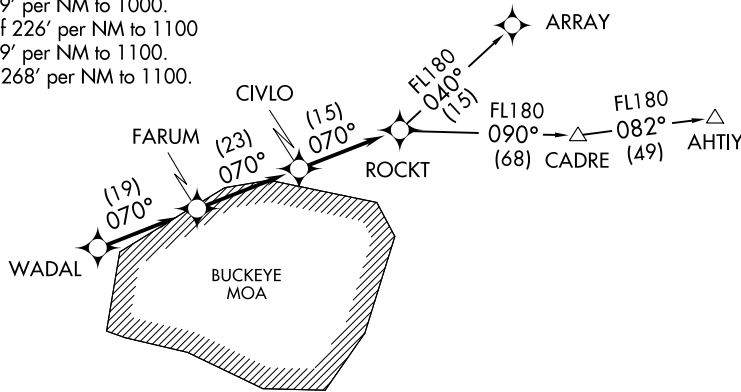
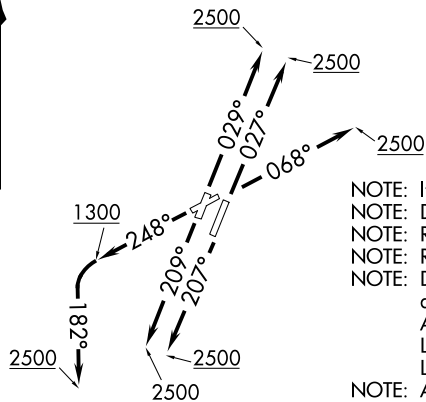
CINCINNATI MUNI/LUNKEN FLD (L, UTK)
CINCINNATI, OHIO

ATIS 123.6
LUNKEN TOWER ★
118.7 (CTAF) 257.8
GND CON
121.9
CLNC DEL
121.9
CLNC DEL
124.9 (When twr closed)
CINCINNATI DEP CON
121.0 254.25

TAKEOFF MINIMUMS

Rwy 3L: 400-2 with minimum climb of 226' per NM to 1300
or standard with minimum climb of 423' per NM to 1000.
Rwy 3R: 400-2 with minimum climb of 233' per NM to 1300
or standard with minimum climb of 384' per NM to 1100.
Rwy 7: 400-1 3/4 with minimum climb of 279' per NM to 1000
or standard with minimum climb of 451' per NM to 1000.
Rwy 21L: 500-2 1/2 with minimum climb of 254' per NM to 1100
or standard with minimum climb of 439' per NM to 1000.
Rwy 21R: 500-2 3/4 with minimum climb of 226' per NM to 1100
or standard with minimum climb of 489' per NM to 1100.
Rwy 25: 600-2 1/2 with minimum climb of 268' per NM to 1100.

**TOP ALTITUDE:
ASSIGNED BY ATC.**



- NOTE: If unable to accept climb rates, advise ATC on initial contact.
- NOTE: DME/DME/IRU or GPS required.
- NOTE: RADAR required.
- NOTE: RNAV 1.
- NOTE: Departure procedure limited to aircraft with the following destination airports and departure times as indicated:
Anytime - ABE, AGC, ALB, AVP, BDL, BKL, BOS, BWI, CAK, CGF, CLE, LNN, LPR, MDT, MHT, PHL, PIT, PNE, PVD, PWM, SWF, TTN, UNV, and overseas flights.
LGA between 1000-1800 UTC.
- NOTE: ARRAY TRANSITION (ROCKT1, ARRAY) limited to aircraft landing: BKL, CAK, CLE, CGF, LNN, LPR.
- NOTE: Accelerate to 250K, if unable advise ATC.

(NARRATIVE ON FOLLOWING PAGE)

NOTE: Chart not to scale.

(ROCKT1, ROCKT) 23166
ROCKT ONE DEPARTURE (RNAV)

AL-83 (FAA)
CINCINNATI MUNI/LUNKEN FLD (L, UTK)
CINCINNATI, OHIO



DEPARTURE ROUTE DESCRIPTION

- TAKEOFF RUNWAY 3L: Climb heading 029° to 2500, for vectors to WADAL, thence
- TAKEOFF RUNWAY 3R: Climb heading 027° to 2500, for vectors to WADAL, thence
- TAKEOFF RUNWAY 7: Climb heading 068° to 2500, for vectors to WADAL, thence
- TAKEOFF RUNWAY 21L: Climb heading 207° to 2500, for vectors to WADAL, thence
- TAKEOFF RUNWAY 21R: Climb heading 209° to 2500, for vectors to WADAL, thence
- TAKEOFF RUNWAY 25: Climb heading 248° to 1300, then climbing left turn heading 182° to 2500, for vectors to WADAL, thence

. . . . on depicted route to ROCKT. Maintain ATC assigned altitude. Expect clearance to filed altitude within 10 minutes after departure.

- AHTIY TRANSITION (ROCKT1.AHTIY)
- ARRAY TRANSITION (ROCKT1.ARRAY)

EC-2, 22 FEB 2024 to 21 MAR 2024

EC-2, 22 FEB 2024 to 21 MAR 2024