

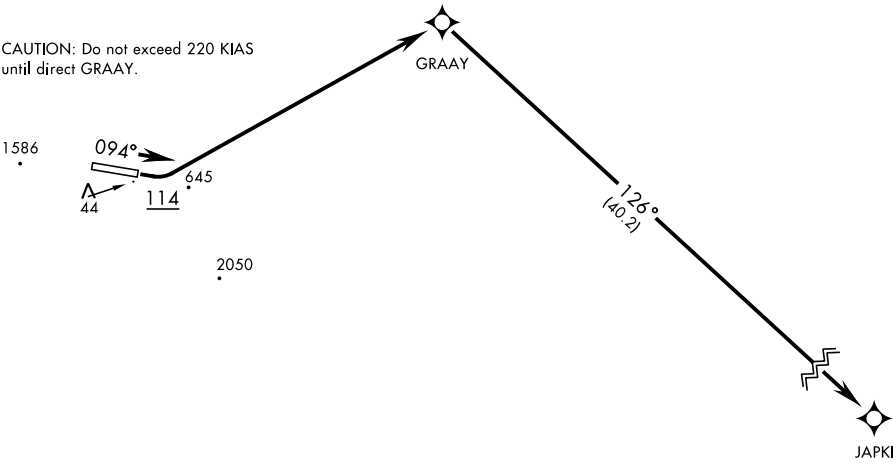
ANCHORAGE CENTER APP/DEP CON 119.65 363.25 KOTZEBUE RADIO 122.3 CTAF 0 126.2	RNAV1 - GPS	Rwy	Knots	60	120	180	240	300	360
		9	V/V(fpm)	362	724	1086	1448	1810	2172

Minimum climb gradient to 600

NOT FOR CIVIL USE

FOR USE BY MILITARY CERTIFIED  
AIRCREWS OR AUTHORIZED  
CONTRACT AIRCRAFT ONLY

CAUTION: Do not exceed 220 KIAS  
until direct GRAAY.



WARNING: High terrain within 2 NM  
of departure end of runway. Prompt  
compliance with departure instructions  
is essential to flight safety. Do not delay  
initial turn at 114°.

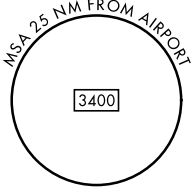
Night operations not authorized.

Procedure NA for CAT E aircraft.

Uncontrolled Airspace below 700' AGL  
within 7 NM of Cape Lisburne airport.

Takeoff minimums: Rwy 9, standard with  
minimum climb or 362ft/NM to 600'.

Use of T228 airway requires aircraft to be  
equipped with TSO-145a/146a capability.



DEPARTURE ROUTE DESCRIPTION

TAKEOFF RWY 9: Climb on heading 094° to 114°, then climbing left turn direct GRAAY, then  
track 126° to JAPKI, maintain 8000 or as assigned by ATC.

TAKEOFF RWY 27: NOT AUTHORIZED