

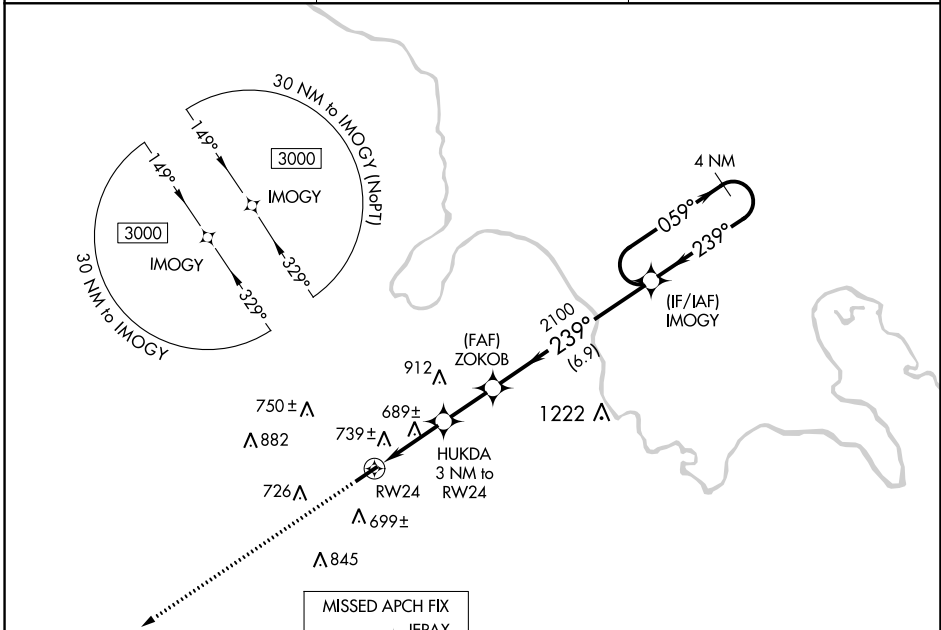
WAAS CH <b>99627</b> <b>W24A</b>	APP CRS <b>239°</b>	Rwy Idg <b>4600</b> TDZE <b>425</b> Apt Elev <b>428</b>
--	------------------------	---

# RNAV (GPS) RWY 24

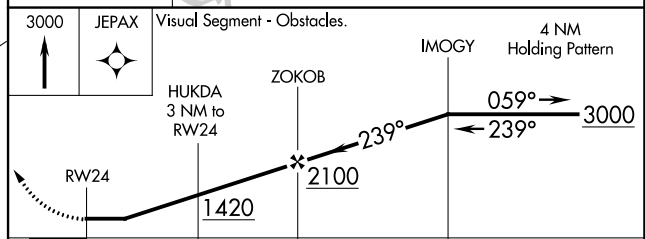
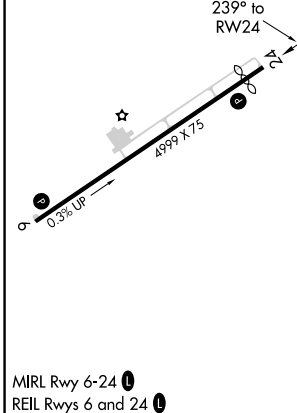
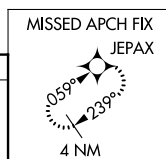
MUHLENBERG COUNTY (M21)

RNP APCH - GPS.	When local altimeter setting not received, use Owensboro altimeter setting and increase all MDAs 80 feet. Increase LP Cats C/D visibility 3/8 SM and LNAV Cats C/D and Circling Cats C/D visibility 1/4 SM. Procedure NA at night. Rwy 24, helicopter visibility reduction below 1 SM NA.	MISSED APPROACH: Climb to 3000 direct JEPAX and hold.
-----------------	---	--

AWOS-3 <b>120.45</b>	CAMPBELL APP CON ★ <b>118.1 269.525</b>	UNICOM <b>123.0 (CTAF)</b>
-------------------------	--	-------------------------------



ELEV 428	<b>D</b>	TDZE 425
----------	----------	----------



CATEGORY	A	B	C	D
LP MDA	940-1	515 (600-1)	940-1 <sup>3</sup> / <sub>8</sub>	515 (600-1 <sup>3</sup> / <sub>8</sub> )
LNAV MDA	1000-1	575 (600-1)	1000-1 <sup>5</sup> / <sub>8</sub>	575 (600-1 <sup>5</sup> / <sub>8</sub> )
<b>C</b> CIRCLING	1040-1 612 (700-1)	1100-1 672 (700-1)	1180-2 <sup>1</sup> / <sub>4</sub> 752 (800-2 <sup>1</sup> / <sub>4</sub> )	1200-2 <sup>1</sup> / <sub>2</sub> 772 (800-2 <sup>1</sup> / <sub>2</sub> )

SE-1, 22 FEB 2024 to 21 MAR 2024

SE-1, 22 FEB 2024 to 21 MAR 2024

WAAS CH <b>56527</b> <b>W06A</b>	APP CRS <b>059°</b>	Rwy Idg <b>4999</b> TDZE <b>420</b> Apt Elev <b>428</b>
--	------------------------	---

# RNAV (GPS) RWY 6

MUHLENBERG COUNTY (M21)

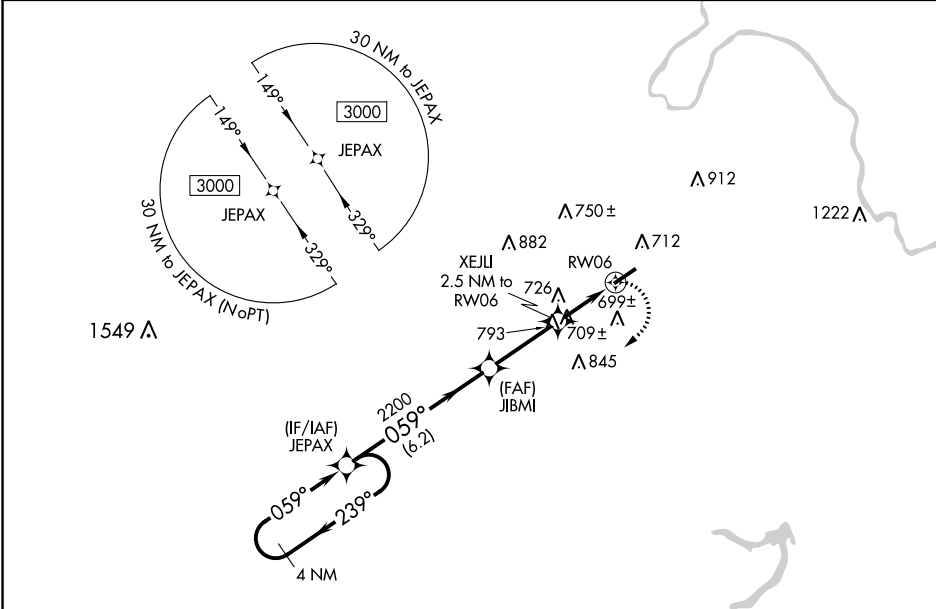
RNP APCH - GPS.

**▼** When local altimeter setting not received, use Owensboro altimeter setting and increase all MDAs 80 feet and LP visibility Cat C/D ¼, LNAV visibility Cat B/C/D ¼, and Circling visibility Cat B/C/D ¼. Rwy 6, helicopter visibility reduction below ¾ SM NA. Circling Rwy 24 NA at night.

**▲ NA**

**MISSED APPROACH:**  
Climbing right turn to 3000 direct JEPAX and hold.

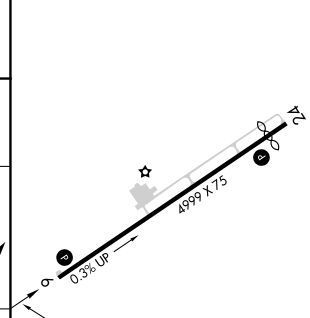
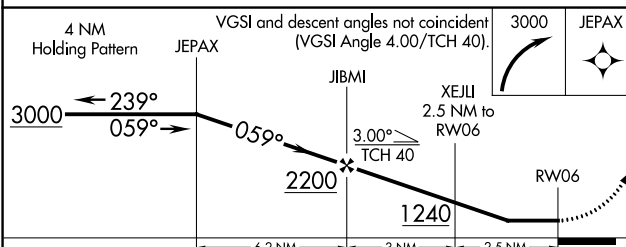
AWOS-3 <b>120.45</b>	CAMPBELL APP CON * <b>118.1 269.525</b>	UNICOM <b>123.0 (CTAF) 0</b>
-------------------------	--	---------------------------------



SE-1, 22 FEB 2024 to 21 MAR 2024

SE-1, 22 FEB 2024 to 21 MAR 2024

ELEV 428	<b>D</b>	TDZE 420
----------	----------	----------



CATEGORY	A	B	C	D
LP MDA	960-1	540 (600-1)	960-1½	540 (600-1½)
LNAV MDA	1100-1	680 (700-1)	1100-1⅞	680 (700-1⅞)
<b>C</b> CIRCLING	1100-1	672 (700-1)	1180-2¼ 752 (800-2¼)	1200-2½ 772 (800-2½)

MIRL Rwy 6-24 0  
REIL Rws 6 and 24 0