

APP CRS	Rwy Idg	5500
003°	TDZE	696
	Apt Elev	718

RNAV (GPS) RWY 2

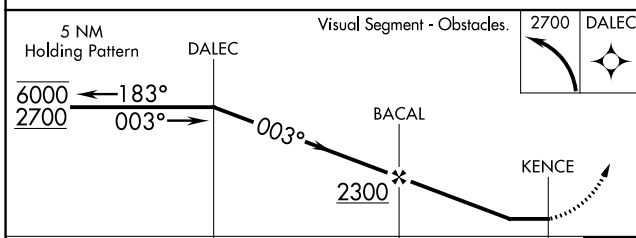
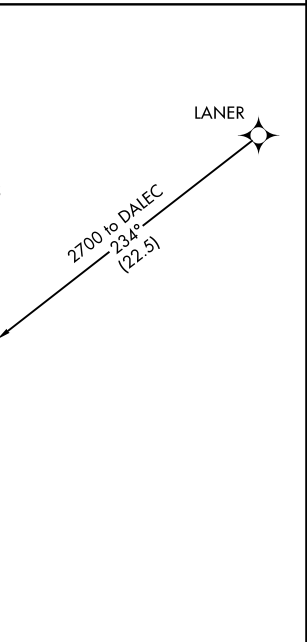
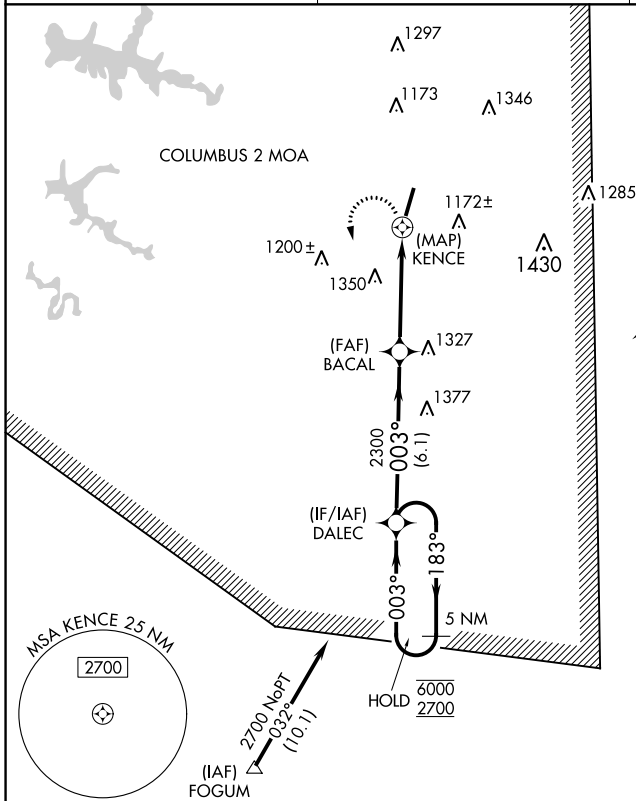
BILL PUGH FLD (M22)

RNP APCH-GPS.

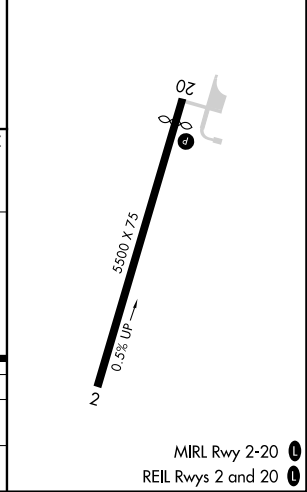
▼ Procedure NA at night. Rwy 2 helicopter visibility reduction below 1 SM NA. Use Muscle Shoals altimeter setting; when not received, use Decatur altimeter setting and increase all MDA 60 feet.

MISSED APPROACH: Climbing left turn to 2700 direct DALEC and hold.

MSL ASOS 119.425	MEMPHIS CENTER 120.8 307.0	UNICOM 122.8 (CTAF) 0
----------------------------	--------------------------------------	---------------------------------



ELEV 718	D TDZE 696
----------	-------------------



CATEGORY	A	B	C	D
LNVA MDA	1660-1¼ 964 (1000-1¼)	1660-1½ 964 (1000-1½)	1660-3	964 (1000-3)
CIRCLING	1660-1¼ 942 (1000-1¼)	1660-1½ 942 (1000-1½)	1720-3	1002 (1100-3)

SE-4, 22 FEB 2024 to 21 MAR 2024

SE-4, 22 FEB 2024 to 21 MAR 2024

MRL Rwy 2-20 **1**
REL Rws 2 and 20 **1**

APP CRS	Rwy Idg	5000
198°	TDZE	717
	Apt Elev	718

RNAV (GPS) RWY 20

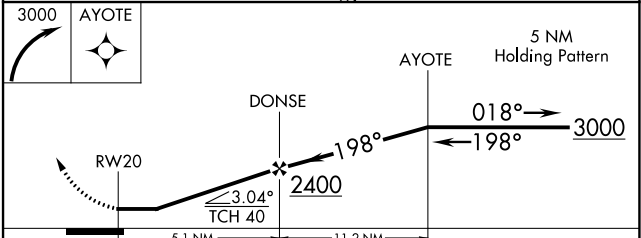
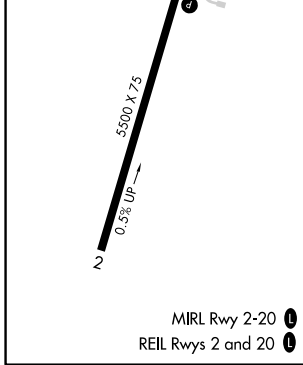
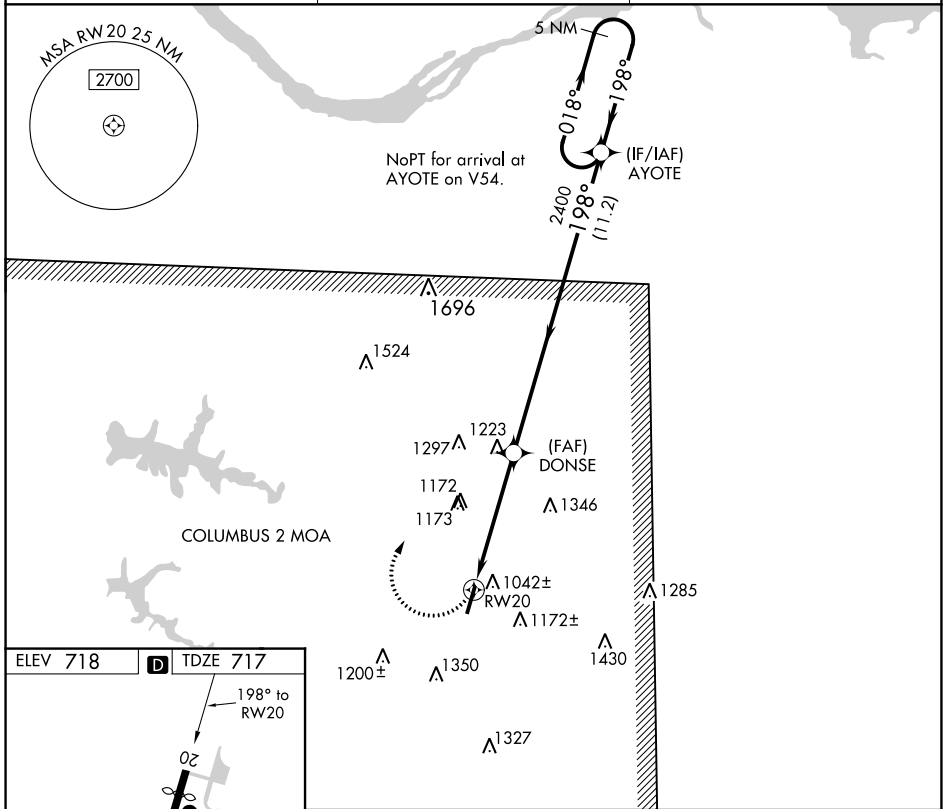
BILL PUGH FLD (M22)

RNP APCH-GPS.

▼ Use Muscle Shoals altimeter setting; when not received, use Decatur altimeter setting and increase all MDA 60 feet, increase LNAV Cat C/D visibility 1/8 SM and Circling Cat A visibility 1/4 SM. Procedure NA at night. Rwy 20 helicopter visibility reduction below 1 SM NA.

▲NA MISSED APPROACH: Climbing right turn to 3000 direct AYOTE and hold.

MSL ASOS 119.425	MEMPHIS CENTER 120.8 307.0	UNICOM 122.8 (CTAF) 0
----------------------------	--------------------------------------	---------------------------------



CATEGORY	A	B	C	D
LNAV MDA	1360-1	643 (700-1)	1360-17/8	643 (700-17/8)
CIRCLING	1520-1 802 (900-1)	1540-1/4 822 (900-1/4)	1720-3	1002 (1100-3)

SE-4, 22 FEB 2024 to 21 MAR 2024

SE-4, 22 FEB 2024 to 21 MAR 2024