

HI-VOR or TACAN RWY 16R

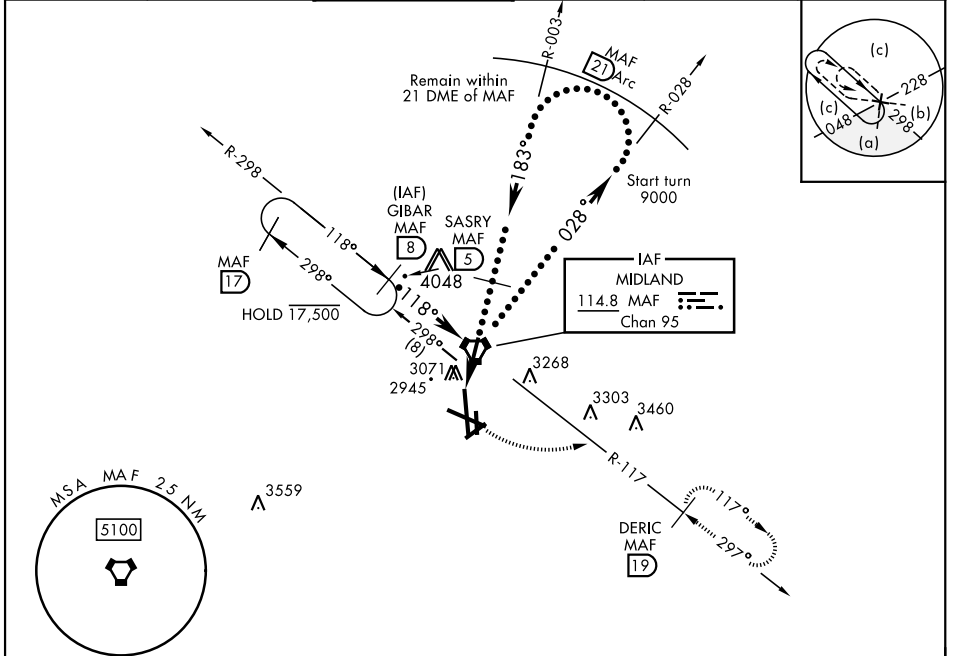
AL-258 [USAF] MIDLAND INTL AIR AND SPACE PORT (KMAF)

VORTAC MAF 114.8 Chan 95	APCH CRS 183°	Rwy ldg TDZE Arprt Elev 9501 2872 2872
--	-------------------------	--

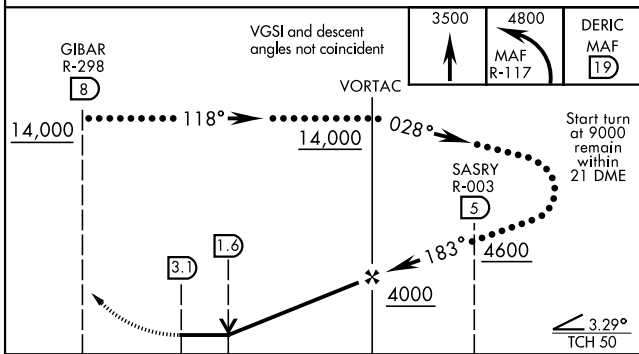
DME required.
* Circling Rwy 16L NA at night.

MISSED APPROACH: Climb to 3500 then climbing left turn to 4800 on MAF VORTAC R-117 to DERIC/MAF 19° DME and hold.

ATIS ★ 126.8 235.975	APP CON 124.6 290.4	TOWER ★ 118.7 (CTAF) 273.45	GND CON 121.9 348.6	CLNC DEL 118.05 317.65	UNICOM 122.95
--------------------------------	-------------------------------	---------------------------------------	-------------------------------	----------------------------------	-------------------------



EMERG SAFE ALT 100 NM 7000



ELEV	2872	TDZE	2872												
GIBAR R-298 (8)		DERIC MAF (19)													
VORTAC		Rwy 10 ldg 8177' Rwy 28 ldg 7610'													
183° 3.1 NM from VORTAC															
<table border="1"> <thead> <tr> <th>CATEGORY</th> <th>C</th> <th>D</th> <th>E</th> </tr> </thead> <tbody> <tr> <td>S-16R</td> <td>3400-1½</td> <td>528 (600-1½)</td> <td></td> </tr> <tr> <td>CIRCLING *</td> <td>3440-1½ 568 (600-1½)</td> <td>3520-2 648 (700-2)</td> <td>3600-2½ 728 (800-2½)</td> </tr> </tbody> </table>				CATEGORY	C	D	E	S-16R	3400-1½	528 (600-1½)		CIRCLING *	3440-1½ 568 (600-1½)	3520-2 648 (700-2)	3600-2½ 728 (800-2½)
CATEGORY	C	D	E												
S-16R	3400-1½	528 (600-1½)													
CIRCLING *	3440-1½ 568 (600-1½)	3520-2 648 (700-2)	3600-2½ 728 (800-2½)												
HIRL Rwy 10-28, 16R-34L MIRL Rwy 4-22, 16L-34R REIL Rwy 34L															

HI-VOR or TACAN RWY 16R

SC-3, 22 FEB 2024 to 21 MAR 2024

SC-3, 22 FEB 2024 to 21 MAR 2024