

FLMGO ONE DEPARTURE (RNAV) Departure Routes

See following page for transition routes.

△ FLMGO

**TOP ALTITUDE:
5000**

D-ATIS 133.675
 CLNC DEL 135.35
 CPDLC
 GND CON
 (Rwys 8L/R, 12, 26L/R) 121.8 348.6
 (Rwys 9, 27, 30) 127.5 348.6
 MIAMI TOWER 118.3 256.9
 MIAMI DEP CON 119.45 290.325

TAKEOFF MINIMUMS

- Rwy 8L: Standard with minimum climb of 500' per NM to 520, then minimum climb of 215' to 1400.
- Rwy 8R: Standard with minimum climb of 500' per NM to 520, then minimum climb of 235' to 1400.
- Rwy 9: Standard with minimum climb of 500' per NM to 520, then minimum climb of 240' to 1400.
- Rwy 12: Standard with minimum climb of 500' per NM to 520, then minimum climb of 230' to 1400.
- Rwys 26L/R, 27, 30: Standard with minimum climb of 500' per NM to 520.

SE-3, 22 FEB 2024 to 21 MAR 2024

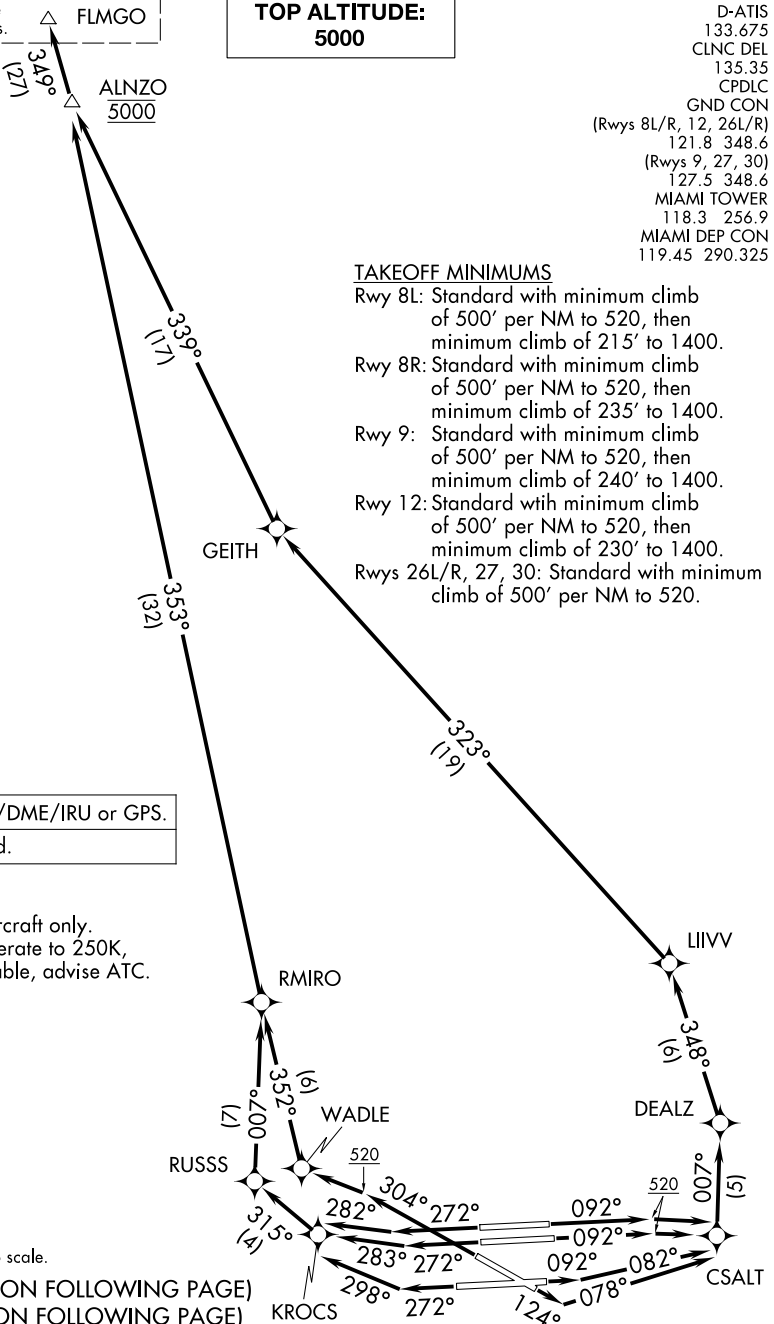
SE-3, 22 FEB 2024 to 21 MAR 2024

RNAV 1 - DME/DME/IRU or GPS.
 RADAR required.

NOTE: Jet aircraft only.
 NOTE: Accelerate to 250K, if unable, advise ATC.

NOTE: Chart not to scale.

(CONTINUED ON FOLLOWING PAGE)
 (NARRATIVE ON FOLLOWING PAGE)



FLMGO ONE DEPARTURE (RNAV) Transition Routes

RNAV 1 - DME/DME/IRU or GPS.

RADAR required.

STYMY

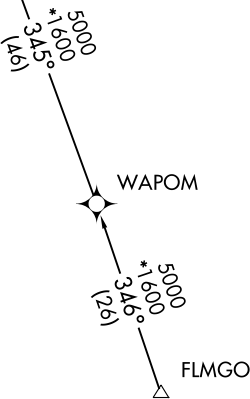
**TOP ALTITUDE:
5000**

D-ATIS
133.675
CLNC DEL
135.35
CPDLC
GND CON
(Rwys 8L/R, 12, 26L/R)
121.8 348.6
(Rwys 9, 27, 30)
127.5 348.6
MIAMI TOWER
118.3 256.9
MIAMI DEP CON
119.45 290.325

- NOTE: Jet aircraft only.
- NOTE: Accelerate to 250K, if unable, advise ATC.
- NOTE: WAPOM Transition ATC assigned except aircraft landing: MCO, DAB, and MLB terminal areas.

TAKEOFF MINIMUMS

- Rwy 8L: Standard with minimum climb of 500' per NM to 520, then minimum climb of 215' to 1400.
- Rwy 8R: Standard with minimum climb of 500' per NM to 520, then minimum climb of 235' to 1400.
- Rwy 9: Standard with minimum climb of 500' per NM to 520, then minimum climb of 240' to 1400.
- Rwy 12: Standard with minimum climb of 500' per NM to 520, then minimum climb of 230' to 1400.
- Rwys 26L/R, 27, 30: Standard with minimum climb of 500' per NM to 520.



NOTE: Chart not to scale.



DEPARTURE ROUTE DESCRIPTION

SEE ADDITIONAL REQUIREMENTS ON AAUP

- TAKEOFF RUNWAYS 8L/8R: Climb on heading 092° to 520, then direct CSALT, then on track 007° to DEALZ, then on track 348° to LIIVV, then on track 323° to GEITH, then on track 339° to cross ALNZO at 5000, thence. . . .
- TAKEOFF RUNWAY 9: Climb on heading 092° to intercept course 082° to CSALT, then on track 007° to DEALZ, then on track 348° to LIIVV, then on track 323° to GEITH, then on track 339° to cross ALNZO at 5000, thence. . . .
- TAKEOFF RUNWAY 12: Climb on heading 124° to intercept course 078° to CSALT, then on track 007° to DEALZ, then on track 348° to LIIVV, then on track 323° to GEITH, then on track 339° to cross ALNZO at 5000, thence. . . .
- TAKEOFF RUNWAY 26L: Climb on heading 272° to intercept course 283° to KROCS, then on track 315° to RUSSS, then on track 007° to RMIRO, then on track 353° to cross ALNZO at 5000, thence. . . .
- TAKEOFF RUNWAY 26R: Climb on heading 272° to intercept course 282° to KROCS, then on track 315° to RUSSS, then on track 007° to RMIRO, then on track 353° to cross ALNZO at 5000, thence. . . .
- TAKEOFF RUNWAY 27: Climb on heading 272° to intercept course 298° to KROCS, then on track 315° to RUSSS, then on track 007° to RMIRO, then on track 353° to ALNZO at 5000, thence. . . .
- TAKEOFF RUNWAY 30: Climb on heading 304° to 520, then direct WADLE, then on track 352° to RMIRO, then on track 353° to cross ALNZO at 5000, thence. . . .

. . . .on track 349° to FLMGO, then on assigned transition. Maintain 5000. Expect filed altitude within 10 minutes after departure.

STYMY TRANSITION (FLMGO1.STYMY)
WAPOM TRANSITION (FLMGO1.WAPOM)

SE-3, 22 FEB 2024 to 21 MAR 2024

SE-3, 22 FEB 2024 to 21 MAR 2024