

APP CRS	Rwy Idg	<b>2103</b>
<b>008°</b>	TDZE	<b>182</b>
	Apt Elev	<b>182</b>

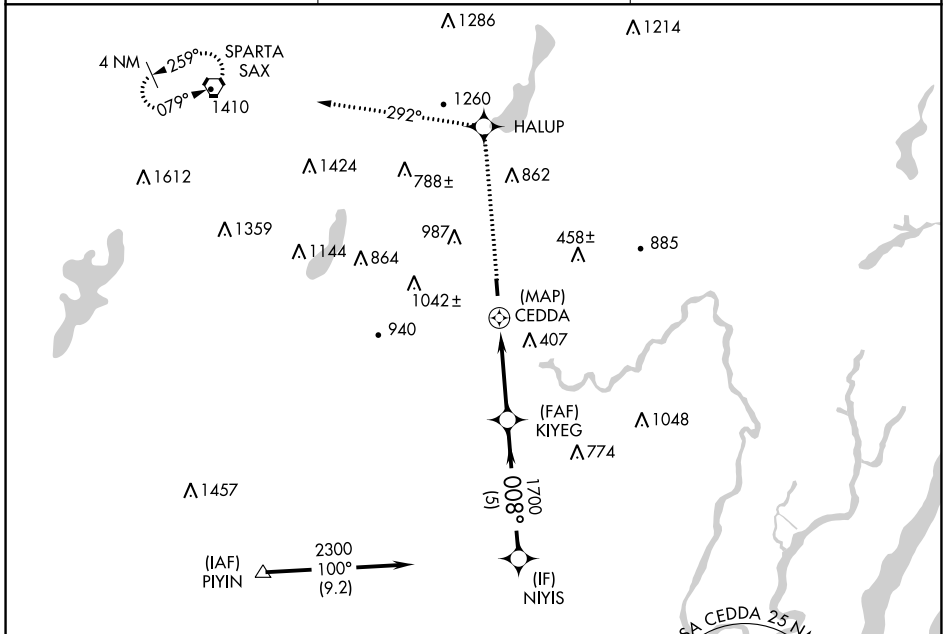
# RNAV (GPS) RWY 1

LINCOLN PARK (NØ7)

**▽** Use Teterboro altimeter setting. DME/DME RNP-0.3 NA.  
**▲** NA Visibility reduction by helicopters NA.

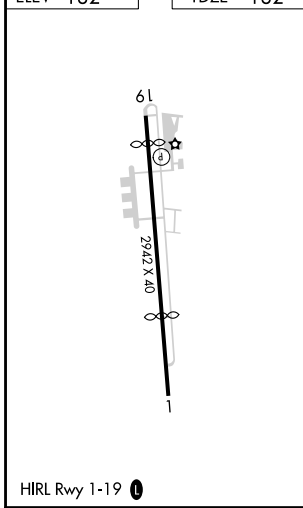
MISSED APPROACH: Climb to 3000 direct HALUP and via 292° track to SAX VORTAC and hold.

NEW YORK APP CON <b>127.6 379.9</b>	GCO <b>121.725</b>	UNICOM <b>122.8 (CTAF) 0</b>
--	-----------------------	---------------------------------



ELEV <b>182</b>	TDZE <b>182</b>
-----------------	-----------------

Procedure NA for arrivals at PIYIN via V3-405-419 southwestbound.



	3000 HALUP	tr 292°	SAX	NIYIS
				2300
				Procedure Turn NA
	1 NM	3.7 NM	5 NM	
CATEGORY	A	B	C	D
LNAV MDA	1240-1¼ 1058 (1100-1¼)		NA	
CIRCLING	1460-1¼ 1278 (1300-1¼)		NA	

NE-2, 15 JUL 2021 to 12 AUG 2021

NE-2, 15 JUL 2021 to 12 AUG 2021

APP CRS	Rwy Idg	<b>2683</b>
<b>203°</b>	TDZE	<b>182</b>
	Apt Elev	<b>182</b>

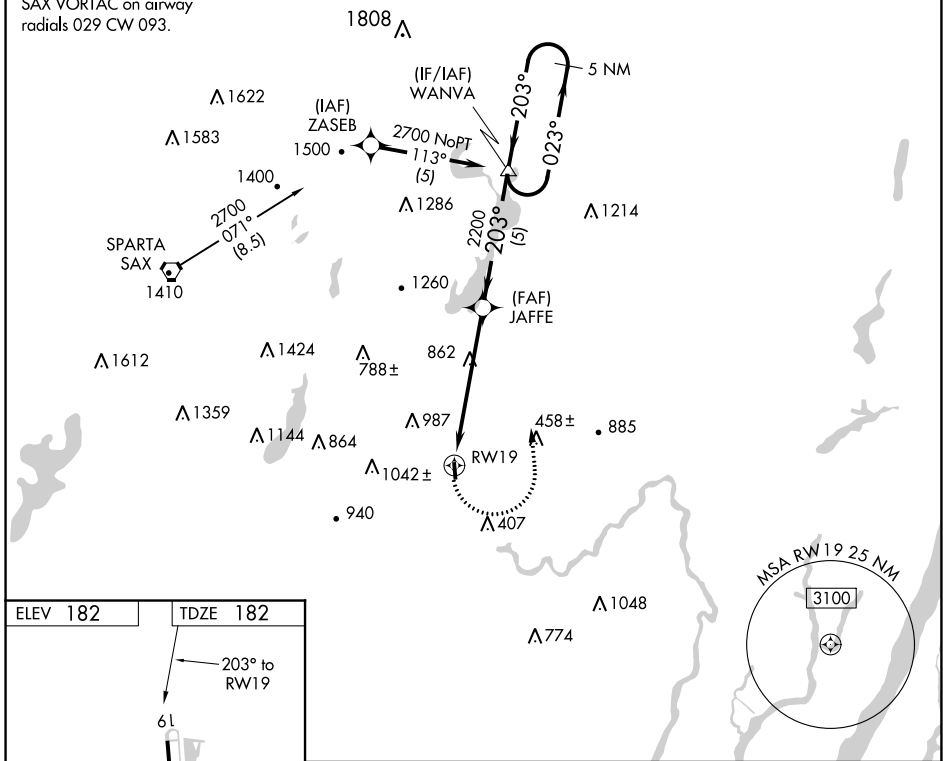
# RNAV (GPS) RWY 19

LINCOLN PARK (NØ7)

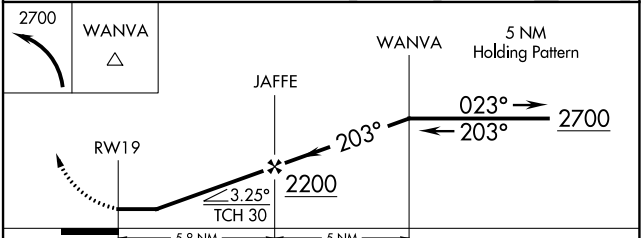
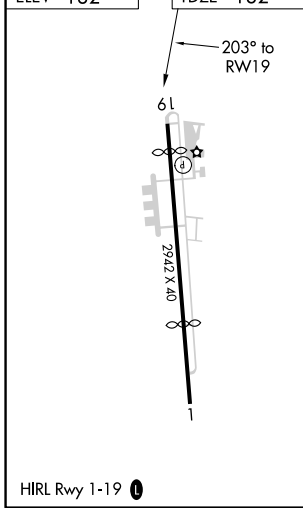
<p><b>▼</b> Use Teterboro altimeter setting. DME/DME RNP-0.3 NA.</p> <p><b>▲</b> NA Visibility reduction by helicopters NA.</p>	<p>MISSED APPROACH: Climbing left turn to 2700 direct WANVA and hold.</p>
---	---

<p>NEW YORK APP CON <b>127.6 379.9</b></p>	<p>GCO <b>121.725</b></p>	<p>UNICOM <b>122.8</b> (CTAF) <b>Ø</b></p>
--	-------------------------------	--

Procedure NA for arrivals at SAX VORTAC on airway radials 029 CW 093.



ELEV 182	TDZE 182
----------	----------



CATEGORY	A	B	C	D
LNAV MDA	1280-1¼ 1098 (1100-1¼)		NA	
CIRCLING	1460-1¼ 1278 (1300-1¼)		NA	

NE-2, 15 JUL 2021 to 12 AUG 2021

NE-2, 15 JUL 2021 to 12 AUG 2021