

WAAS CH <b>58130</b> <b>W10A</b>	APP CRS <b>099°</b>	Rwy Idg TDZE <b>1892</b> Apt Elev <b>1892</b>	<b>3597</b>
--	------------------------	---	-------------

# RNAV (GPS) RWY 10

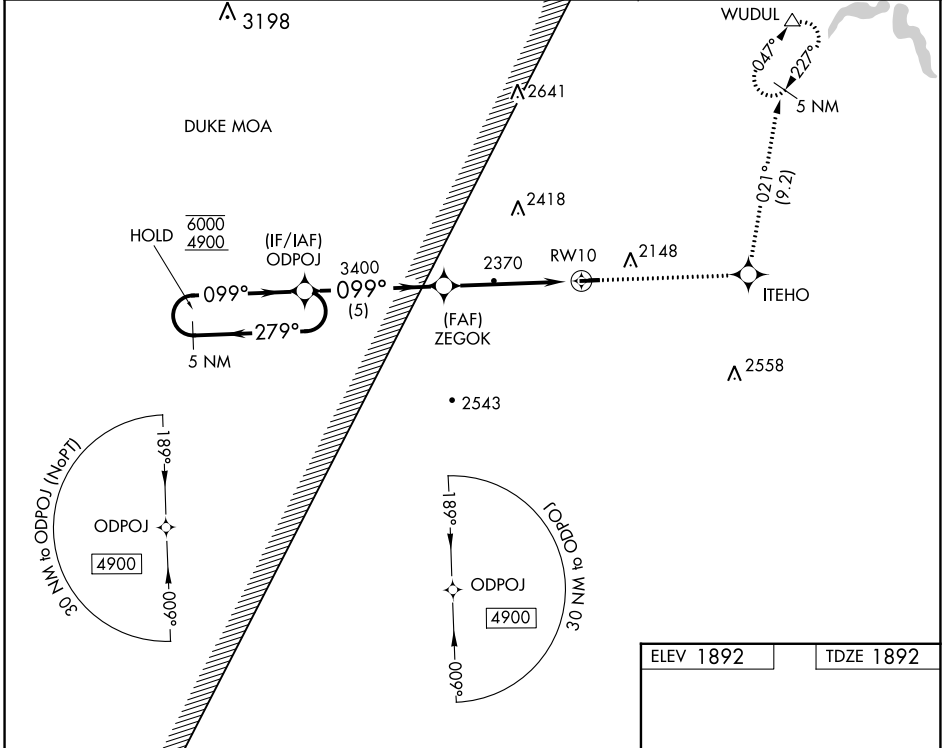
GRAND CANYON RGNL (N38)

RNP APCH.

**▼** Circling NA to Rwys 11 and 29. Procedure NA at night.  
**▲** Rwy 10 helicopter visibility reduction below 1 SM NA.

MISSED APPROACH: Climb to 4500 direct ITEHO and on track 021° to WUDUL and hold.

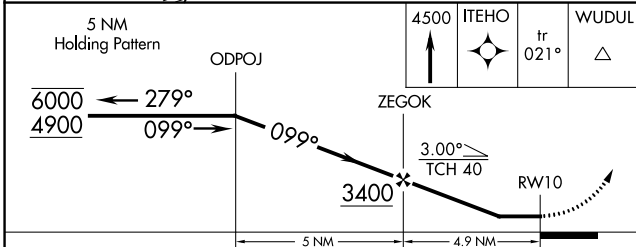
AWOS-3PT <b>120.925</b>	ELMIRA APP CON ★ <b>128.425 257.8</b>	UNICOM <b>122.8</b> (CTAF) <b>📻</b>
----------------------------	--	--



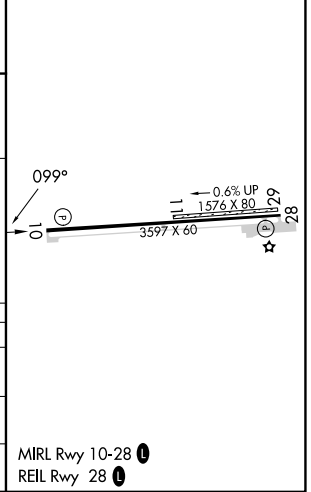
NE-4, 22 FEB 2024 to 21 MAR 2024

NE-4, 22 FEB 2024 to 21 MAR 2024

ELEV 1892	TDZE 1892
-----------	-----------



CATEGORY	A	B	C	D
LP MDA	2760-1 868 (900-1)	2760-1¼ 868 (900-1¼)	2760-2½ 868 (900-2½)	NA
LNAV MDA	2760-1 868 (900-1)	2760-1¼ 868 (900-1¼)	2760-2½ 868 (900-2½)	NA
<b>C</b> CIRCLING	2760-1¼ 868 (900-1¼)	2760-2½ 868 (900-2½)	2760-2½ 868 (900-2½)	NA



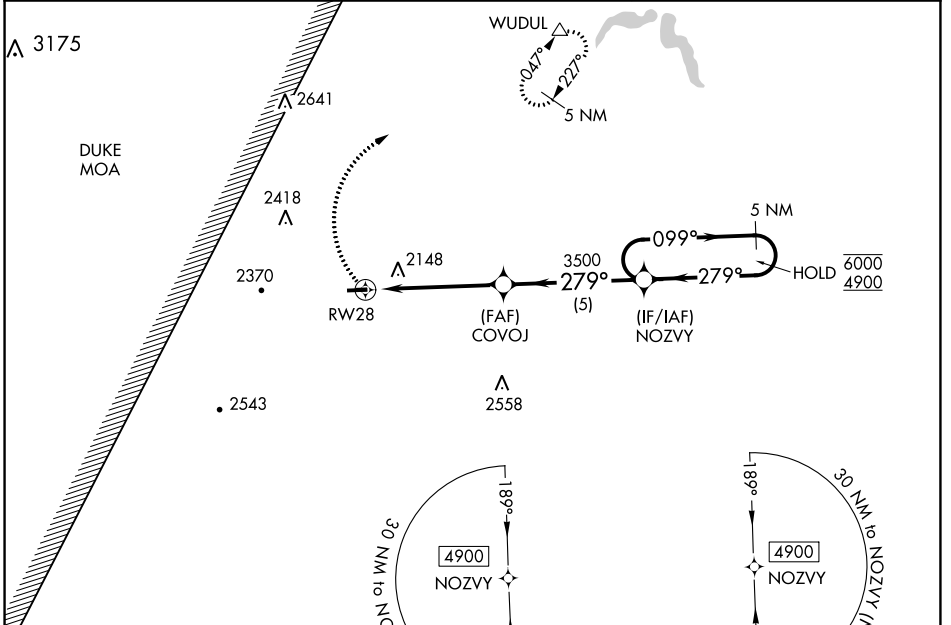
MIRL Rwy 10-28 **📻**  
REIL Rwy 28 **📻**

WAAS CH <b>99530</b> <b>W28A</b>	APP CRS <b>279°</b>	Rwy Idg TDZE Apt Elev	<b>3597</b> <b>1892</b> <b>1892</b>
--	------------------------	-----------------------------	---

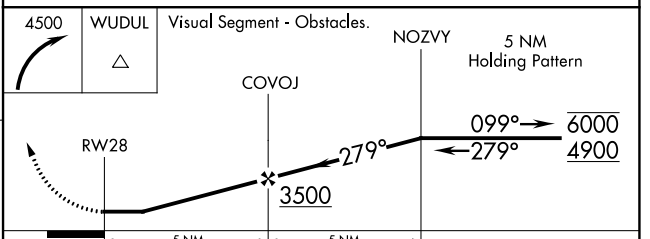
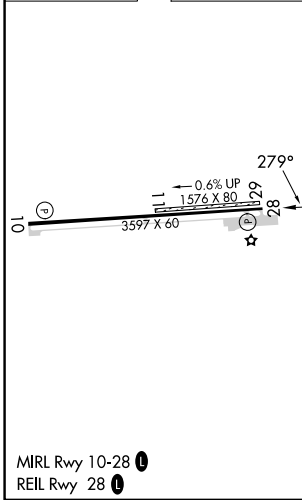
# RNAV (GPS) RWY 28

GRAND CANYON RGNL (N38)

RNP APCH.	<p>⚠ Circling NA to Rwy 11 and 29. Procedure NA at night. Rwy 28 helicopter visibility reduction below 1 SM NA.</p>	MISSED APPROACH: Climbing right turn to 4500 direct WUDUL and hold.
AWOS-3PT <b>120.925</b>	ELMIRA APP CON ★ <b>128.425 257.8</b>	UNICOM <b>122.8 (CTAF) 0</b>



ELEV 1892	TDZE 1892
-----------	-----------



CATEGORY	A	B	C	D
LP MDA	2300-1	408 (500-1)	2300-1 $\frac{1}{8}$ 408 (500-1 $\frac{1}{8}$ )	NA
LNAV MDA	2420-1	528 (600-1)	2420-1 $\frac{1}{2}$ 528 (600-1 $\frac{1}{2}$ )	NA
<b>C</b> CIRCLING	2680-1	788 (800-1)	2740-2 $\frac{1}{2}$ 848 (900-2 $\frac{1}{2}$ )	NA

NE-4, 22 FEB 2024 to 21 MAR 2024

NE-4, 22 FEB 2024 to 21 MAR 2024