


WAAS CH <b>70409</b> <b>W24A</b>	APP CRS <b>237°</b>	Rwy Idg TDZE Apt Elev	<b>4199</b> <b>1758</b> <b>1763</b>
--	------------------------	-----------------------------	---

# RNAV (GPS) RWY 24

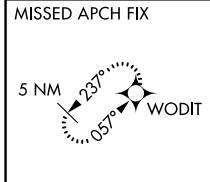
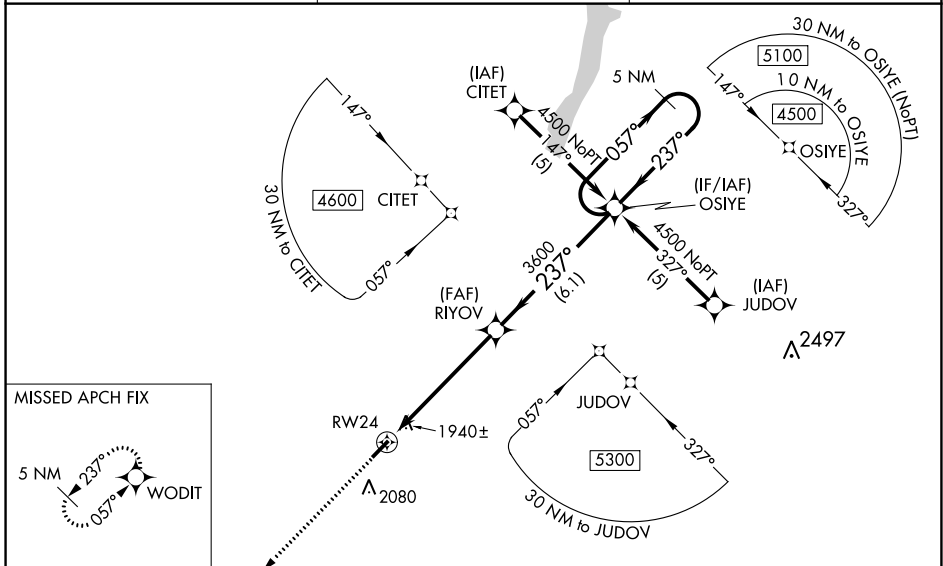
ALBERT S NADER RGNL (N66)

RNP APCH.

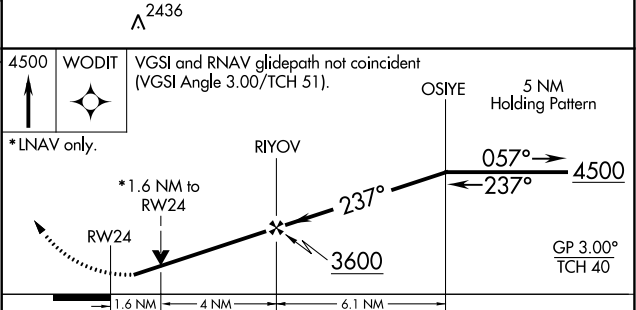
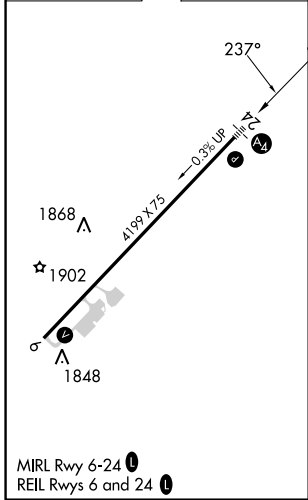
▼ When local altimeter setting not received, use Binghamton altimeter setting and increase LPV DA to 2313 feet, LNAV/VNAV DA to 2380 feet, and all MDAs 140 feet; increase LPV and LNAV/VNAV visibilities all Cats ½ SM. Baro-VNAV NA when using Binghamton altimeter setting. For uncompensated Baro-VNAV systems, LNAV/VNAV NA below -18°C or above 54°C. Rwy 6 helicopter visibility reduction below ¾ SM NA. Inop table does not apply. VDP NA when using Binghamton altimeter setting. Circling Rwy 6 NA at night.

MALS  MISSED APPROACH: Climb to 4500 direct WODIT and hold.

AWOS-3 <b>119.575</b>	BOSTON CENTER <b>133.25 279.5</b>	UNICOM <b>122.8 (CTAF) 0</b>
--------------------------	--------------------------------------	---------------------------------



ELEV 1763	TDZE 1758
-----------	-----------



CATEGORY	A	B	C	D
LPV DA	2191-1½	433 (500-1½)		NA
LNAV/VNAV DA	2258-1¾	500 (500-1¾)		NA
LNAV MDA	2300-1	542 (600-1)		NA
CIRCLING	2380-1	617 (700-1)		NA

NE-2, 22 FEB 2024 to 21 MAR 2024

NE-2, 22 FEB 2024 to 21 MAR 2024

WAAS CH <b>86309</b> <b>W06A</b>	APP CRS <b>057°</b>	Rwy Idg TDZE Apt Elev	<b>4199</b> <b>1763</b> <b>1763</b>
--	------------------------	-----------------------------	---

# RNAV (GPS) RWY 6

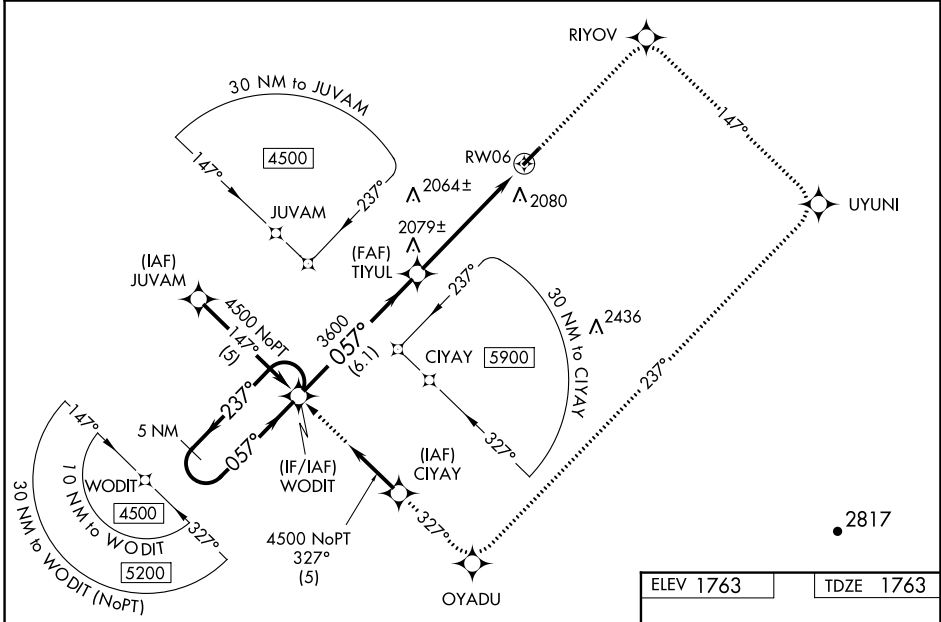
ALBERT S NADER RGNL (N66)

RNP APCH.

**NA** When local altimeter setting not received, use Binghamton altimeter setting: increase LPV DA to 2197 feet, LNAV/VNAV DA to 2473 feet, and all MDAs 140 feet; increase LPV and LNAV/VNAV visibilities all Cats ½ SM. Baro-VNAV NA when using Binghamton altimeter setting. For uncompensated Baro-VNAV systems, LNAV/VNAV NA below -18°C or above 54°C. Rwy 6 helicopter visibility reduction below 1 SM NA. Procedure NA at night.

**MISSED APPROACH:** Climb to 4500 direct RIYOV and right turn on track 147° to UYUNI and right turn on track 237° to OYADU and on track 327° to WODIT and hold.

AWOS-3 <b>119.575</b>	BOSTON CENTER <b>133.25 279.5</b>	UNICOM <b>122.8 (CTAF) 0</b>
--------------------------	--------------------------------------	---------------------------------

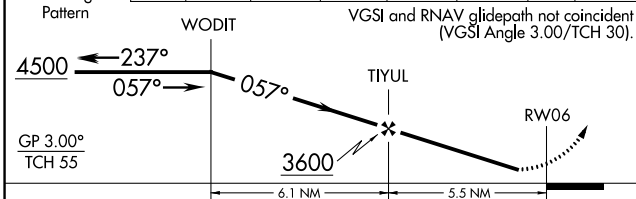


NE-2, 22 FEB 2024 to 21 MAR 2024

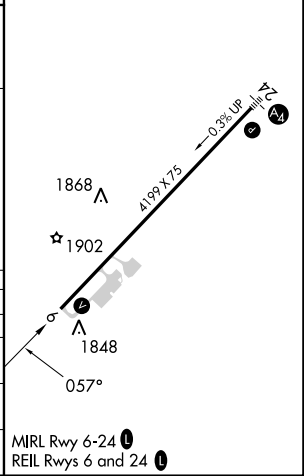
NE-2, 22 FEB 2024 to 21 MAR 2024

5 NM Holding Pattern	4500	RIYOV	UYUNI	OYADU	tr 327°	WODIT
----------------------	------	-------	-------	-------	---------	-------

VGSI and RNAV glidepath not coincident (VGSI Angle 3.00/TCH 30).



ELEV 1763	TDZE 1763
-----------	-----------



CATEGORY	A	B	C	D
LPV DA	2075-1	312 (400-1)		NA
LNAV/VNAV DA	2351-2	588 (600-2)		NA
LNAV MDA	2260-1	497 (500-1)		NA
CIRCLING	2380-1	617 (700-1)		NA

MIRL Rwy 6-24  
REIL Rws 6 and 24