

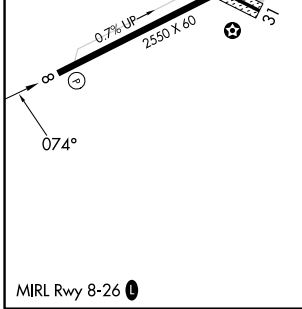
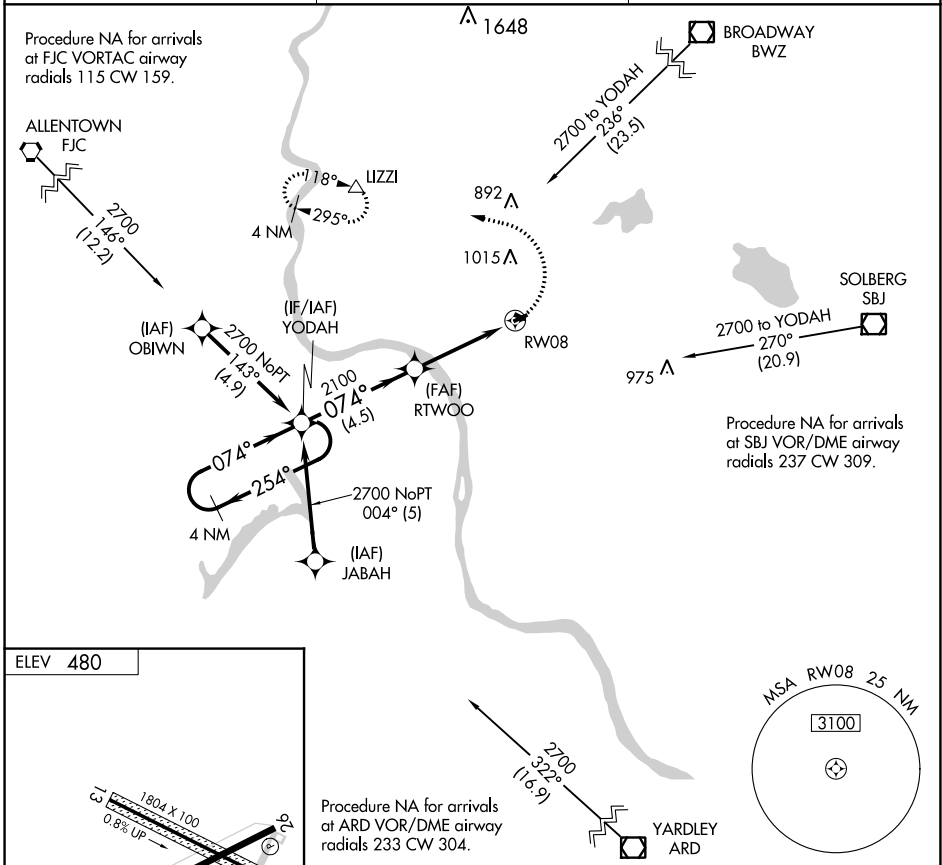
APP CRS	Rwy Idg	N/A
074°	TDZE	N/A
	Apt Elev	480

# RNAV (GPS)-A

## ALEXANDRIA (N85)

<p><b>▽</b> DME/DME RNP-0.3 NA. Use Lehigh Valley Intl, Allentown, PA altimeter setting. Procedure NA at night. Helicopter visibility reduction below 1 SM NA.</p> <p><b>▲</b> NA</p>	<p>MISSED APPROACH: Climbing left turn to 3000 direct BZZZ and hold, continue climb-in-hold to 3000.</p>
---	--

<p>ALLENTOWN APP CON</p> <p><b>119.65 124.45 351.8</b></p>	<p>UNICOM</p> <p><b>122.975 (CTAF)</b></p>	<p><b>121.8 0</b></p>
--	--	-----------------------



<p>4 NM Holding Pattern YODAH</p> <p>VGSI and descent angles not coincident (VGSI Angle 4.00/TCH 30).</p>		<p>3000</p> <p>LIZZI</p>		
<p>2700 ← 254°</p> <p>074° →</p> <p>074°</p>		<p>RTWOO</p> <p>RW08</p> <p>3.77° TCH 35</p>		
<p>CATEGORY</p>	<p>A</p>	<p>B</p>	<p>C</p>	<p>D</p>
<p><b>☑</b> CIRCLING</p>	<p>1240-1</p> <p>760 (800-1)</p>	<p>NA</p>		

NE-2, 22 FEB 2024 to 21 MAR 2024

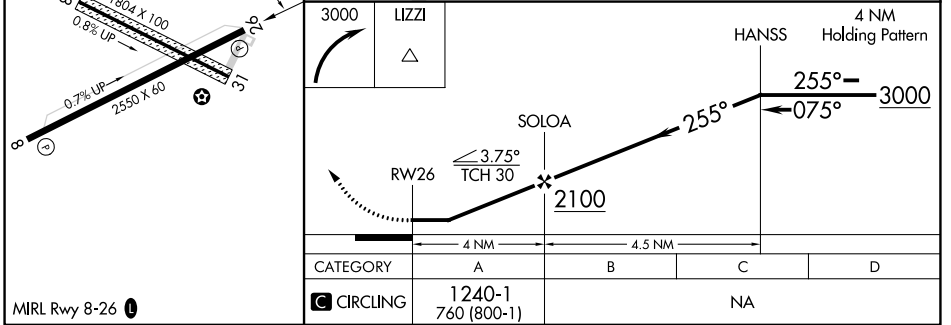
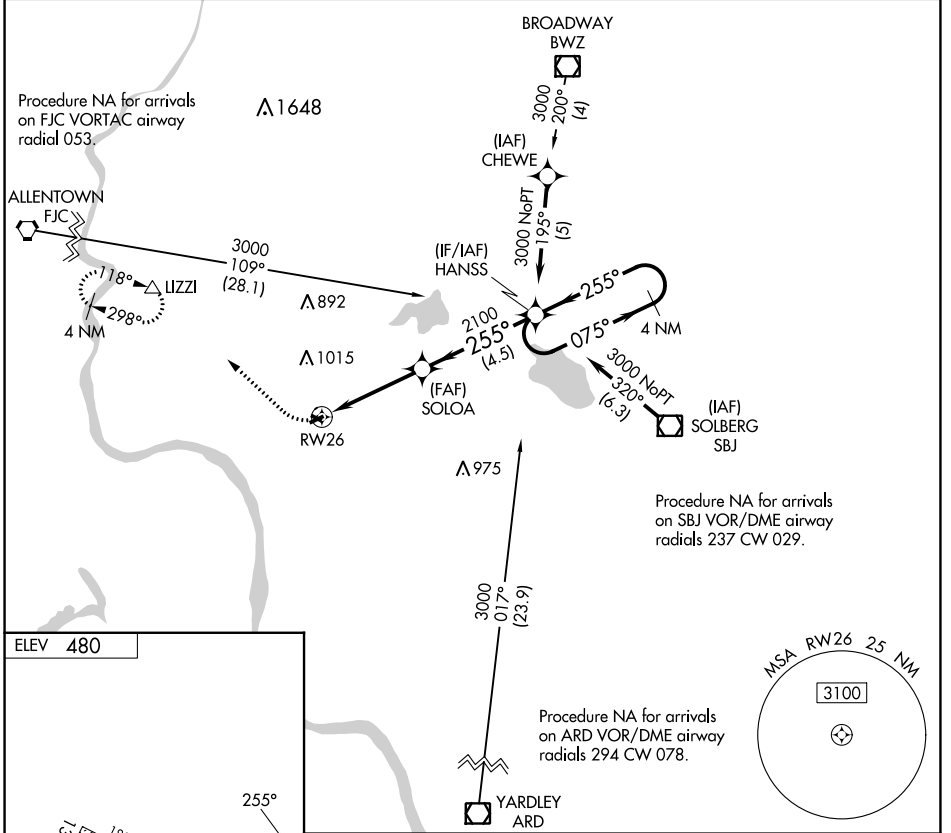
NE-2, 22 FEB 2024 to 21 MAR 2024

APP CRS	Rwy Idg	NA
255°	TDZE	NA
	Apt Elev	480

# RNAV (GPS)-B

ALEXANDRIA (N85)

<p><b>▽</b> NA</p> <p>DME/DME RNP-0.3 NA. Use Lehigh Valley Intl, Allentown, PA altimeter setting. Procedure NA at night. Helicopter visibility reduction below 1 SM NA.</p>	<p>MISSED APPROACH: Climbing right turn 3000 direct LIZZI and hold.</p>
<p>ALLENTOWN APP CON</p> <p><b>119.65 124.45 351.8</b></p>	<p>UNICOM</p> <p><b>122.975 (CTAF)</b></p>
<p><b>121.8 0</b></p>	



NE-2, 22 FEB 2024 to 21 MAR 2024

NE-2, 22 FEB 2024 to 21 MAR 2024

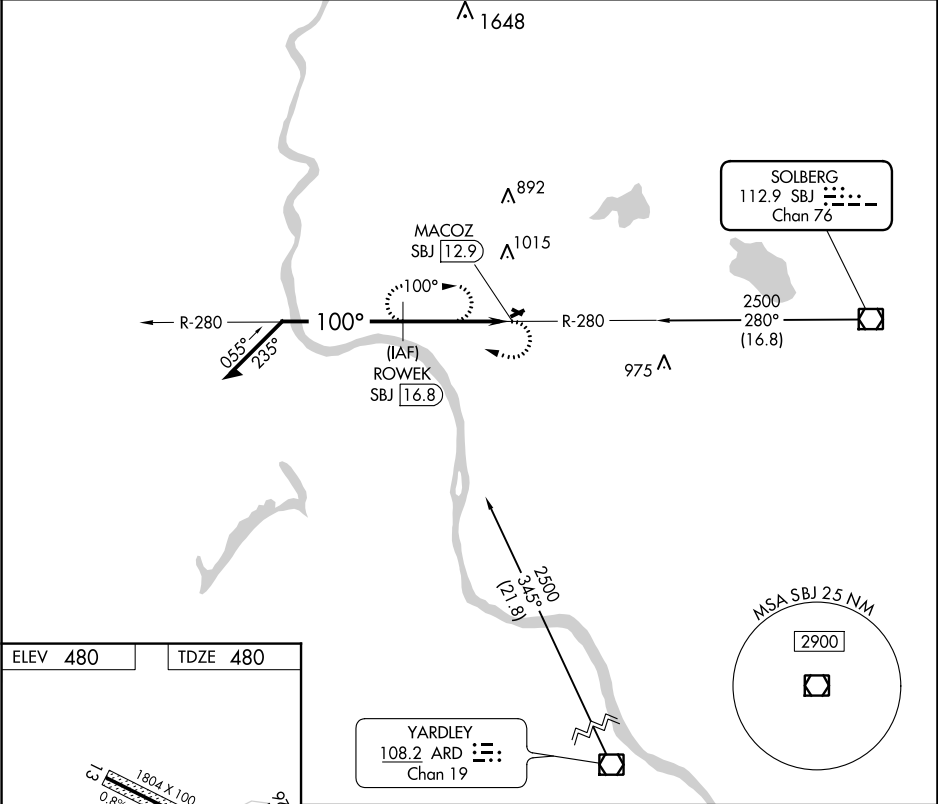
VOR/DME SBJ	APP CRS	Rwy Idg	2550
112.9	100°	TDZE	480
Chan 76		Apt Elev	480

# VOR/DME RWY 8

ALEXANDRIA (N85)

<p><b>▼</b> Use Lehigh Valley Intl, Allentown, PA altimeter setting.  <b>▲ NA</b> Procedure NA at night.          Helicopter visibility reduction below 1 SM NA.</p>	<p>MISSED APPROACH: Climbing right turn to 2500 on SBJ VOR/DME R-280 to ROWEK/16.8 DME and hold.</p>
--	--

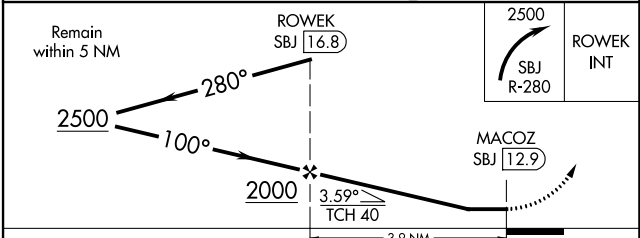
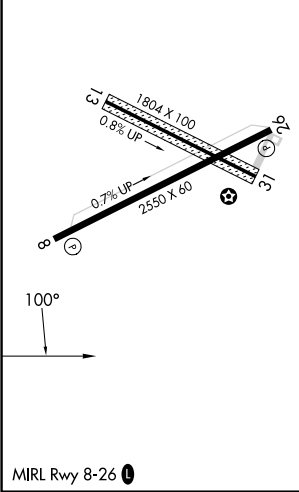
<p>ALLENTOWN APP CON  <b>119.65 124.45 351.8</b></p>	<p>UNICOM  <b>122.975 (CTAF)</b></p>	<p><b>121.8 0</b></p>
--	--	-----------------------



NE-2, 22 FEB 2024 to 21 MAR 2024

NE-2, 22 FEB 2024 to 21 MAR 2024

ELEV 480	TDZE 480
----------	----------



CATEGORY	A	B	C	D
S-8	1420-1 940 (1000-1)		NA	
<b>C</b> CIRCLING	1420-1 940 (1000-1)		NA	