

SAN DIEGO, CALIFORNIA

VOR/DME RWY 29

VORTAC PGY 116.45 Chan 111(Y)	APCH CRS 279°	Rwy ldg TDZE Arprt Elev 7500 26 26
---	-------------------------	--

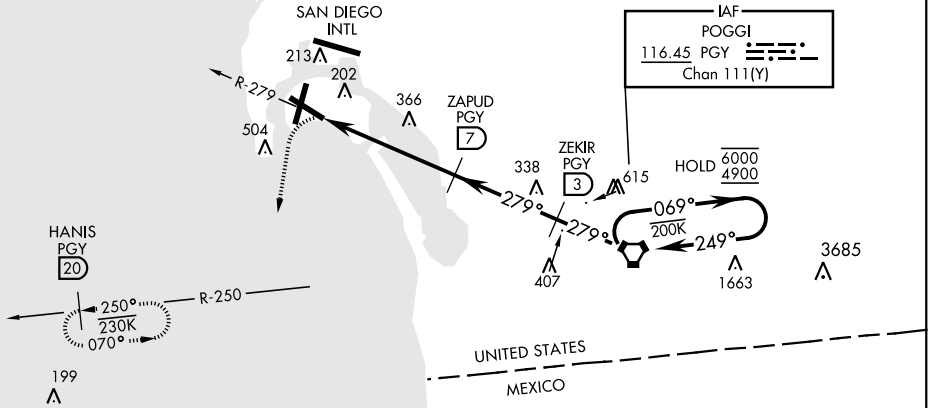
AL-374 [USN] NORTH ISLAND NAS (HALSEY FIELD) (KNZY)

<p>▼ * When ALS inop, increase CAT AB vis to 1 mile, CAT CD vis to 1¾ miles. ** Circling not authorized W of Rwy 18-36. Circling authorized to Rwy 18 only.</p>	<p>ALSF-1 </p>	<p>MISSED APPROACH: Climbing left turn to 2000 via hdg 177° intercept PGY VORTAC R-250 to HANIS and hold.</p>
---	--------------------	---

ATIS ★ 317.8	SOCAL APP CON 125.15 317.55	TOWER ★ 135.1 336.4	GND CON 118.0 360.675	CLNC DEL 128.4 288.25	PAR/ASR
------------------------	---------------------------------------	-------------------------------	---------------------------------	---------------------------------	---------

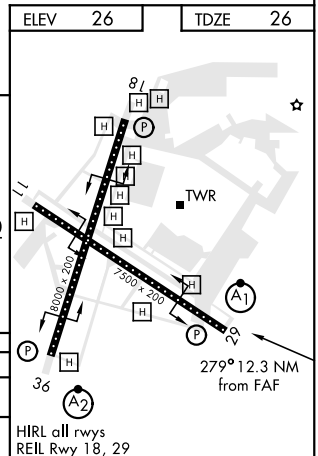
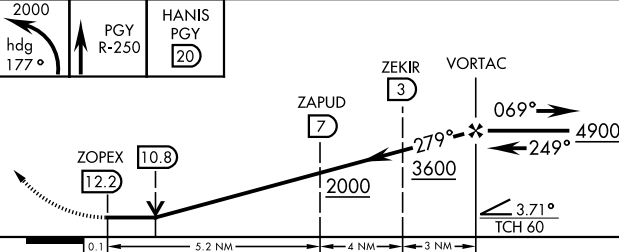
Visibility reduction by helicopters not authorized.

CAUTION:
Final apch length 12.2 NM.
Final apch intersects RCL at 3726 ft.
Final apch crs 117 ft from RCL at 3000 ft from thld.



RADAR required for westbound V317 arrivals at PGY VORTAC.

EMERG SAFE ALT 100 NM 13,600



CATEGORY	A	B	C	D
S-29 *	660-¾ 634 (700-¾)		660-1¾ 634 (700-1¾)	
◻ CIRCLING **	660-1 634 (700-1)		NOT AUTHORIZED	

SAN DIEGO, CALIFORNIA
Amdt 8 05NOV20

32°42'N-117°13'W NORTH ISLAND NAS (HALSEY FIELD) (KNZY)

VOR/DME RWY 29

SW-3, 22 FEB 2024 to 21 MAR 2024

SW-3, 22 FEB 2024 to 21 MAR 2024