

WAAS CH 42524 W10A	APP CRS 096°	Rwy Idg TDZE Apt Elev	3013 237 237
--	------------------------	-----------------------------	---

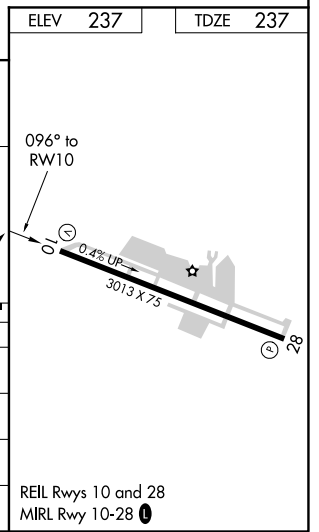
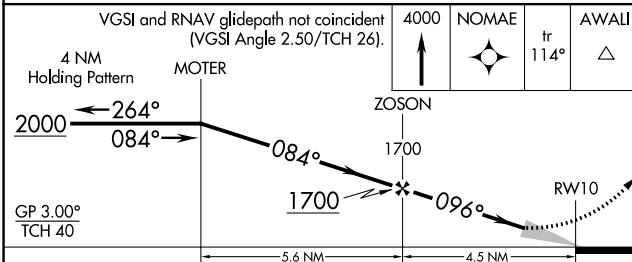
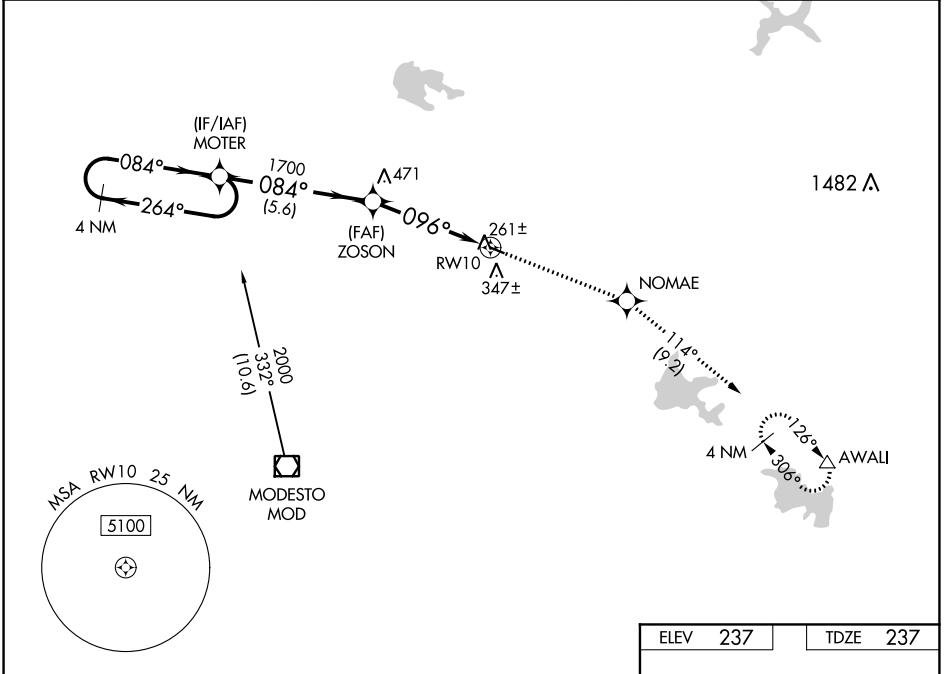
RNAV (GPS) RWY 10

OAKDALE (O27)

Baro-VNAV NA. DME/DME RNP-0.3 NA.
NA Use Modesto altimeter setting; when not received, use Stockton altimeter setting and increase all DA 36 feet and all MDA 40 feet; increase LPV and LNAV/VNAV all Cats and LNAV Cat C visibility 1/8 SM.

MISSED APPROACH: Climb to 4000 direct NOMAE and on track 114° to AWALI and hold, continue climb-in-hold to 4000.

MOD ASOS 127.7	NORCAL APP CON 125.1 363.2	UNICOM 122.8 (CTAF)
--------------------------	--------------------------------------	-------------------------------



CATEGORY	A	B	C	D
LPV DA	531-1 294 (300-1)			NA
LNAV/VNAV DA	555-1 1/8 318 (400-1 1/8)			NA
LNAV MDA	760-1 523 (600-1)	760-1 1/2 523 (600-1 1/2)		NA
C CIRCLING	760-1 523 (600-1)	820-1 583 (600-1)	920-2 683 (700-2)	NA

SW-2, 15 JUL 2021 to 12 AUG 2021

SW-2, 15 JUL 2021 to 12 AUG 2021

WAAS CH 70523 W28A	APP CRS 277°	Rwy Idg 3013 TDZE 237 Apt Elev 237
--	------------------------	---

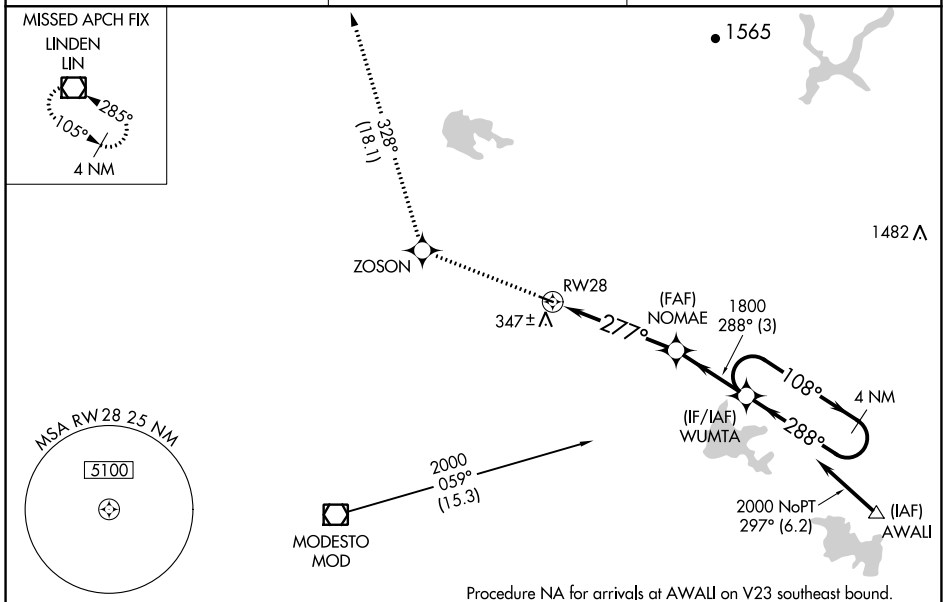
RNAV (GPS) RWY 28

OAKDALE (O27)

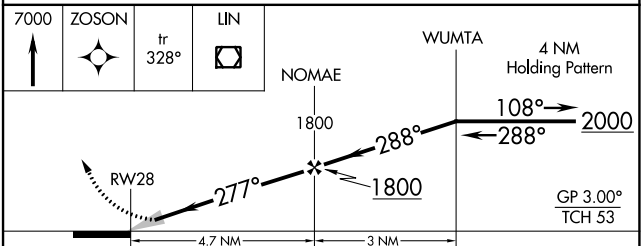
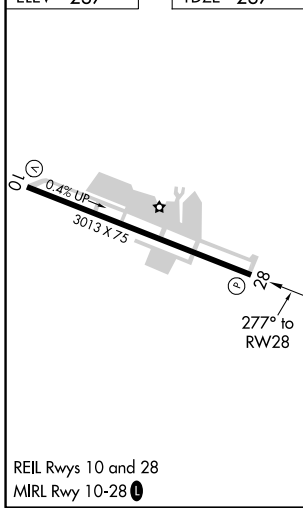
NA Baro-VNAV NA. DME/DME RNP-0.3 NA. Use Modesto altimeter setting; when not received, use Stockton altimeter setting and increase LPV DA to 567 feet and all visibilities $\frac{1}{4}$ SM; increase LNAV/VNAV DA to 570 feet and all visibilities $\frac{1}{8}$ SM; increase all MDAs 40 feet.

MISSED APPROACH: Climb to 7000 direct ZOSON and on track 328° to LIN VOR/DME and hold, continue climb-in-hold to 7000.

MOD ASOS 127.7	NORCAL APP CON 125.1 363.2	UNICOM 122.8 (CTAF)
--------------------------	--------------------------------------	-------------------------------



ELEV 237	TDZE 237
----------	----------



CATEGORY	A	B	C	D
LPV DA	531-7 $\frac{8}{16}$	294 (300-7 $\frac{8}{16}$)		NA
LNAV/VNAV DA	534-1	297 (300-1)		NA
LNAV MDA	820-1	583 (600-1)	820-1 $\frac{3}{4}$ 583 (600-1 $\frac{3}{4}$)	NA
C CIRCLING	820-1	583 (600-1)	920-2 683 (700-2)	NA

SW-2, 15 JUL 2021 to 12 AUG 2021

SW-2, 15 JUL 2021 to 12 AUG 2021

VOR/DME MOD 114.6 Chan 93	APP CRS 027°	Rwy Idg TDZE Apt Elev	N/A N/A 237
---	------------------------	-----------------------------	--

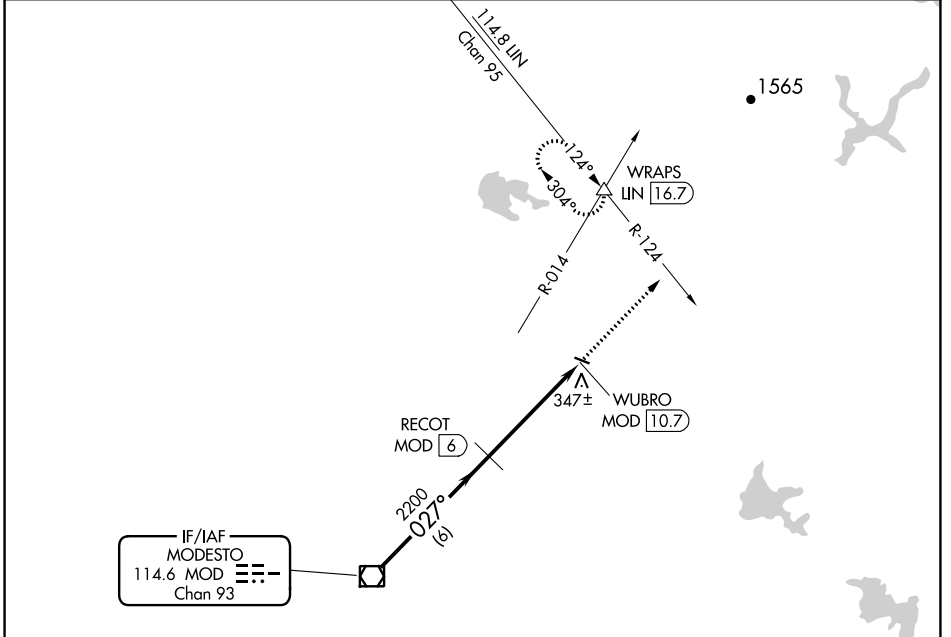
VOR-A

OAKDALE (O27)

▼ DME required.
▲NA Use Modesto altimeter setting, when not received, use Stockton altimeter setting and increase all MDA 40 feet.

MISSED APPROACH: Climb to 3000 on heading 027° and LIN R-124 to WRAPS INT/LIN 16.7 DME and hold, continue climb-in-hold to 3000.

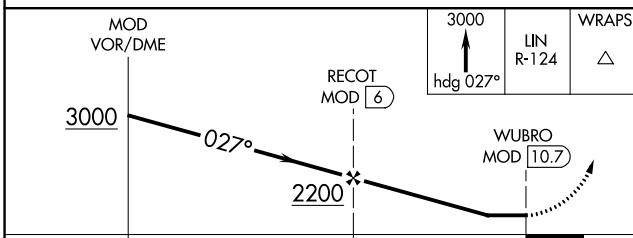
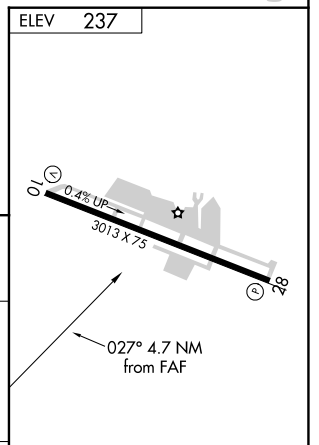
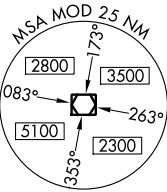
MOD ASOS 127.7	NORCAL APP CON 125.1 363.2	UNICOM 122.8 (CTAF)
--------------------------	--------------------------------------	-------------------------------



SW-2, 15 JUL 2021 to 12 AUG 2021

SW-2, 15 JUL 2021 to 12 AUG 2021

IF/IAF
 MODESTO
 114.6 MOD
 Chan 93



CATEGORY	A	B	C	D
C CIRCLING	820-1	583 (600-1)	920-2 683 (700-2)	NA

REIL Rwy 10 and 28
 MRL Rwy 10-28 **0**