

WAAS CH 82325 W25A	APP CRS 252°	Rwy Idg TDZE Apt Elev	4199 23 23
--	------------------------	-----------------------------	---------------------------------------

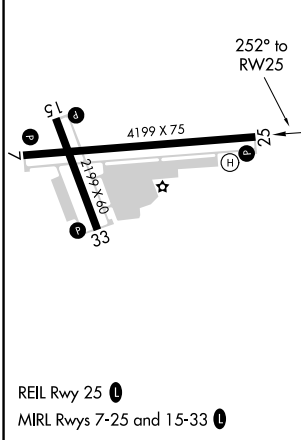
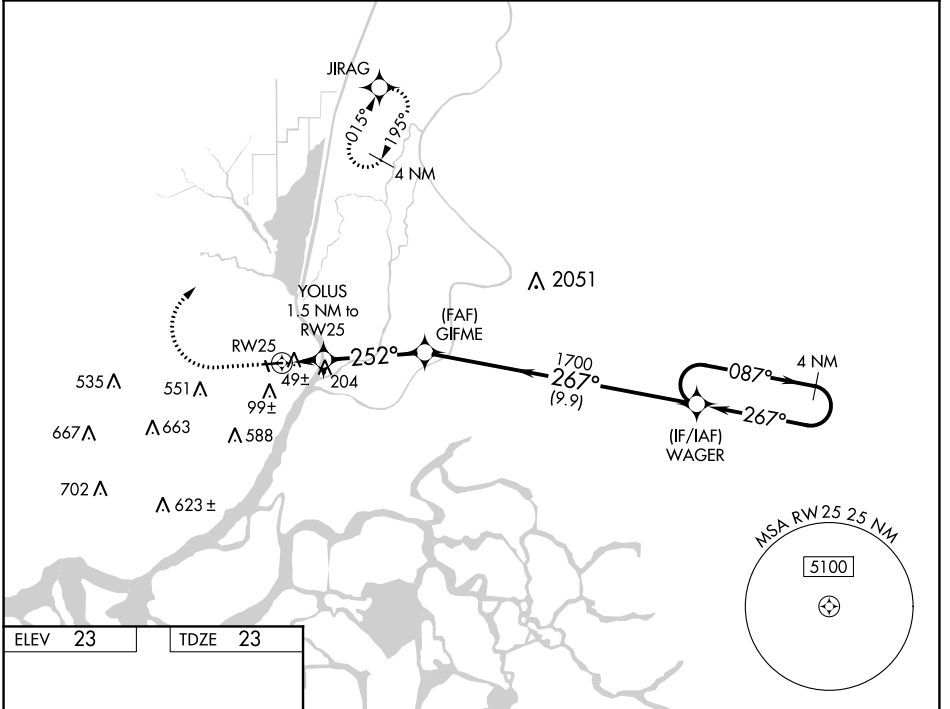
RNAV (GPS) RWY 25

RIO VISTA MUNI (O88)

⚠ NA Circling Rwy 33 NA at night. DME/DME RNP-0.3 NA. VDP NA when using Concord altimeter setting. When local altimeter setting not received, use Concord altimeter setting and increase all MDA 60 feet and increase LP and LNAV Cat C visibility 1/8 mile and Circling Cat C visibility 1/4 mile.

MISSED APPROACH: Climb to 500 then climbing right turn to 3100 direct JIRAG and hold, continue climb-in-hold to 3100.

AWOS-AV 127.075	TRAVIS APP CON 119.9 322.325	UNICOM 122.725 (CTAF) 📻
---------------------------	--	--



ELEV 23	TDZE 23	<p>500 3100 JIRAG VGSi and descent angles not coincident (VGSi Angle 4.00/TCH 40).</p> <p>4 NM Holding Pattern</p>			
<p>252° to RW25</p>		<p>YOLUS 1.5 NM to RW25</p> <p>GIFME WAGER</p> <p>0.6 NM to RW25</p> <p>3.00° TCH 40</p> <p>1700</p> <p>0.6 0.9 3.6 NM 9.9 NM</p>			
CATEGORY	A	B	C	D	
LP MDA	300-1	277 (300-1)	300-7/8 277 (300-7/8)	NA	
LNAV MDA	460-1	437 (500-1)	460-1 1/4 437 (500-1 1/4)	NA	
CIRCLING	520-1 497 (500-1)	560-1 537 (600-1)	580-1 1/2 557 (600-1 1/2)	NA	

SW-2, 09 SEP 2021 to 07 OCT 2021

SW-2, 09 SEP 2021 to 07 OCT 2021