

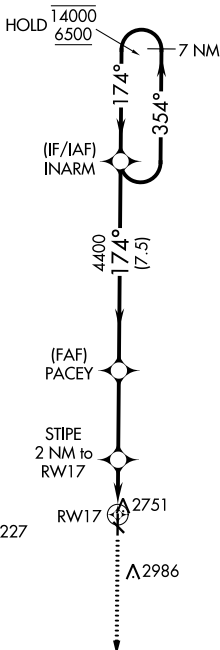
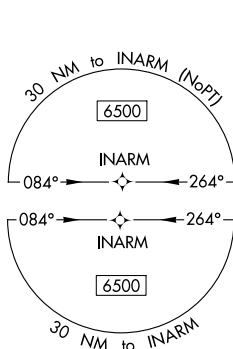
WAAS CH 63037 W17A	APP CRS 174°	Rwy Idg TDZE Apt Elev	4301 2707 2707
--	------------------------	-----------------------------	---

RNAV (GPS) RWY 17

OBERLIN MUNI (OIN)

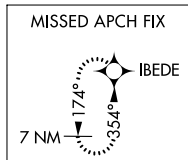
RNP APCH-GPS.	MISSED APPROACH: Climb to 6500 direct IBEDE and hold, continue climb-in-hold to 6500.
<p>⚠ Helicopter visibility reduction below 1 SM NA. Straight-in Rwy 17 NA at night, Circling Rwy 12, 17, 30 NA at night. For uncompensated Baro-VNAV systems, LNAV/VNAV NA below -20°C or above 54°C.</p>	

AWOS-3 119.225	DENVER CENTER 132.7 226.675	UNICOM 122.8 (CTAF) 0
--------------------------	---------------------------------------	---------------------------------

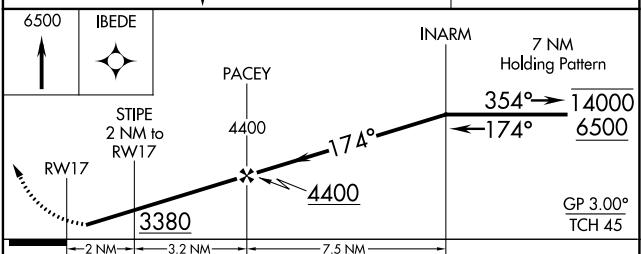
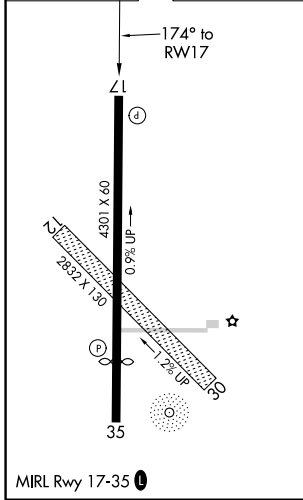


3547A

Λ 3227



ELEV 2707	D TDZE 2707
-----------	--------------------



CATEGORY	A	B	C	D
LPV DA	2957-1	250 (300-1)		NA
LNAV/VNAV DA	2957-1	250 (300-1)		NA
LNAV MDA	3020-1	313 (400-1)		NA
C CIRCLING	3160-1 453 (500-1)	3340-1 633 (700-1)	3340-1 3/4 633 (700-1 3/4)	NA

NC-2, 22 FEB 2024 to 21 MAR 2024

NC-2, 22 FEB 2024 to 21 MAR 2024