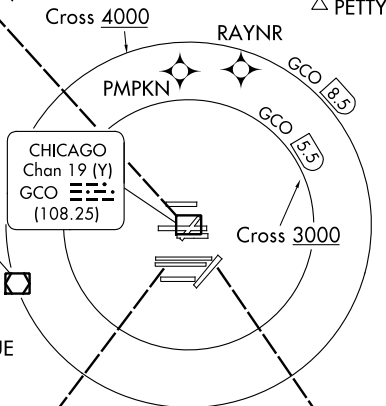


CLNC DEL
121.6
CPDLCNOTE: All turbo-jet departures
in all directions, maintain
250K until advised by
ATC.CHICAGO DEP CON
EAST/NORTH
125.0 337.4KEELER
116.6 ELX
Chan 113BADGER
116.4 BAE
Chan 111SPECIAL INSTRUCTIONS: For appropriate
departure control frequency, see graphic.
Use frequency depicted within the sector where
first navaid/fix for your route is located
(sectors indicated by dashed lines;
frequencies in dashed box within).TOP ALTITUDE:
5000

RADAR required.

CHICAGO DEP CON
WEST
126.625 327.075IOWA CITY
116.2 IOW
Chan 109DUPAGE
108.4 DPA
Chan 21

TAKEOFF MINIMUMS

Rwy 22R: NA - ATC.

Rwys 4L/R, 9L/C/R, 10L/C/R, 22L, 28C/R: Standard.

Rwy 27L/C: Standard with minimum climb of 220'
per NM to 1800.Rwy 27R: Standard with minimum climb of 220'
per NM to 1700.Rwy 28L: Standard with minimum climb of 210' per
NM to 900, or alternatively, with standard
takeoff minimums and a normal 200' per
NM climb gradient, takeoff must occur
no later than 1300' prior to DER.

NOTE: Chart not to scale.

(CONTINUED ON FOLLOWING PAGE)



DEPARTURE ROUTE DESCRIPTION

ALL AIRCRAFT: Expect RADAR vectors to first enroute navaid/fix.
Expect clearance to requested altitude/flight level ten minutes after departure.

ALL AIRCRAFT: Cross 5.5 DME arc of GCO DME at or above 3000, cross
8.5 DME arc of GCO DME at or above 4000, maintain 5000 or assigned altitude.
If unable to comply advise ATC as soon as possible prior to departure.

EC-3, 22 FEB 2024 to 21 MAR 2024

EC-3, 22 FEB 2024 to 21 MAR 2024