

(ANIAK2.ANIAK) 18312

# ANIAK TWO DEPARTURE (RNAV)

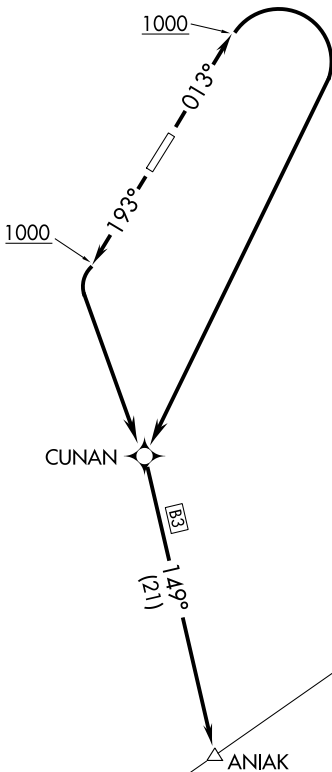
AL-9470 (FAA)

HOLY CROSS (HCA)(PAHC)

HOLY CROSS, ALASKA

**TOP ALTITUDE:  
ASSIGNED BY ATC**

ANCHORAGE CENTER  
118.15 251.05  
ASOS  
118.325  
CTAF  
122.8



AK, 25 JAN 2024 to 21 MAR 2024

AK, 25 JAN 2024 to 21 MAR 2024

V480 (1222)

V480 (1222)

**TAKEOFF MINIMUMS**  
Rwy 1, 19: Standard.

NOTE: RNAV 1.  
NOTE: GPS required.  
NOTE: Chart not to scale.



## DEPARTURE ROUTE DESCRIPTION

TAKEOFF RUNWAY 1: Climb heading 013° to 1000, then right turn direct CUNAN, then via depicted route, thence. . . .

TAKEOFF RUNWAY 19: Climb heading 193° to 1000, then direct CUNAN, then via depicted route, thence. . . .

. . . .maintain 3700 or as assigned by ATC.

# ANIAK TWO DEPARTURE (RNAV)

(ANIAK2.ANIAK) 21JUL16

HOLY CROSS, ALASKA  
HOLY CROSS (HCA)(PAHC)