


LOC/DME I-ECH 109.3 Chan 30	APP CRS 115°	Rwy Idg TDZE 7500 92	Apt Elev 92
--	------------------------	--	-----------------------

I LS Y or LOC Y RWY 11

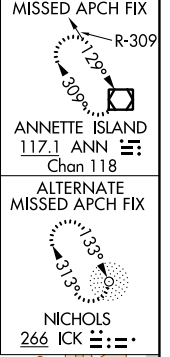
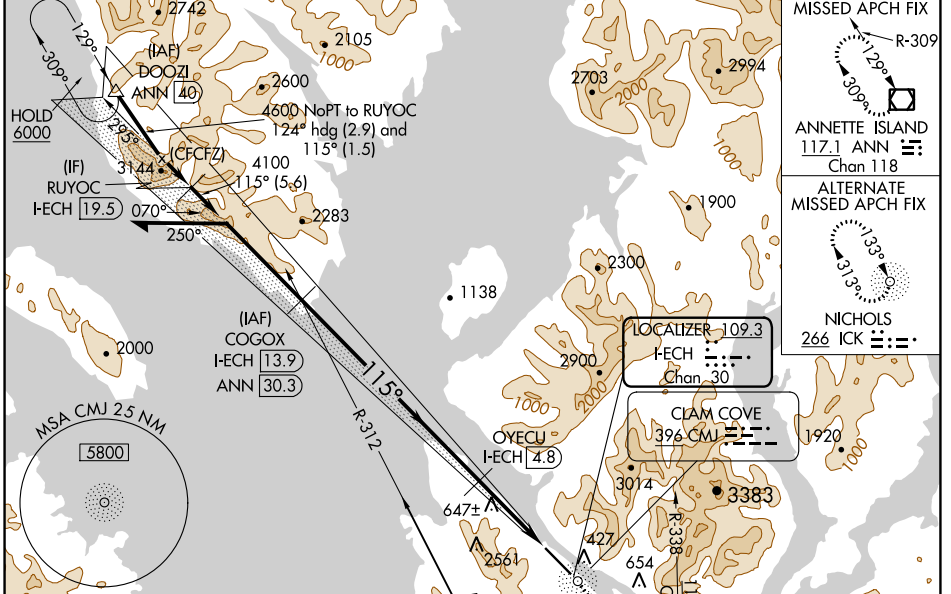
KETCHIKAN INTL (KTN)(PAKT)

⚠ DME and ADF required. For inop MALS, increase S-LS 11† visibility to RVR 6000 and S-LOC 11 Cats C and D visibility to 2½.
RVR 1800 authorized with the use of FD or AP or HUD to DA.

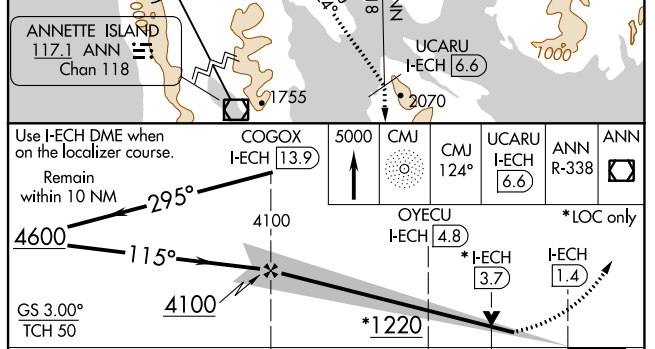
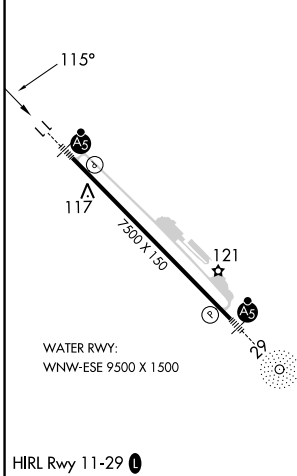
MALS 

MISSED APPROACH: Climb to 5000 direct CMJ NDB and on CMJ NDB bearing 124° to UCARU/I-ECH 6.6 DME and on ANN VOR/DME R-338 to ANN VOR/DME and hold.
S-LS 11 missed approach requires minimum climb of 305 feet per NM to 4000.
† S-LS 11 missed approach requires minimum climb of 270 feet per NM to 4000.
S-LOC 11 missed approach requires minimum climb of 235 feet per NM to 4000. If unable to meet climb gradients, see LOC X RWY 11.

AFIS 134.45	ANCHORAGE CENTER 118.5 284.6	KETCHIKAN RADIO 123.6 (CTAF)
-----------------------	--	--



ELEV 92	TDZE 92
---------	---------



CATEGORY	A	B	C	D
S-LS 11 #		292/24	200 (200-½)	
S-LS 11 †		481/45	389 (400-¾)	
S-LOC 11	880/24 788 (800-½)	880/40 788 (800-¾)	880-1¾	788 (800-1¾)

AK, 25 JAN 2024 to 21 MAR 2024


AK, 25 JAN 2024 to 21 MAR 2024

I LS Z or LOC Z RWY 11

KETCHIKAN INTL (KTN)(PAKT)

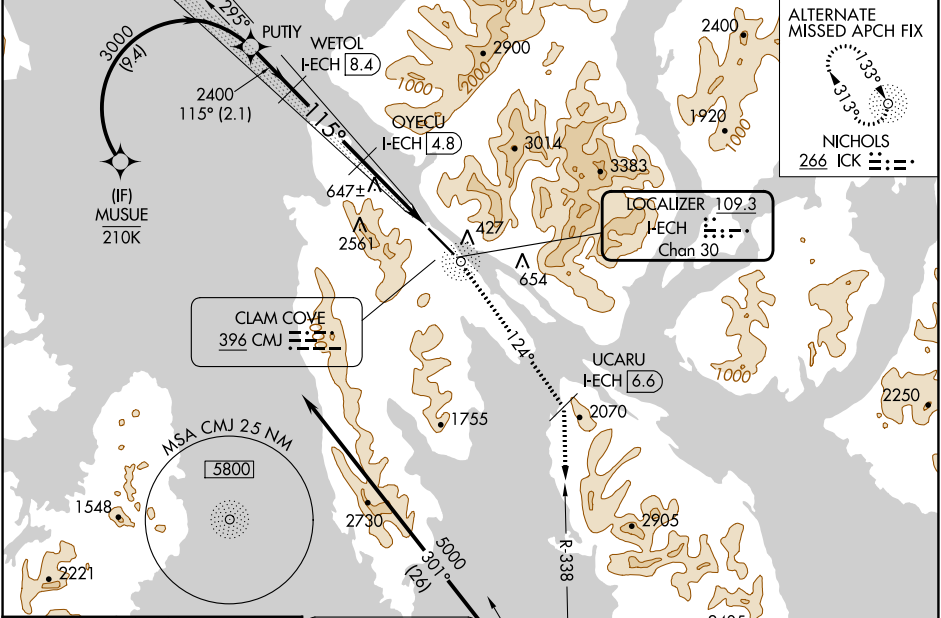
LOC/DME I-ECH 109.3 Chan 30	APP CRS 115°	Rwy Idg 7500 TDZE 92 Apt Elev 92
--	------------------------	---

⚠ RF, GPS, DME and ADF required. For inop MALSR, increase S-LOC 11 Cats C and D visibility to 2½. #RVR 1800 authorized with the use of FD or AP or HUD to DA.

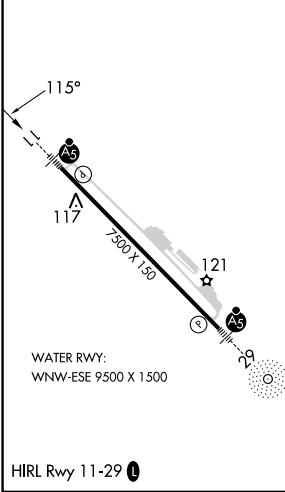
MALSR


MISSED APPROACH: Climb to 5000 direct CMJ NDB and on CMJ NDB bearing 124° to UCARU I-ECH 6.6 DME and on ANN VOR/DME R-338 to ANN VOR/DME and hold.
S-ILS 11 missed approach requires minimum climb of 305 feet per NM to 4000.
S-LOC 11 missed approach requires minimum climb of 235 feet per NM to 4000.
If unable to meet climb gradients, see LOC X RWY 11.

AFIS 134.45	ANCHORAGE CENTER 118.5 284.6	KETCHIKAN RADIO 123.6 (CTAF)
-----------------------	--	--



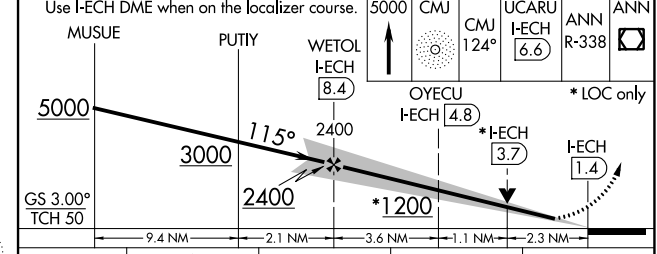
ELEV 92	TDZE 92
----------------	----------------



NICHOLS 266 ICK

Procedure NA for arrivals on ANN VOR/DME airway radials 290 CW 309.

IAF ANNETTE ISLAND 117.1 ANN Chan 118



CATEGORY	A	B	C	D
#S-ILS 11	292/24 200 (200-½)			
S-LOC 11	880/24 788 (800-½)	880/40 788 (800-¾)	880-1¼ 788 (800-1¼)	

AK, 25 JAN 2024 to 21 MAR 2024

AK, 25 JAN 2024 to 21 MAR 2024

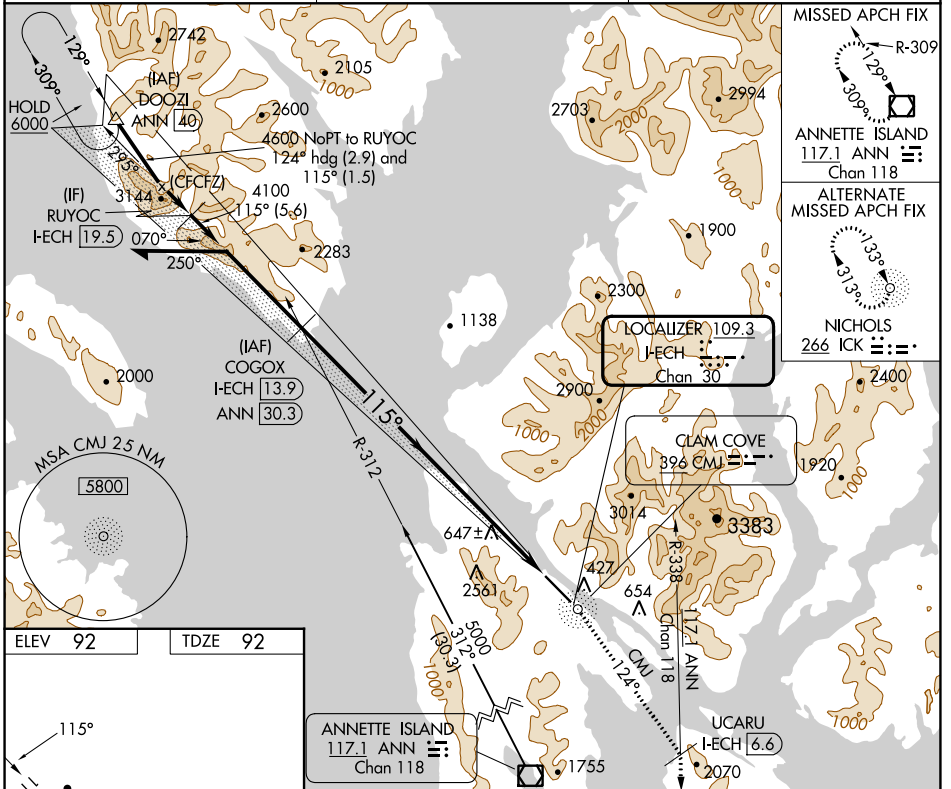
LOC/DME I-ECH 109.3 Chan 30	APP CRS 115°	Rwy Idg 7500 TDZE 92 Apt Elev 92
--	------------------------	---

LOC X RWY 11

KETCHIKAN INTL (KTN)(PAKT)

<p>Circling NA at night. Inoperative table does not apply. DME and ADF required.</p>	<p>MALSR</p>	<p>MISSED APPROACH: Climb to 5000 direct CMJ NDB then on CMJ NDB bearing 124° to UCARU/I-ECH 6.6 DME and on ANN VOR/DME R-338 to ANN VOR/DME and hold.</p>

AFIS 134.45	ANCHORAGE CENTER 118.5 284.6	KETCHIKAN RADIO 123.6 (CTAF) 0
--------------------	-------------------------------------	---------------------------------------



ELEV 92	TDZE 92
---------	---------

WATER RWY:
WNW-ESE 9500 X 1500

HIRL Rwy 11-29

Remain within 10 NM	COGOX I-ECH 13.9	5000 CMJ	UCARU I-ECH 6.6	ANN R-338	ANN
---------------------	------------------	----------	-----------------	-----------	-----

Use I-ECH DME when on the localizer course.

4600 → 295° → 4100 → 115° → 3000' TCH 50 → I-ECH 6.6 → I-ECH 1.4

Distances: 7.3 NM, 5.2 NM

CATEGORY	A	B	C	D
S-11	1780-1¼ 1688 (1700-1¼)	1780-1½ 1688 (1700-1½)	1780-3	1688 (1700-3)
CIRCLING	2100-1¼ 2008 (2100-1¼)	2640-1½ 2548 (2600-1½)	3020-3 2928 (3000-3)	3300-3 3208 (3300-3)

AK, 25 JAN 2024 to 21 MAR 2024

AK, 25 JAN 2024 to 21 MAR 2024

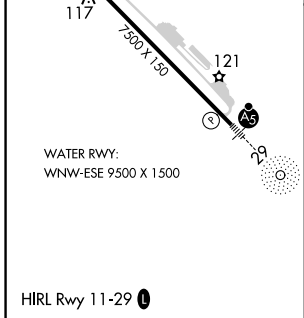
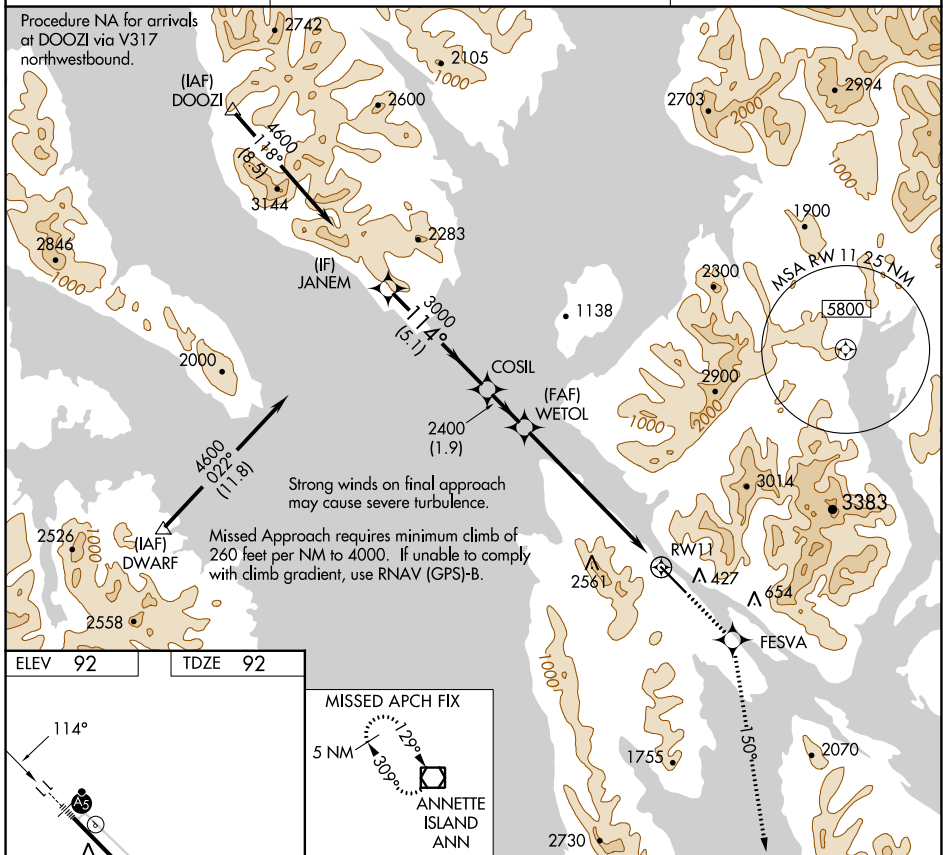
WAAS CH 58009 W11A	APP CRS 114°	Rwy Idg TDZE Apt Elev	7500 92 92
--	------------------------	-----------------------------	---------------------------------------

RNAV (GPS) RWY 11

KETCHIKAN INTL (KTN)(PAKT)

RNP APCH-GPS.		MALSRR	MISSED APPROACH: Climb to 5000 direct FESVA and on 150° track to ANN VOR/DME and hold.
▼ ▲ NA	For inoperative ALS, increase LPV DA visibility to RVR 6000.	AS	

AFIS 134.45	ANCHORAGE CENTER 118.5 284.6	KETCHIKAN RADIO 123.6 (CTAF) 0
-----------------------	--	--



Procedure Turn NA	JANEM	COSIL	WETOL	5000	FESVA	150° tr	ANN
	4600	3000	2400	↑	◆	□	□
GP 3.00° TCH 50	5.1 NM		1.9 NM	6.8 NM		RWY 11	
CATEGORY	A	B	C	D			
LPV DA	442/40			350 (400-3/4)		NA	

AK, 25 JAN 2024 to 21 MAR 2024

AK, 25 JAN 2024 to 21 MAR 2024

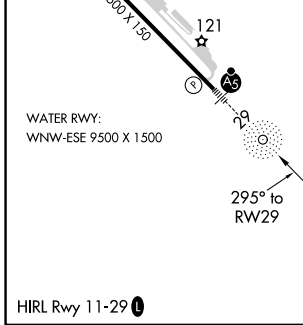
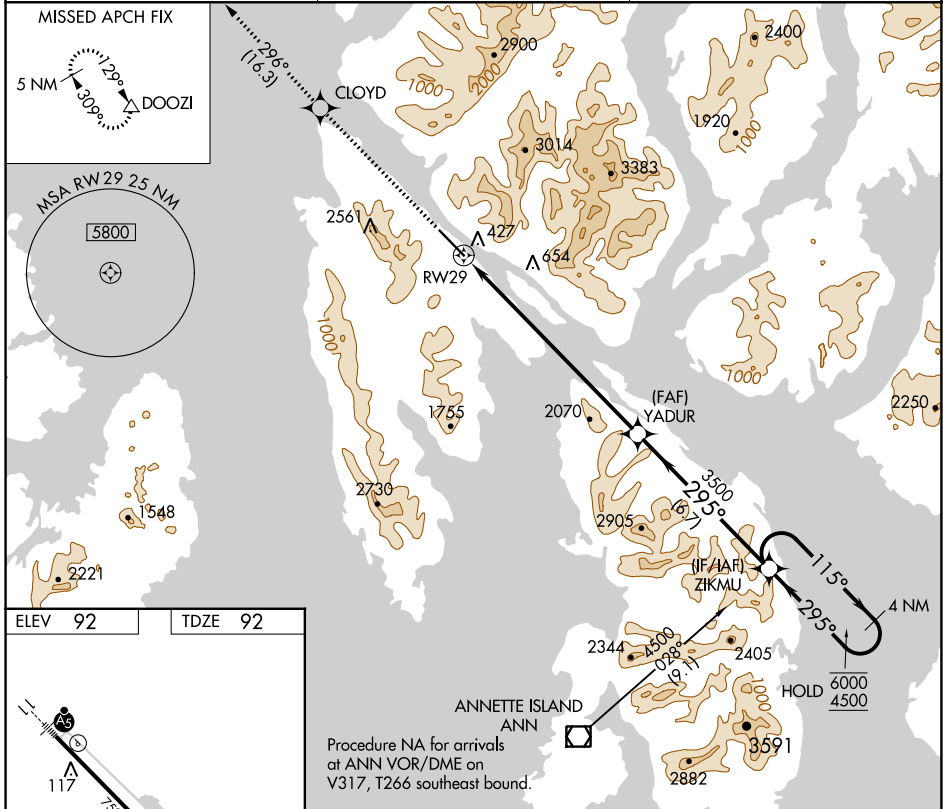
WAAS CH 40142 W29A	APP CRS 295°	Rwy Idg TDZE Apt Elev	7500 92 92
--	------------------------	-----------------------------	---------------------------------------

RNAV (GPS) RWY 29

KETCHIKAN INTL (KTN)(PAKT)

RNP APCH.	MALS R	MISSED APPROACH: Climb to 5000 direct CLOYD and on track 296° to DOOZI and hold. *Missed approach requires minimum climb of 425 feet per NM to 2160; If unable to meet climb gradient, see RNAV (GPS)-B.
▼ ▲ NA For inop ALS, increase all Cats visibility to 1¼ SM.	AS	

AFIS 134.45	ANCHORAGE CENTER 118.5 284.6	KETCHIKAN RADIO 123.6 (CTAF) 0
-----------------------	--	--



5000	CLOYD	tr 296°	DOOZI	VGSI and RNAV glidepath not coincident (VGSI Angle 3.00/TCH 49).	4 NM Holding Pattern
↑	✦		△		ZIKMU
					YADUR
					115° → 6000
					← 295° 4500
					GP 3.55°
					TCH 50
					8.9 NM
					6.7 NM

CATEGORY	A	B	C	D
LPV DA*	722-1¾ 630 (700-1¾)			NA

AK, 25 JAN 2024 to 21 MAR 2024

AK, 25 JAN 2024 to 21 MAR 2024

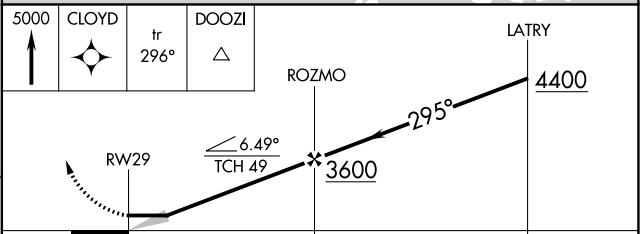
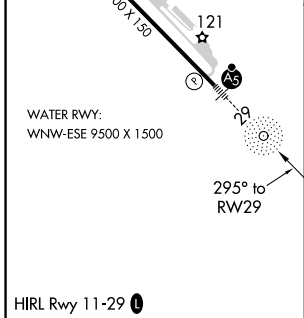
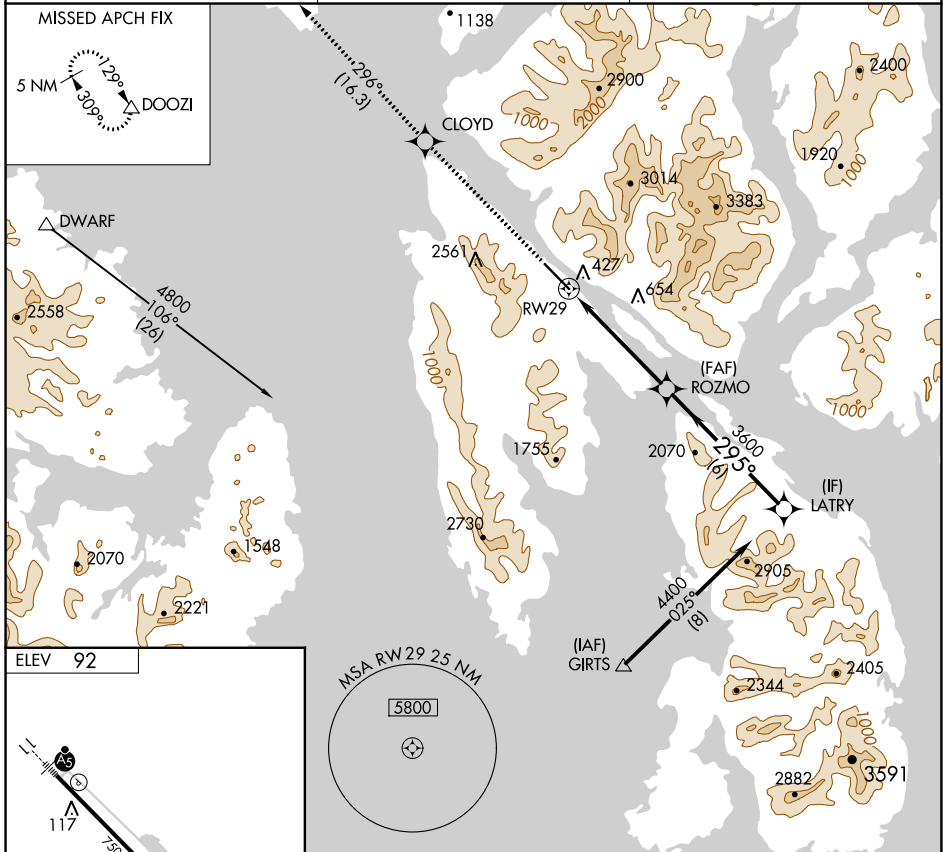
APP CRS 295°	Rwy Idg TDZE Apt Elev	N/A N/A 92
------------------------	-----------------------------	---------------------------------------

RNAV (GPS)-B

KETCHIKAN INTL (KTN)(PAKT)

RNP APCH. ▼ ▲ Circling NA northeast of Rwy 29-11.	MISSED APPROACH: Climb to 5000 direct CLOYD and on track 296° to DOOZI and hold.
--	--

AFIS 134.45	ANCHORAGE CENTER 118.5 284.6	KETCHIKAN RADIO 123.6 (CTAF) 0
-----------------------	--	--



CATEGORY	A	B	C	D
▲ CIRCLING	1980-1¼ 1888 (1900-1¼)	2620-1½ 2528 (2600-1½)	2880-3	2788 (2800-3)

AK, 25 JAN 2024 to 21 MAR 2024

AK, 25 JAN 2024 to 21 MAR 2024