

WAAS CH <b>53315</b> <b>W21A</b>	APP CRS <b>209°</b>	Rwy Idg TDZE Apt Elev	<b>3986</b> <b>175</b> <b>181</b>
--	------------------------	-----------------------------	---

# RNAV (GPS) RWY 21

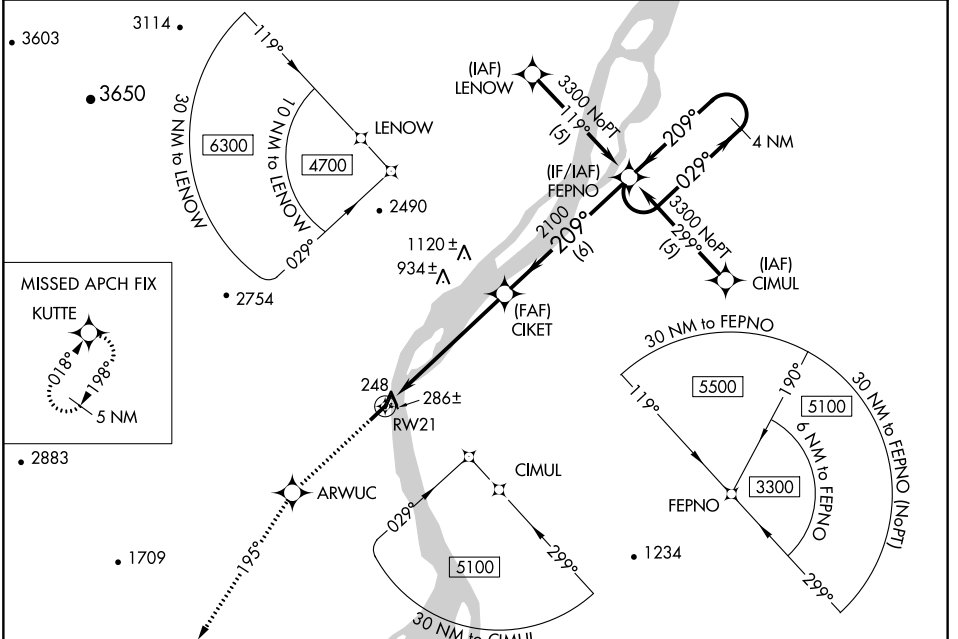
KALTAG (KAL)(PAKV)

RNP APCH-GPS.

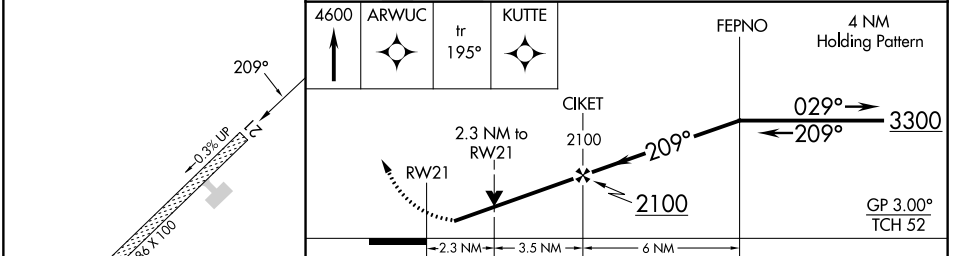
**⚠** For uncompensated Baro-VNAV systems, LNAV/VNAV NA below -25°C or above 54°C. Helicopter visibility reduction below ¾ SM NA. Circling Rwy 3 NA at night.

**⚠** MISSED APPROACH: Climb to 4600 direct ARWUC and via track 195° to KUTTE and hold, continue climb-in-hold to 4600.

AWOS-3 <b>135.25</b>	ANCHORAGE CENTER <b>127.0 290.2</b>	CTAF <b>122.9</b>
-------------------------	--	----------------------



ELEV 181	TDZE 175
----------	----------



CATEGORY	A	B	C	D
LPV DA	493-1 318 (400-1)			NA
LNAV/VNAV DA	598-1½ 423 (500-1½)			NA
LNAV MDA	960-1 785 (800-1)	960-1¼ 785 (800-1¼)	960-2¼ 785 (800-2¼)	NA
CIRCLING	960-1 779 (800-1)	960-1¼ 779 (800-1¼)	1200-3 1019 (1100-3)	NA

AK, 25 JAN 2024 to 21 MAR 2024

AK, 25 JAN 2024 to 21 MAR 2024

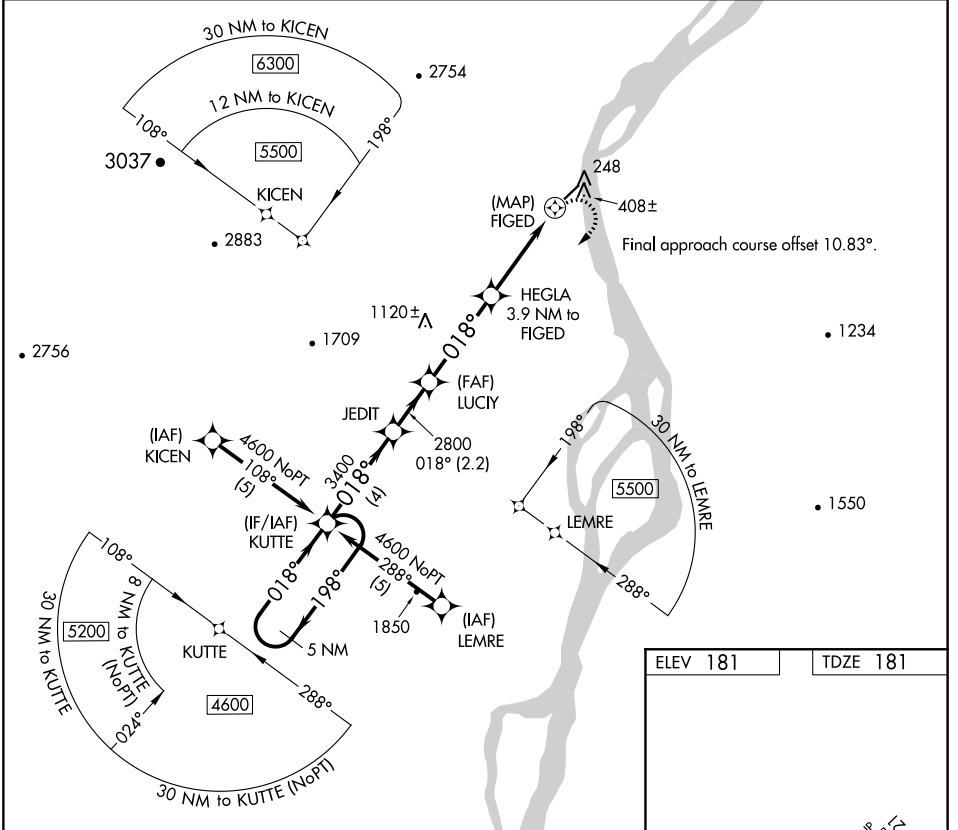
APP CRS	Rwy Idg	<b>3986</b>
<b>018°</b>	TDZE	<b>181</b>
	Apt Elev	<b>181</b>

# RNAV (GPS) RWY 3

KALTAG (KAL)(PAKV)

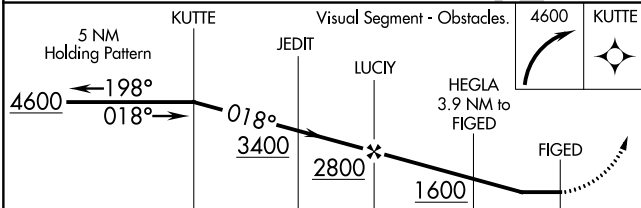
DME/DME RNP-0.3 NA. Helicopter visibility reduction below 1 SM NA. Night Landing: Rwy 3 NA.	MISSED APPROACH: Climbing right turn to 4600 direct KUTTE and hold.
---	---

AWOS-3 <b>135.25</b>	ANCHORAGE CENTER <b>127.0 290.2</b>	CTAF <b>122.9 0</b>
-------------------------	--	------------------------



AK, 25 JAN 2024 to 21 MAR 2024

AK, 25 JAN 2024 to 21 MAR 2024



ELEV 181	TDZE 181
----------	----------

CATEGORY	A	B	C	D
LNVA MDA	1280-1¼ 1099 (1100-1¼)	1280-1½ 1099 (1100-1½)	1280-3 1099 (1100-3)	NA
CIRCLING	1280-1¼ 1099 (1100-1¼)	1280-1½ 1099 (1100-1½)	1280-3 1099 (1100-3)	NA

MIRL Rwy 3-21 0