

APP CRS	Rwy ldg	3300
204°	TDZE	107
	Apt Elev	107

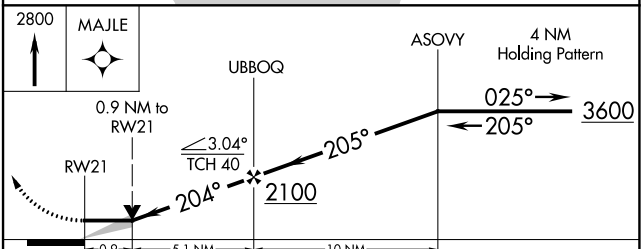
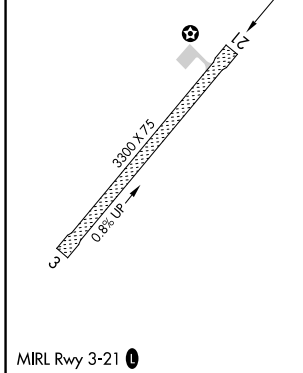
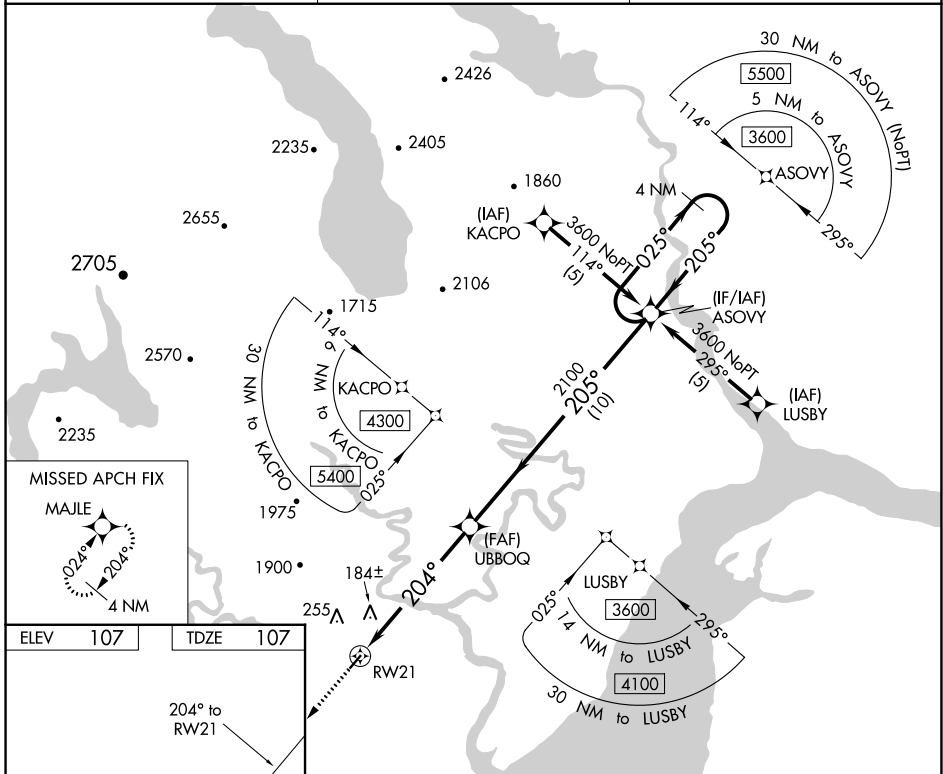
RNAV (GPS) RWY 21

MANOKOTAK (MBA) (PAMB)

⚠ Circling NA northwest of Rwy 3 and 21. DME/DME RNP-0.3 NA. VDP NA when using Dillingham altimeter setting. When local altimeter setting not received use Dillingham altimeter setting and increase all MDA 40 feet and increase LNAV Cat D visibility ¼ SM. Rwy 21 helicopter visibility below 1 SM NA.

⚠ MISSED APPROACH: Climb to 2800 direct MAJLE and hold.

AWOS-3P 120.625	ANCHORAGE CENTER 132.75 282.35	CTAF 122.9
---------------------------	--	----------------------



CATEGORY	A	B	C	D
LNAV MDA	440-1 333 (400-1)			
C CIRCLING	540-1 433 (500-1)	560-1 453 (500-1)	560-1½ 453 (500-1½)	660-2 553 (600-2)

AK, 25 JAN 2024 to 21 MAR 2024

AK, 25 JAN 2024 to 21 MAR 2024

RNAV (GPS) RWY 3

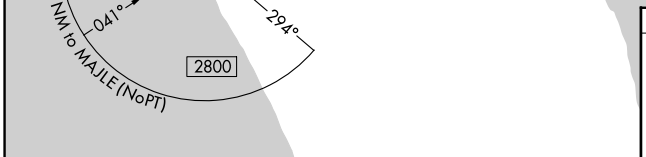
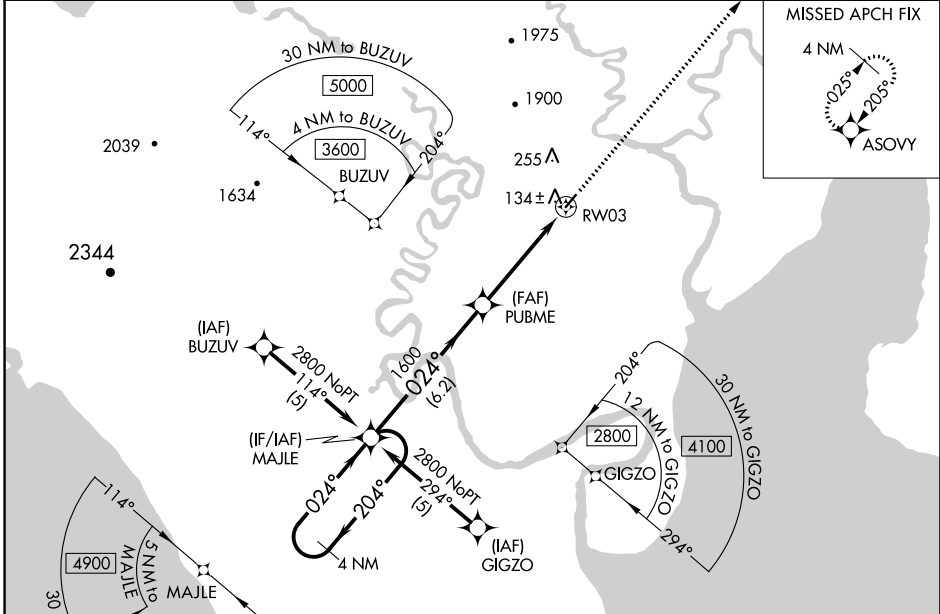
MANOKOTAK (MBA) (PAMB)

APP CRS 024°	Rwy Idg 3300
	TDZE 105
	Apt Elev 107

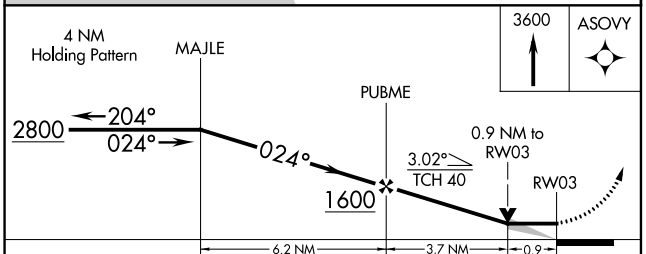
⚠ Circling NA northwest of Rwy 3 and 21. DME/DME RNP-0.3 NA. VDP NA when using Dillingham altimeter setting. When local altimeter setting not received use Dillingham altimeter setting and increase all MDA 40 feet and LNAV Cat D visibility ¼ SM. Rwy 3 helicopter visibility below 1 SM NA.

⚠ MISSED APPROACH: Climb to 3600 direct ASOVY and hold.

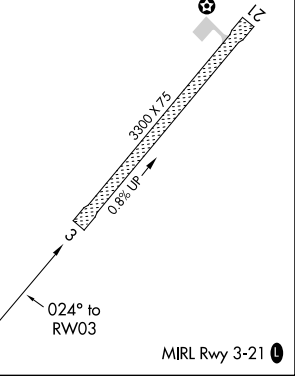
AWOS-3P 120.625	ANCHORAGE CENTER 132.75 282.35	CTAF 122.9
---------------------------	--	----------------------



ELEV 107	TDZE 105
----------	----------



CATEGORY	A	B	C	D
LNAV MDA	400-1 295 (300-1)			
C CIRCLING	540-1 433 (500-1)	560-1 453 (500-1)	560-1½ 453 (500-1½)	660-2 553 (600-2)



AK, 25 JAN 2024 to 21 MAR 2024

AK, 25 JAN 2024 to 21 MAR 2024