

APP CRS	Rwy Idg	<b>4003</b>
<b>265°</b>	TDZE	<b>10</b>
	Apt Elev	<b>14</b>

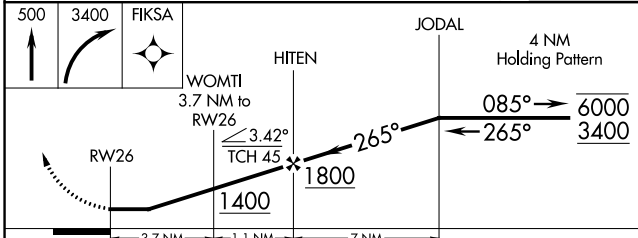
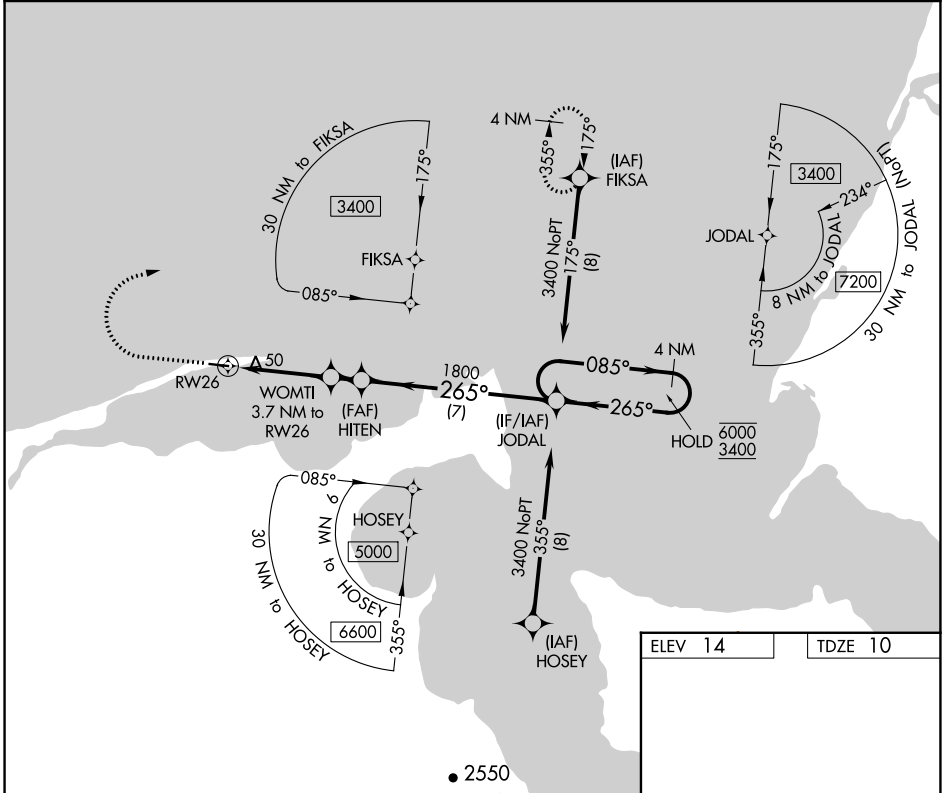
# RNAV (GPS) RWY 26

NELSON LAGOON (OUL) (PAOU)

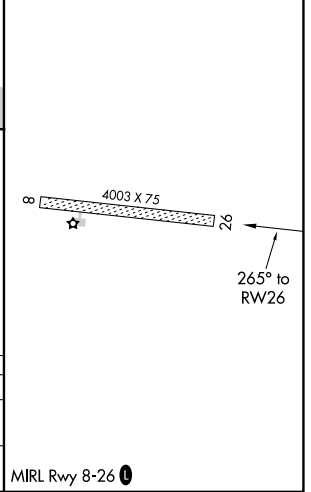
RNP APCH.  
 Procedure NA at night.  
 Rwy 26 helicopter visibility reduction below 1 SM NA.

MISSED APPROACH: Climb to 500, then climbing right turn to 3400 direct FIKSA and hold. Continue climb in hold to 3400.

AWOS-3P <b>119,025</b>	ANCHORAGE CENTER <b>118.5 278.3</b>	CTAF <b>122.90</b>
---------------------------	--	-----------------------



ELEV 14	TDZE 10
---------	---------



CATEGORY	A	B	C	D
RNAV MDA	300-1 290 (300-1)			
CIRCLING	520-1	506 (600-1)	520-1½ 506 (600-1½)	580-2 566 (600-2)

AK, 25 JAN 2024 to 21 MAR 2024

AK, 25 JAN 2024 to 21 MAR 2024

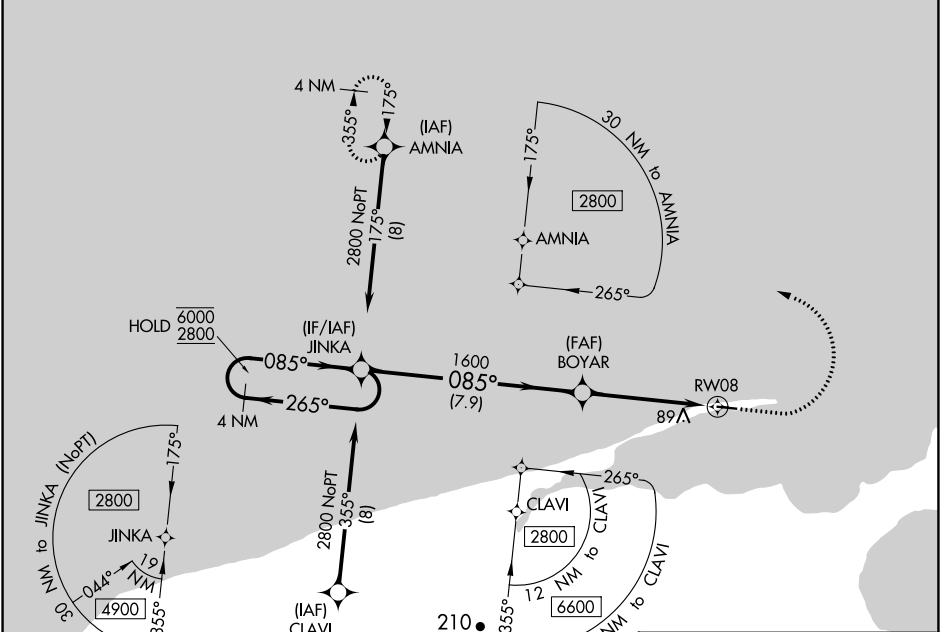
APP CRS	Rwy Idg	<b>4003</b>
<b>085°</b>	TDZE	<b>14</b>
	Apt Elev	<b>14</b>

# RNAV (GPS) RWY 8

NELSON LAGOON (OUL) (PAOU)

RNP APCH.	MISSED APPROACH: Climb to 500, then climbing left turn to 3000 direct AMNIA and hold.
▼ Procedure NA at night. Rwy 8 helicopter visibility reduction below 1 SM NA.	

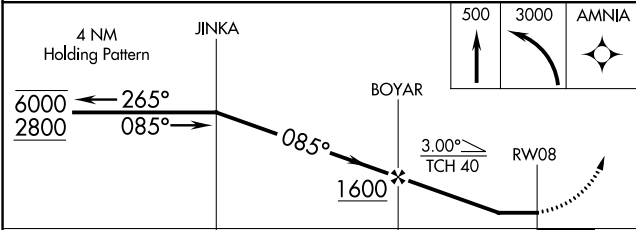
AWOS-3P <b>119.025</b>	ANCHORAGE CENTER <b>118.5 278.3</b>	CTAF <b>122.90</b>
---------------------------	--	-----------------------



AK, 25 JAN 2024 to 21 MAR 2024

AK, 25 JAN 2024 to 21 MAR 2024

ELEV 14	TDZE 14
---------	---------



ELEV 14	TDZE 14
MIRL Rwy 8-26	

CATEGORY	A	B	C	D
RNAV MDA	380-1 366 (400-1)			
CIRCLING	380-1 366 (400-1)	480-1 466 (500-1)	480-1½ 466 (500-1½)	580-2 566 (600-2)