

LOC/DME I-SIT	APP CRS	Rwy Idg	6500
108.9	116°	TDZE	24
Chan 26		Apt Elev	27

LDA RWY 11

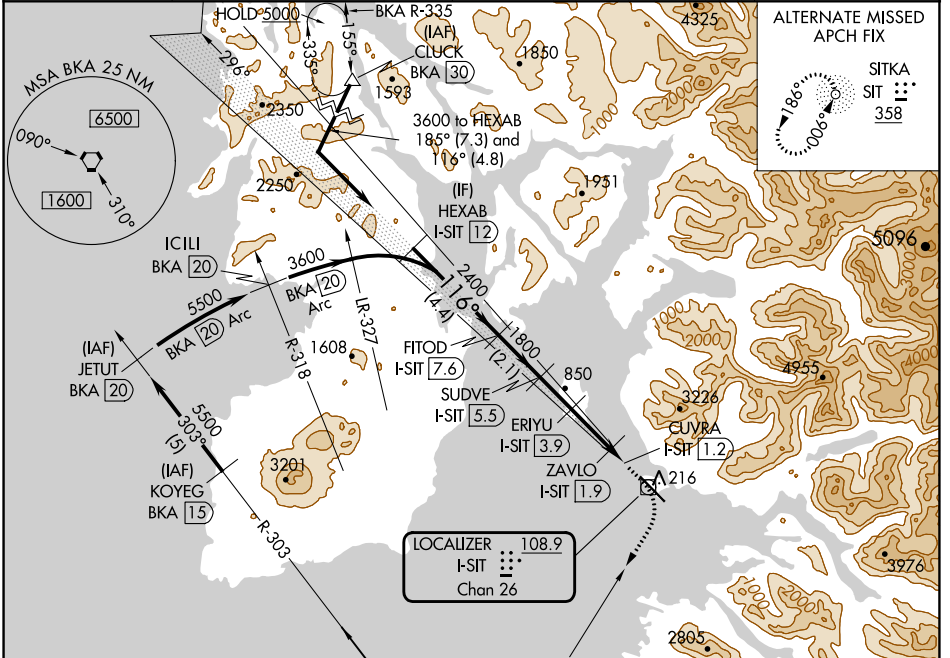
SITKA ROCKY GUTIERREZ (SIT)(PASI)

DME required.

⚠ Circling NA northeast of Rwy 11-29.
⚠ When local altimeter setting not received, procedure NA.

MISSED APPROACH: Climb to 600 then climbing right turn to 5500 on heading 192° and BKA VORTAC R-012 to BKA VORTAC and hold, continue climb-in-hold to 5500.

AFIS	ANCHORAGE CENTER	SITKA RADIO	UNICOM
135.9	126.1 335.5	123.6 (CTAF) 0 122.2	122.95



ALTERNATE MISSED APCH FIX

SITKA SIT 358

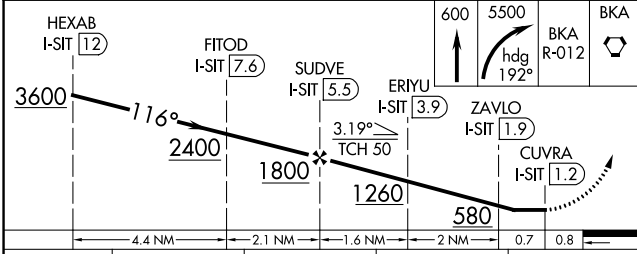
MISSED APCH FIX

Procedure NA for arrival on BKA Vortac airway radial 347.

BIORKA ISLAND 113.8 BKA Chan 85

SITKA 358 SIT

ELEV 27	TDZE 24
---------	---------



116°

730 x 1.50

REIL Rwy 11 and 29

HIRL Rwy 11-29

CATEGORY	A	B	C	D
S-11	520-1 496 (500-1)		520-1 3/8 496 (500-1 3/8)	
CIRCLING	520-1 493 (500-1)		540-1 1/2 513 (600-1 1/2)	1500-3 1473 (1500-3)

AK, 25 JAN 2024 to 21 MAR 2024

AK, 25 JAN 2024 to 21 MAR 2024

WAAS CH 56632	APP CRS 115°	Rwy Idg TDZE	6500 24
W11A		Apt Elev	27

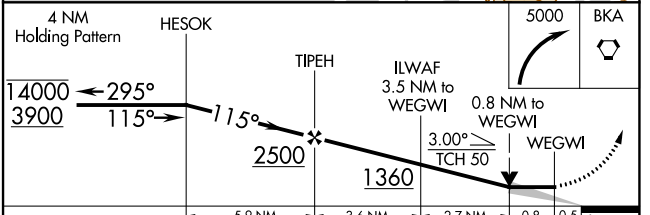
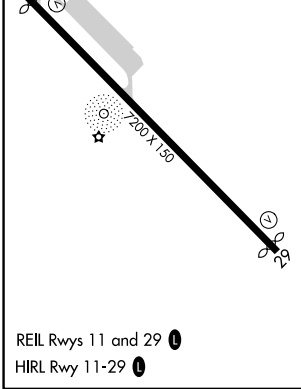
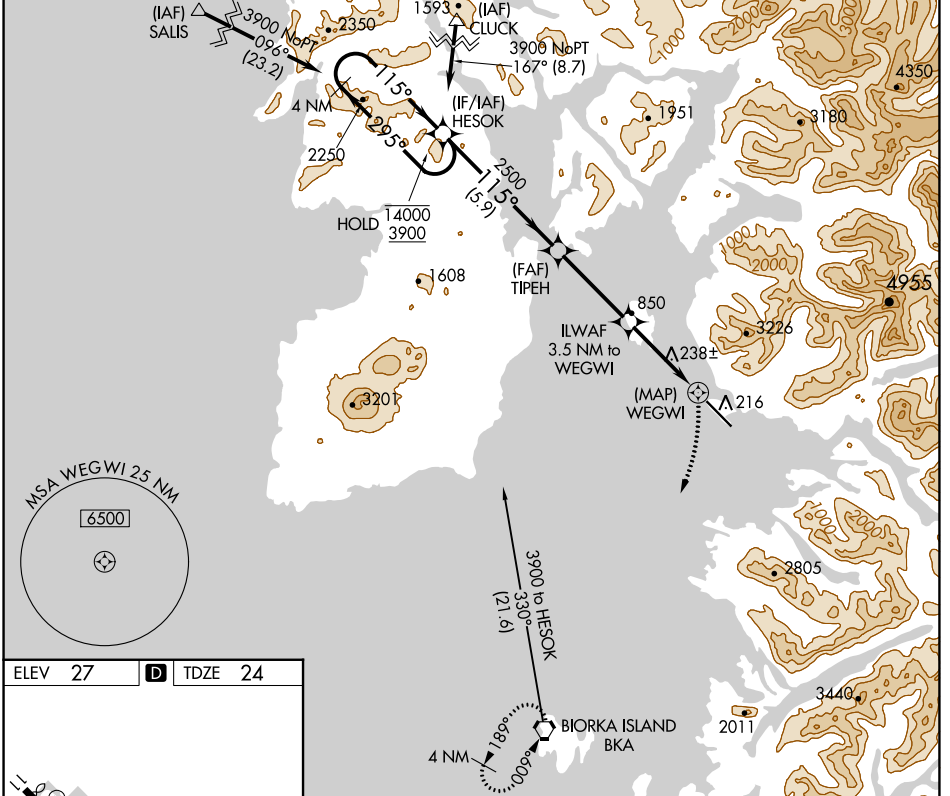
RNAV (GPS) RWY 11

SITKA ROCKY GUTIERREZ (SIT)(PASI)

RNP APCH.
 ▼ When local altimeter setting not received, procedure NA.
 ▲ Circling NA northeast of Rwy 11-29.

MISSED APPROACH: Climbing right turn to 5000 direct BKA VORTAC and hold, continue climb-in-hold to 5000.

AFIS 135.9	ANCHORAGE CENTER 126.1 335.5	SITKA RADIO 123.6 (CTAF) 122.2	UNICOM 122.95
----------------------	--	--	-------------------------



CATEGORY	A	B	C	D
LP MDA	500-1	476 (500-1)	500-1 $\frac{3}{8}$	476 (500-1 $\frac{1}{8}$)
LNAV MDA	1300-1 $\frac{1}{4}$ 1276 (1300-1 $\frac{1}{4}$)	1300-1 $\frac{1}{2}$ 1276 (1300-1 $\frac{1}{2}$)	1300-3	1276 (1300-3)
CIRCLING	1300-1 $\frac{1}{4}$ 1273 (1300-1 $\frac{1}{4}$)	1300-1 $\frac{1}{2}$ 1273 (1300-1 $\frac{1}{2}$)	1300-3 1273 (1300-3)	1660-3 1633 (1700-3)

AK, 25 JAN 2024 to 21 MAR 2024

AK, 25 JAN 2024 to 21 MAR 2024

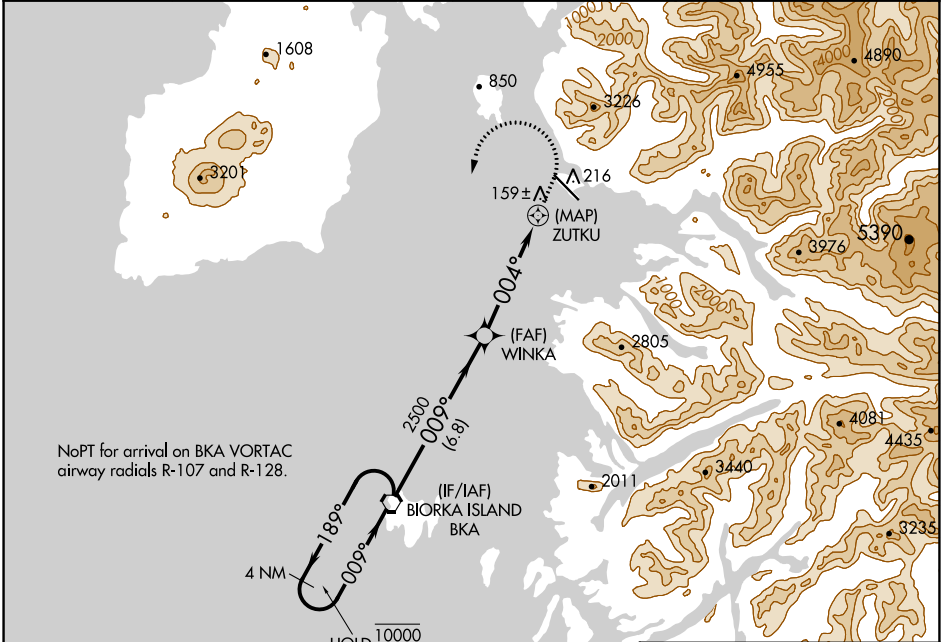
APP CRS 004°	Rwy Idg TDZE Apt Elev	N/A N/A 27
------------------------	-----------------------------	---------------------------------------

RNAV (GPS)-B

SITKA ROCKY GUTIERREZ (SIT)(PASI)

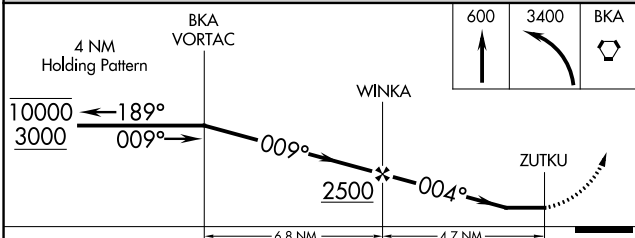
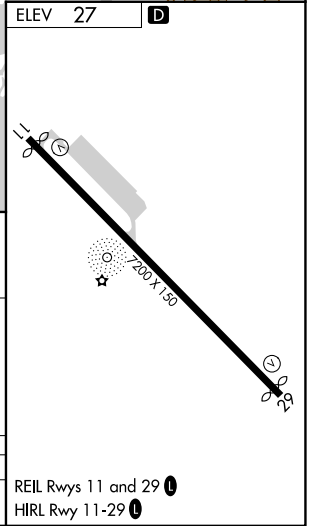
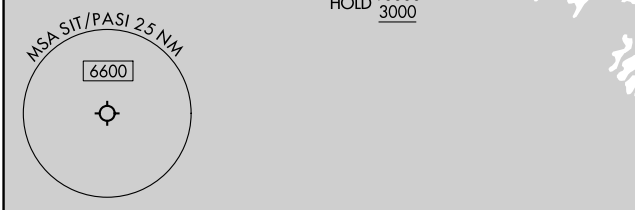
RNP APCH - GPS.	MISSED APPROACH: (Do not exceed 200K until BKA VORTAC) Climb to 600 then climbing left turn to 3400 direct BKA VORTAC and hold, continue climb-in-hold to 3400.
-----------------	--

AFIS 135.9	ANCHORAGE CENTER 126.1 335.5	SITKA RADIO 123.6 (CTAF) 122.2	UNICOM 122.95
----------------------	--	--	-------------------------



AK, 25 JAN 2024 to 21 MAR 2024

AK, 25 JAN 2024 to 21 MAR 2024



CATEGORY	A	B	C	D
CIRCLING	520-1¾	493 (500-1¾)	1220-3 1193 (1200-3)	1620-3 1593 (1600-3)

REIL Rwy 11 and 29 **1**
HIRL Rwy 11-29 **1**