

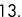
20086

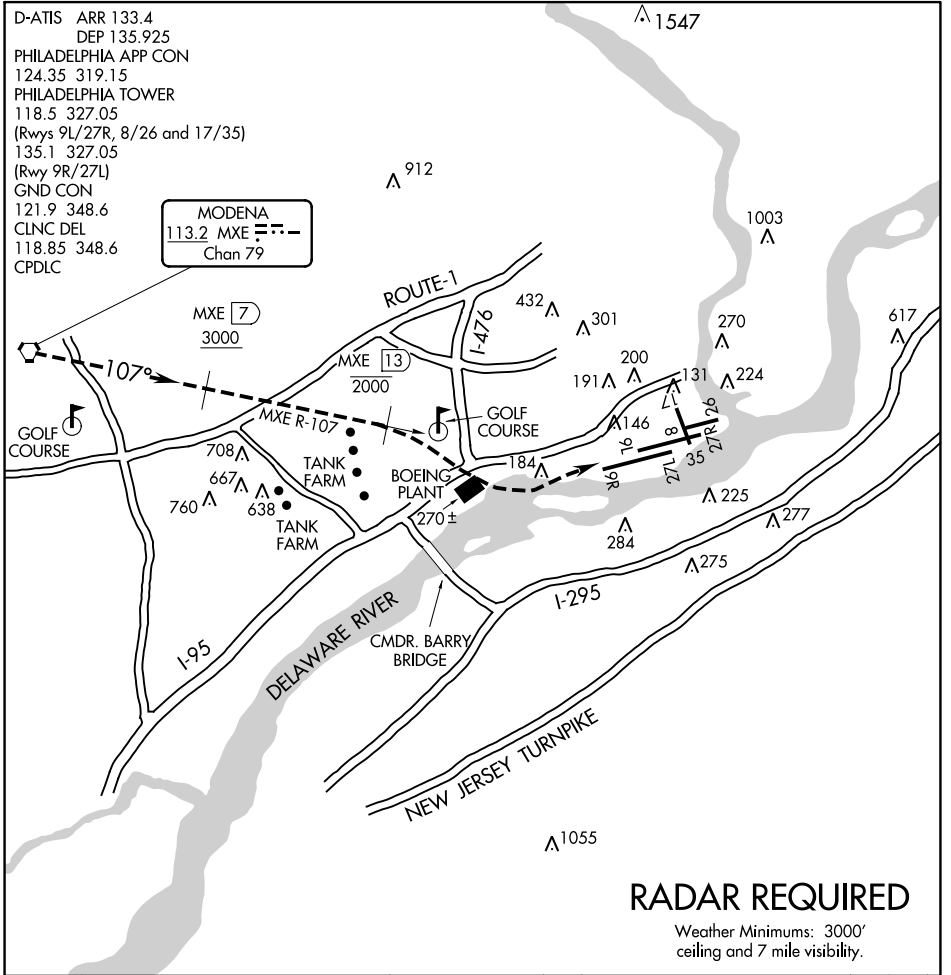
FREEDOM VISUAL RWY 9L

AL-320 (FAA)

PHILADELPHIA INTL (PHL)
PHILADELPHIA, PENNSYLVANIA

D-ATIS ARR 133.4
 DEP 135.925
 PHILADELPHIA APP CON
 124.35 319.15
 PHILADELPHIA TOWER
 118.5 327.05
 (Rwys 9L/27R, 8/26 and 17/35)
 135.1 327.05
 (Rwy 9R/27L)
 GND CON
 121.9 348.6
 CLNC DEL
 118.85 348.6
 CPDLC

MODENA
 113.2 MXE 
 Chan 79



NE-4, 22 FEB 2024 to 21 MAR 2024

NE-4, 22 FEB 2024 to 21 MAR 2024

1	2	3	4	5	6	7	8	9	10	11	12	13	14	15	16	17	18	19	20	21	22	23
---	---	---	---	---	---	---	---	---	----	----	----	----	----	----	----	----	----	----	----	----	----	----

FREEDOM VISUAL RWY 9L

Expect radar vectors to the MXE R-107.

Proceed Southeast on the MXE R-107 inbound for Rwy 9L.

Report the airport in sight to final controller.

Aircraft must remain on the MXE R-107 until the MXE R-107/13 DME;
then proceed visually to Rwy 9L or as assigned by the tower.

Expect aircraft to be utilizing a simultaneous visual or ILS approach
to Rwy 9R during this operation.

FREEDOM VISUAL RWY 9L

Orig 25MAR99

39°52'N-75°14'W

PHILADELPHIA, PENNSYLVANIA
PHILADELPHIA INTL (PHL)