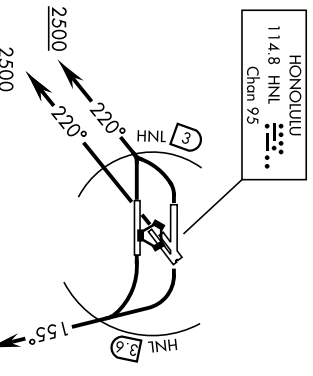


D-ATIS
 127.9 251.115
 CLNC DEL
 121.4 281.4
 GND.CON
 121.9 348.6
HONOLULU TOWER
 118.1 257.8
 HCF APP
 118.3 317.6
 N119.1 265.0
 W118.3 269.0



Departure from Rwy 8L/R:
 Right turn to heading 155° must be completed within 2 NM of departure end of rwy (HNL VORTAC 3.6 DME).
 Departure from Rwy 26L/R:
 Left turn to heading 220° must be completed within 2 NM of departure end of rwy (HNL VORTAC 3 DME).
CAUTION: Large ships operating in channel waters surrounding HNL airport.

TAKEOFF MINIMUMS

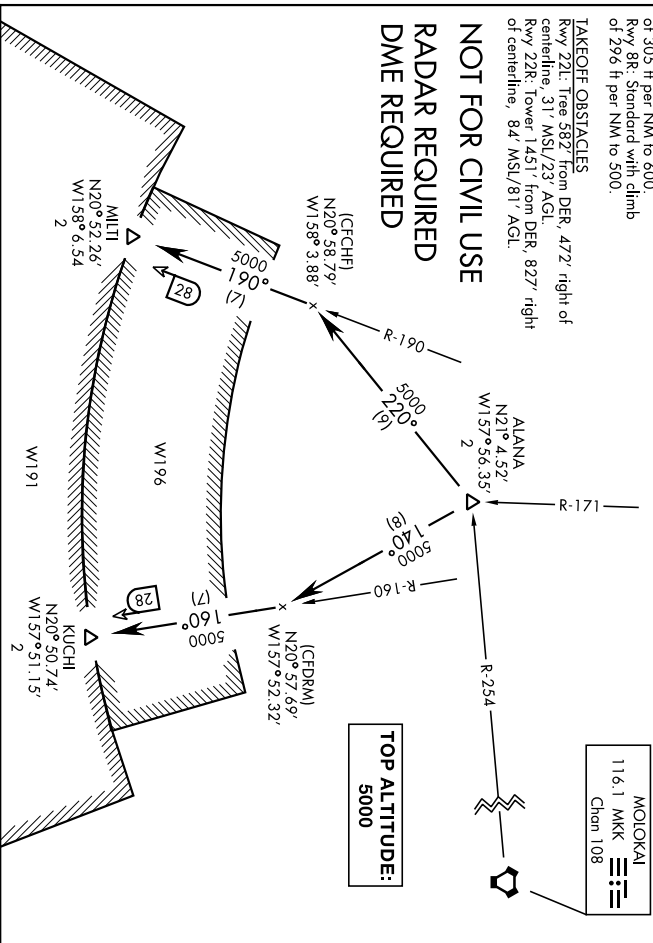
Rwy 4L/R: NA - Obstacles/Noise.
 Rwy 22L/R, 26L/R: Standard.
 Rwy 8L: Standard with minimum climb of 305 ft per NM to 600.
 Rwy 8R: Standard with climb of 296 ft per NM to 500.

TAKEOFF OBSTACLES

Rwy 22L: Tree 582' from DER, 472' right of centerline, 31' MSL/23' AGL.
 Rwy 22R: Tower 1451' from DER, 822' right of centerline, 84' MSL/81' AGL.

NOT FOR CIVIL USE

**RADAR REQUIRED
 DME REQUIRED**



MOLOKAI
 116.1 MKK
 Chan 108

TOP ALTITUDE:
 5000

DEPARTURE ROUTE DESCRIPTION

TAKE-OFF Rwy 8 L/R: Climbing right turn heading 155° to 2500. Thence...
TAKE-OFF Rwy 22 L/R: Climb heading 220° to 2500. Thence...
TAKE-OFF Rwy 26 L/R: Climbing left turn heading 220° to 2500. Thence...
 ... expect RADAR vectors to ALANA, then on assigned transition. Maintain 5000, expect clearance to enroute altitude at ALANA.

KUCCHI TRANSITION (ALANA2•KUCCHI): From over ALANA on heading 140° and HNL R-160 to KUCHI.
MULTI TRANSITION (ALANA2•MULTI): From over ALANA on heading 220° and HNL R-190 to MILTI.

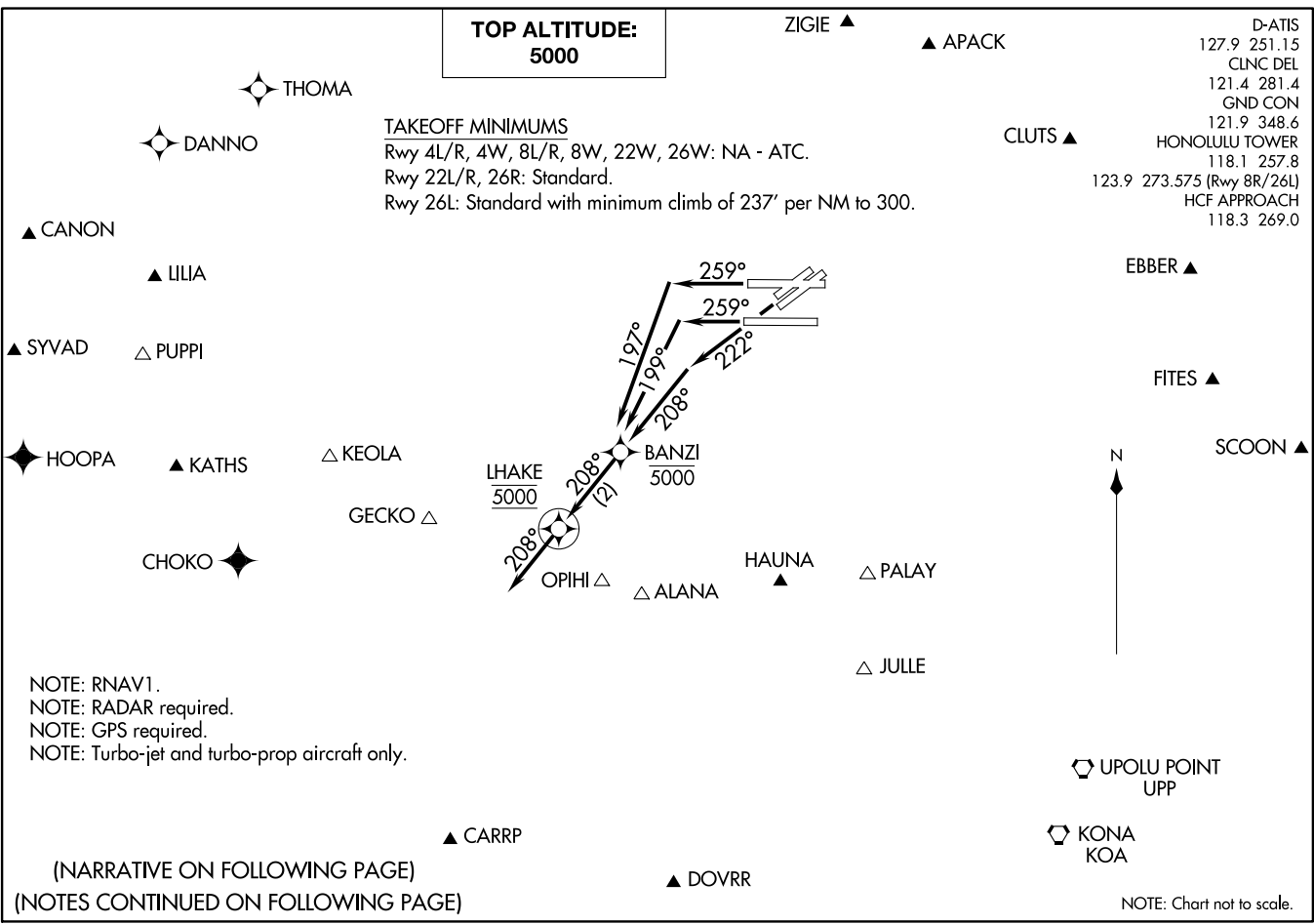
**TOP ALTITUDE:
5000**

TAKEOFF MINIMUMS
Rwy 4L/R, 4W, 8L/R, 8W, 22W, 26W: NA - ATC.
Rwy 22L/R, 26R: Standard.
Rwy 26L: Standard with minimum climb of 237' per NM to 300.

D-ATIS
127.9 251.15
CLNC DEL
121.4 281.4
GND CON
121.9 348.6
HONOLULU TOWER
118.1 257.8
123.9 273.575 (Rwy 8R/26L)
HCF APPROACH
118.3 269.0

BANZI ONE DEPARTURE (RNAV)
(BANZI1, BANZI) 300ANZ0
DANIEL K INOUYE INTL (HNL) (PHNL)
HONOLULU, HAWAII

BANZI ONE DEPARTURE (RNAV)
(BANZI1, BANZI) 20030
AL-754 (FAA)
DANIEL K INOUYE INTL (HNL) (PHNL)
HONOLULU, HAWAII



NOTE: RNAV1.
NOTE: RADAR required.
NOTE: GPS required.
NOTE: Turbo-jet and turbo-prop aircraft only.

(NARRATIVE ON FOLLOWING PAGE)
(NOTES CONTINUED ON FOLLOWING PAGE)



DEPARTURE ROUTE DESCRIPTION

TAKEOFF RUNWAYS 22L/R: Climb on heading 222° to intercept course 208° to cross BANZI at or below 5000, thence . . .

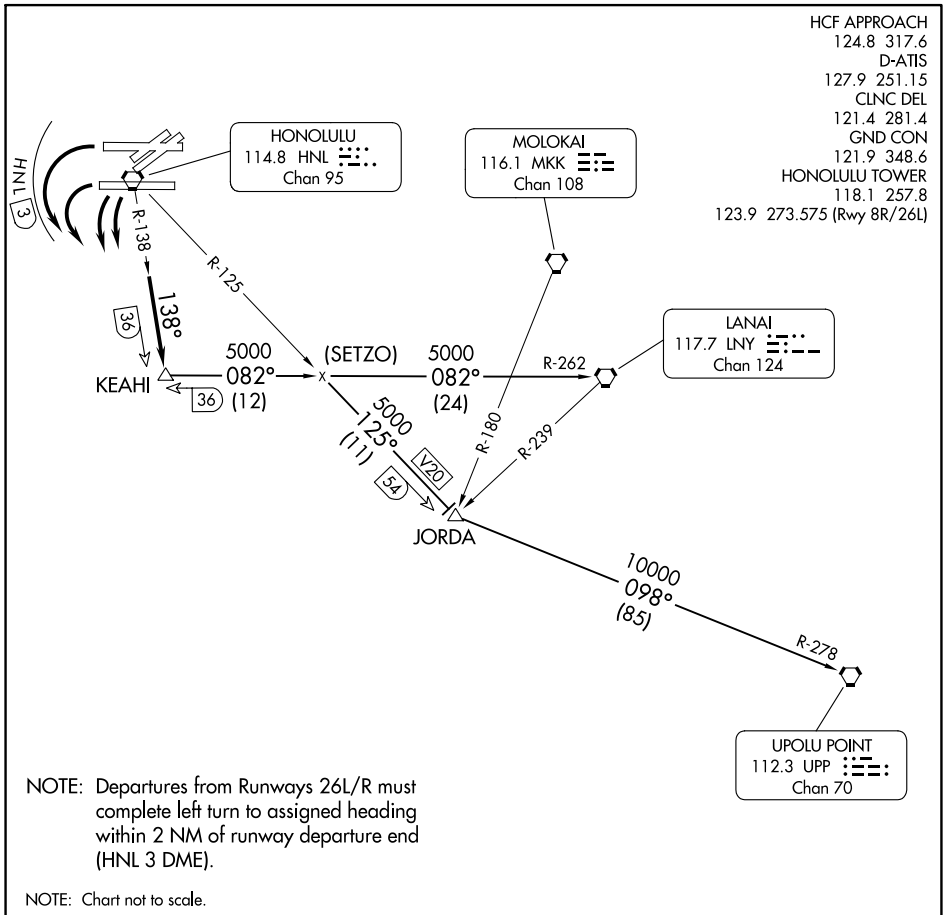
TAKEOFF RUNWAY 26L: Climb on heading 259° to intercept course 199° to cross BANZI at or below 5000, thence . . .

TAKEOFF RUNWAY 26R: Climb on heading 259° to intercept course 197° to cross BANZI at or below 5000, thence . . .

. . . on track 208° to LHAKE, then on track 208° for RADAR vectors to assigned route/fix, maintain 5000 or as assigned by ATC. Expect clearance to filed altitude/flight level within 10 minutes after departure.

- NOTE: ALANA departures expect direct/vectors to ALANA/V8/V16/V20/V21.
- NOTE: APACK departures expect direct/vectors to APACK/R463.
- NOTE: CANON departures expect direct/vectors to CANON/V15.
- NOTE: CARRP departures expect direct/vectors to CARRP/A579.
- NOTE: CHOKO departures expect direct/vectors to CHOKO/R584/B326.
- NOTE: CLUTS departures expect direct/vectors to CLUTS/R465.
- NOTE: DANNO departures expect direct/vectors to DANNO.
- NOTE: DOVRR departures expect direct/vectors to DOVRR/B596.
- NOTE: EBBER departures expect direct/vectors to EBBER/R577.
- NOTE: FITES departures expect direct/vectors to FITES/R578.
- NOTE: GECKO departures expect direct/vectors to GECKO/V4/V12/V16.
- NOTE: HAUNA departures expect direct/vectors to HAUNA/V8/V16/V20/V21/LNY.
- NOTE: HOOPA departures expect direct/vectors to HOOPA/A450.
- NOTE: JULLE departures expect direct/vectors to JULLE/V16/V20/V21.
- NOTE: KATHS departures expect direct/vectors to KATHS/A450.
- NOTE: KEOLA departures expect direct/vectors to KEOLA/V16.
- NOTE: KOA departures expect direct/vectors to KOA.
- NOTE: LILIA departures expect direct/vectors to LILIA/V15.
- NOTE: OPIHI departures expect direct/vectors to OPIHI/V8/V16/V20/V21.
- NOTE: PALAY departures expect direct/vectors to PALAY/V2/V8/LNY.
- NOTE: PUPPI departures expect direct/vectors to PUPPI/V16.
- NOTE: SCOON departures expect direct/vectors to SCOON.
- NOTE: SYVAD departures expect direct/vectors to SYVAD/V16.
- NOTE: THOMA departures expect direct/vectors to THOMA.
- NOTE: UPP departures expect direct/vectors to UPP.
- NOTE: ZIGIE departures expect direct/vectors to ZIGIE/A331.

KEAHI THREE DEPARTURE



PAC, 25 JAN 2024 to 21 MAR 2024

PAC, 25 JAN 2024 to 21 MAR 2024

DEPARTURE ROUTE DESCRIPTION

TAKEOFF RUNWAYS 22/26 ONLY: Turn left to heading assigned by tower, expect RADAR vectors to intercept HNL R-138; then via HNL R-138 to KEAHI INT, maintain 5000'; then via (transition). Expect clearance to enroute altitude/flight level at JORDA INT or LNY VORTAC.

JORDA TRANSITION (KEAH13.JORDA): From over KEAHI INT via LNY R-262 and HNL R-125 to JORDA INT.

LANAI TRANSITION (KEAH13.LNY): From over KEAHI INT via LNY R-262 to LNY VORTAC.

UPOLU TRANSITION (KEAH13.UPP): From over KEAHI INT via LNY R-262 and HNL R-125 to JORDA INT, thence via UPP R-278 to UPP VORTAC.

DEPARTURE ROUTE DESCRIPTION

Turn right/left to heading assigned by the Tower, expect vectors to KEOLA, maintain 5000; then on transition. Expect clearance to enroute altitude/flight level at KEOLA.

KATHS TRANSITION (KEOLA3.KATHS): From over KEOLA on HNL R-258 and SOK R-234 to KATHS.

LIHUE TRANSITION (KEOLA3.LIH): From over KEOLA on SOK R-111 and LIH R-148 to LIH VORTAC.

LIILIA TRANSITION (KEOLA3.LIILIA): From over KEOLA on track 282° to LIILIA.

NONNI TRANSITION (KEOLA3.NONNI): From over KEOLA on HNL R-258 to NONNI.

PUPPI TRANSITION (KEOLA3.PUPPI): From over KEOLA on track 271° to PUPPI.

SOUTH KAUAI TRANSITION (KEOLA3.SOK): From over KEOLA on SOK R-111 to SOK VORTAC.



HCF APPROACH	
118.3	269.0
D-ATIS	
127.9	251.15
CLNC DEL	
121.4	281.4
GND CON	
121.9	348.6
HONOLULU TOWER	
118.1	257.8
123.9	273.575 (Rwy 8R/26L)

TAKEOFF MINIMUMS

Rwys 26L/R: Standard.

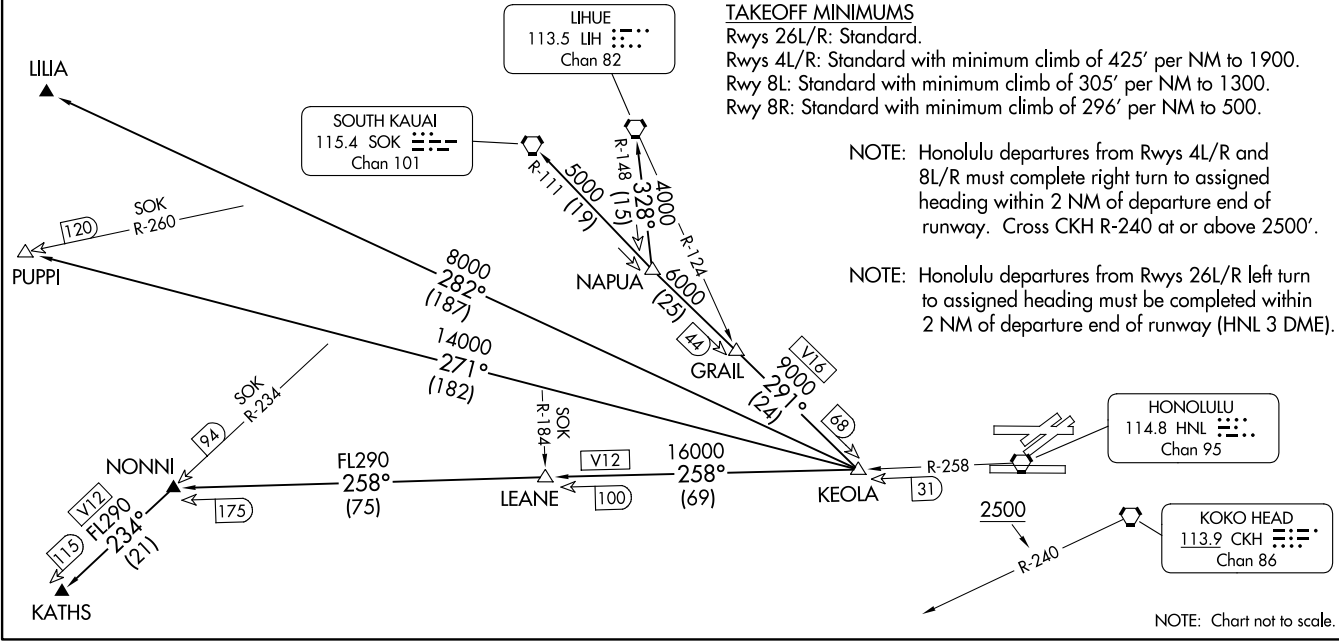
Rwys 4L/R: Standard with minimum climb of 425' per NM to 1900.

Rwy 8L: Standard with minimum climb of 305' per NM to 1300.

Rwy 8R: Standard with minimum climb of 296' per NM to 500.

NOTE: Honolulu departures from Rwys 4L/R and 8L/R must complete right turn to assigned heading within 2 NM of departure end of runway. Cross CKH R-240 at or above 2500'.

NOTE: Honolulu departures from Rwys 26L/R left turn to assigned heading must be completed within 2 NM of departure end of runway (HNL 3 DME).



NOTE: Chart not to scale.

KEOLA THREE DEPARTURE
(KEOLA3.KEOLA) 25FEB21

(KEOLA3.KEOLA) 23334
KEOLA THREE DEPARTURE

DANIEL K INOUYE INTL (HNL) (PHNL)
HONOLULU, HAWAII

DANIEL K INOUYE INTL (HNL) (PHNL)
HONOLULU, HAWAII

MOLOKAI FIVE DEPARTURE

AL-754 (FAA)

RADAR and DME required

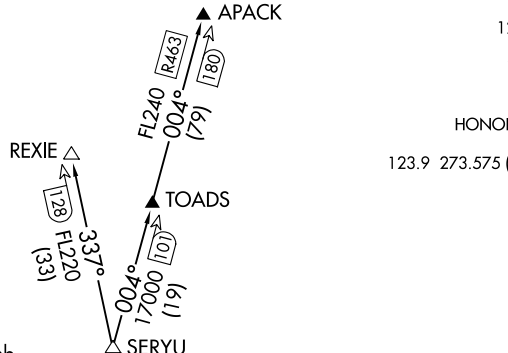
▲ ZIGIE

HCF APPROACH
 124.8 317.6
 D-ATIS
 127.9 251.15
 CLNC DEL
 121.4 281.4
 GND CON
 121.9 348.6
 HONOLULU TOWER
 118.1 257.8
 123.9 273.575 (Rwy 8R/26L)

**TOP ALTITUDE:
ASSIGNED BY ATC**

TAKEOFF MINIMUMS

Rwys 26L/R: Standard.
 Rwys 4L/R: Standard with minimum climb of 425' per NM to 1900, do not exceed 180K until established on assigned heading.
 Rwy 8L: Standard with minimum climb of 313' per NM to 1400.
 Rwy 8R: Standard with minimum climb of 296' per NM to 500.

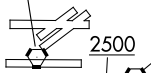


▲ CLUTS

▲ EBBER

▲ FITES

HONOLULU
 114.8 HNL
 Chan 95



KOKO HEAD
 113.9 CKH
 Chan 86

MOLOKAI
 116.1 MKK
 Chan 108

MAUI
 115.1 OGG
 Chan 98

UPOLU POINT
 112.3 UPP
 Chan 70

HILO
 116.9 ITO
 Chan 116

- NOTE: Departures from Rwys 26L/R must complete left turn to assigned heading within 2 NM of runway departure end (HNL 3 DME). Cross egress fixes at assigned cruising altitude.
- NOTE: Departures from Rwys 4L/R and 8L/R must complete right turn to assigned heading within 2 NM of runway departure end. Cross CKH R-240 at or above 2500.
- NOTE: REXIE Transition: Expect clearance to ZIGIE then on assigned route.
- NOTE: KOLEA Transition: Expect clearance to CLUTS then on assigned route.
- NOTE: CODDY Transition: Expect clearance to EBBER or FITES then on assigned route.

(CONTINUED ON FOLLOWING PAGE)

MOLOKAI FIVE DEPARTURE

PAC, 25 JAN 2024 to 21 MAR 2024

PAC, 25 JAN 2024 to 21 MAR 2024



DEPARTURE ROUTE DESCRIPTION

Turn right/left to heading as assigned by Tower, expect vectors to MKK VORTAC, maintain 5000; then on transition. Expect clearance to enroute altitude/flight level at MKK VORTAC. Cross egress fixes REXIE, APACK, KOLEA, and CODDY at assigned cruising altitude, unless otherwise advised by ATC.

APACK TRANSITION (MKK5.APACK): From over MKK VORTAC on MKK R-004 to APACK.

CODDY TRANSITION (MKK5.CODDY): From over MKK VORTAC on MKK R-056 and CKH R-075 to CODDY.

KOLEA TRANSITION (MKK5.KOLEA): From over MKK VORTAC on MKK R-040 to KOLEA.

PULPS TRANSITION (MKK5.PULPS): From over MKK VORTAC on MKK R-108 to PULPS.

REXIE TRANSITION (MKK5.REXIE): From over MKK VORTAC on MKK R-004 and OGG R-337 to REXIE.

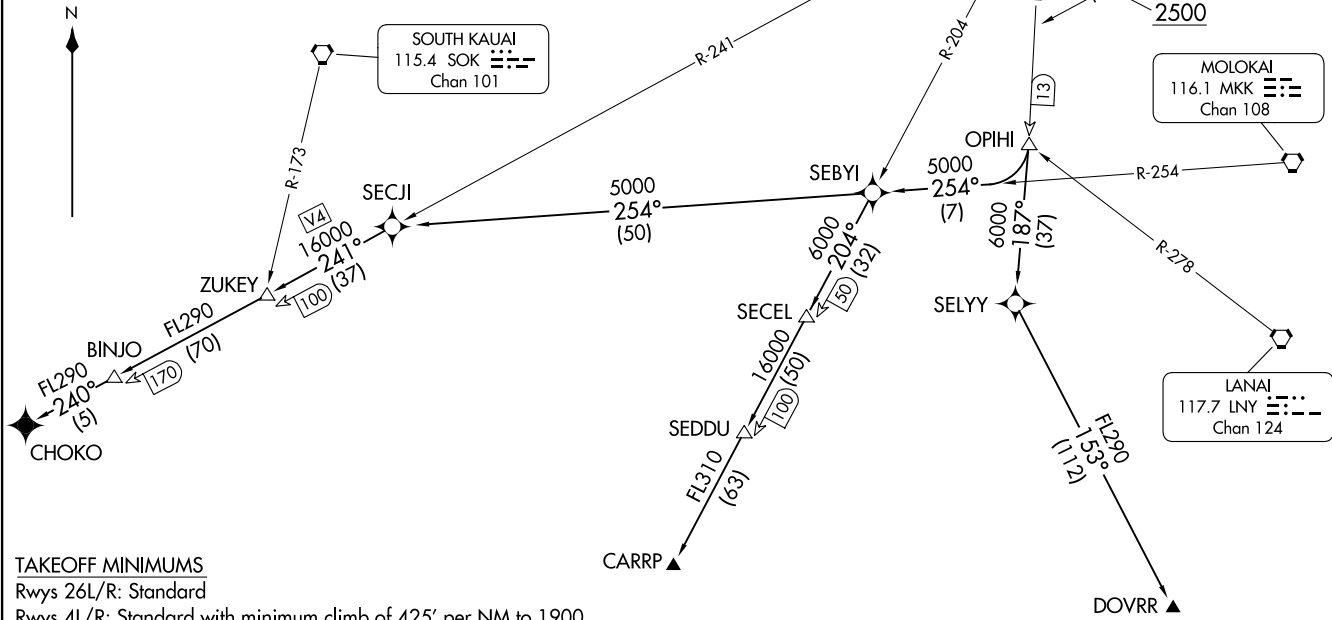
PAC, 25 JAN 2024 to 21 MAR 2024

PAC, 25 JAN 2024 to 21 MAR 2024

HCF APPROACH
118.3 269.0
D-ATIS
127.9 251.15
CLINC DEL
121.4 281.4
GND CON
121.9 348.6
HONOLULU TOWER
118.1 257.8
123.9 273.575 (Rwy 8R/26L)

NOTE: Honolulu departures from Rwys 4L/R and 8L/R must complete right turn to assigned heading within 2 NM of departure end of runway. Cross CKH R-240 at or above 2500.

NOTE: Honolulu departures Rwys 26L/R left turn to assign heading must be completed within 2 NM of departure end of runway (HNL 3 DME).



TAKEOFF MINIMUMS
Rwys 26L/R: Standard
Rwys 4L/R: Standard with minimum climb of 425' per NM to 1900.
Rwy 8L: Standard with minimum climb of 305' per NM to 1300.
Rwy 8R: Standard with minimum climb of 296' per NM to 500.

(CONTINUED ON FOLLOWING PAGE)

NOTE: Chart not to scale.



DEPARTURE ROUTE DESCRIPTION

Turn right/left to heading assigned by Tower, expect vectors to OPIHI, maintain 5000; then on (transition). Expect clearance to enroute altitude/flight level at OPIHI.

CARRP TRANSITION (OPIHI3.CARRP): From over OPIHI right turn to intercept MKK R-254 to SEBYI, then on HNL R-204 to CARRP.

CHOKO TRANSITION (OPIHI3.CHOKO): From over OPIHI right turn to intercept MKK R-254 to SECJI, then on HNL R-241 to BINJO, then on track 240° to CHOKO.

DOVRR TRANSITION (OPIHI3.DOVRR): From over OPIHI on HNL R-187 to SELYY, then on track 153° to DOVRR.

PAC, 25 JAN 2024 to 21 MAR 2024

PAC, 25 JAN 2024 to 21 MAR 2024

NOTE: Departures from Runways 4L/R and 8L/R must complete right turn to assigned heading within 2 NM of runway departure end. Cross CKH R-240 at or above 2500.
NOTE: Departures Runways 26L/R must complete left turn to assign heading within 2 NM of runway departure end (HNL 3 DME).

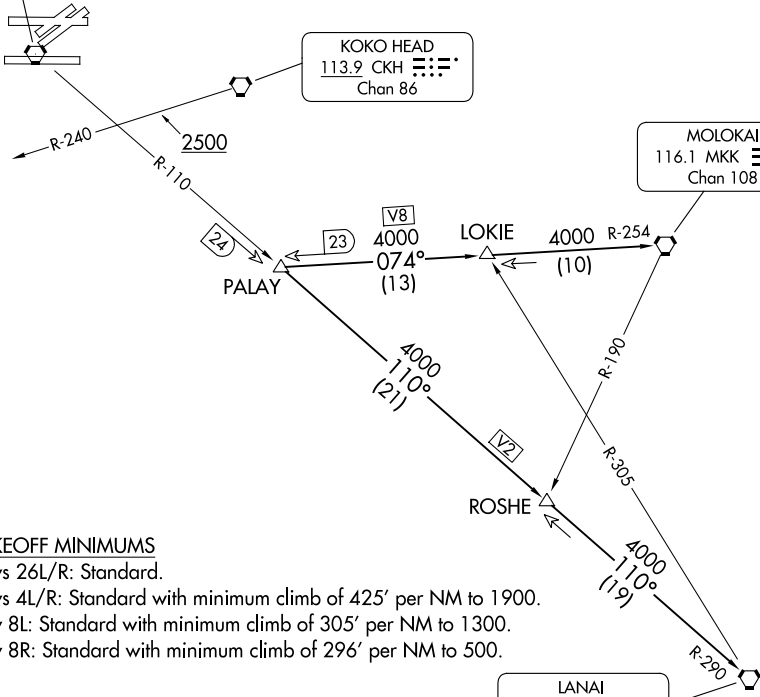
HCF APPROACH
124.8 317.6
D-ATIS
127.9 251.15
CLNC DEL
121.4 281.4
GND CON
121.9 348.6
HONOLULU TOWER
118.1 257.8
123.9 273.575 (Rwy 8R/26L)

HONOLULU
114.8 HNL
Chan 95

KOKO HEAD
113.9 CKH
Chan 86

MOLOKAI
116.1 MKK
Chan 108

LANAI
117.7 LNY
Chan 124



TAKEOFF MINIMUMS

Rwys 26L/R: Standard.
Rwys 4L/R: Standard with minimum climb of 425' per NM to 1900.
Rwy 8L: Standard with minimum climb of 305' per NM to 1300.
Rwy 8R: Standard with minimum climb of 296' per NM to 500.

NOTE: Chart not to scale.

DEPARTURE ROUTE DESCRIPTION

Turn right/left to heading assigned by Tower, expect vectors to PALAY, maintain 5000; then on (transition). Expect clearance to enroute altitude/flight level at LNY VORTAC.

LANAI TRANSITION (PALAY3.LNY): From over PALAY INT on HNL R-110 and LNY R-290 to LNY VORTAC.

MOLOKAI TRANSITION (PALAY3.MKK): From over PALAY INT on MKK R-254 to MKK VORTAC.

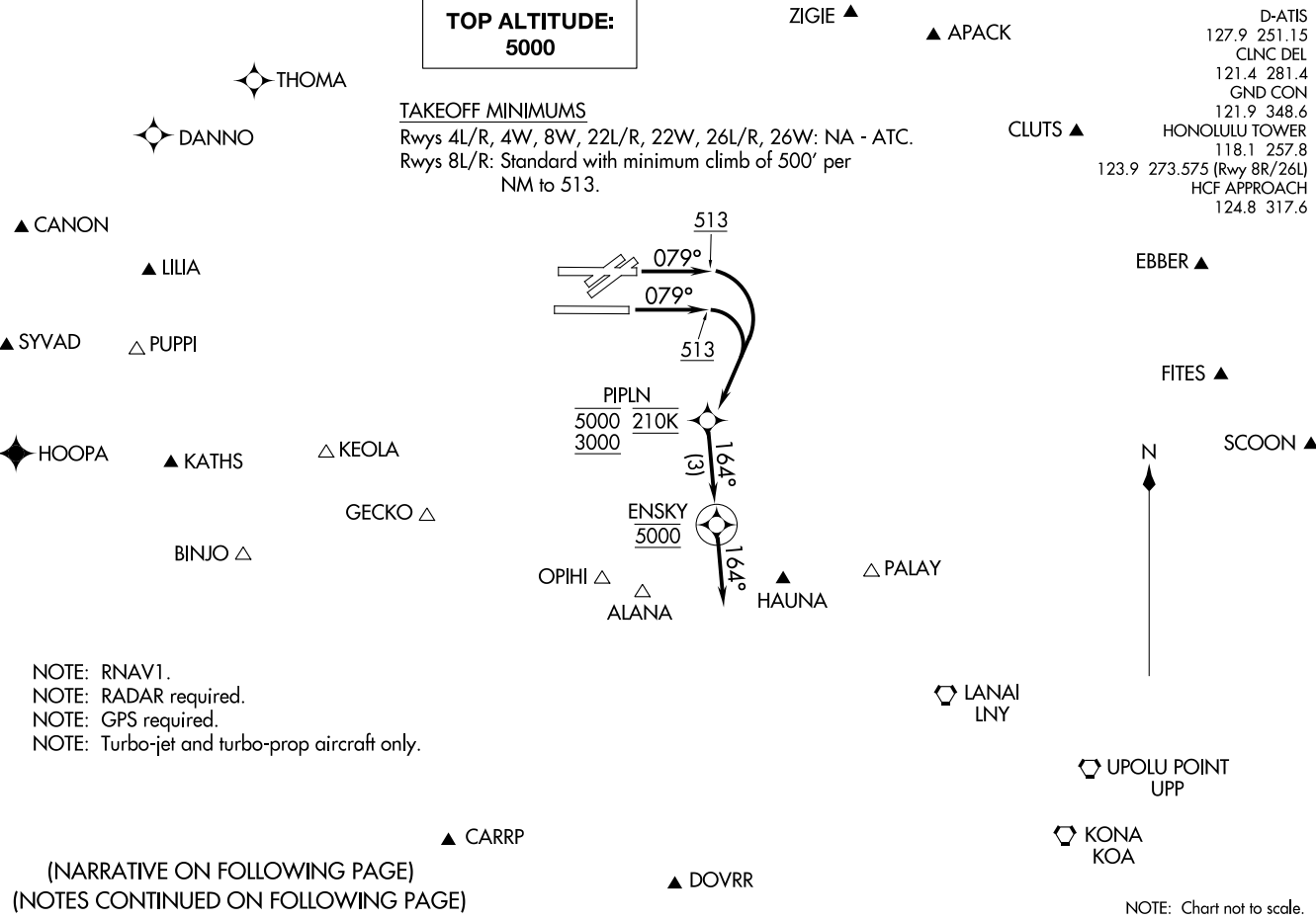
PIPLN ONE DEPARTURE (RNAV)
(PPLN1, PPLN) 30ANZ0

DANIEL K INOUE INTL (HNL) (PHNL)
HONOLULU, HAWAII

**TOP ALTITUDE:
5000**

TAKEOFF MINIMUMS

Rwys 4L/R, 4W, 8W, 22L/R, 22W, 26L/R, 26W: NA - ATC.
Rwys 8L/R: Standard with minimum climb of 500' per NM to 513.



- NOTE: RNAV1.
- NOTE: RADAR required.
- NOTE: GPS required.
- NOTE: Turbo-jet and turbo-prop aircraft only.

(NARRATIVE ON FOLLOWING PAGE)
(NOTES CONTINUED ON FOLLOWING PAGE)

NOTE: Chart not to scale.

(PPLN1, PPLN) 20030
PIPLN ONE DEPARTURE (RNAV)

AL-754 (FAA)

DANIEL K INOUE INTL (HNL) (PHNL)
HONOLULU, HAWAII

D-ATIS
127.9 251.15
CLNC DEL
121.4 281.4
GND CON
121.9 348.6
HONOLULU TOWER
118.1 257.8
123.9 273.575 (Rwy 8R/26L)
HCF APPROACH
124.8 317.6



DEPARTURE ROUTE DESCRIPTION

TAKEOFF RUNWAYS 8L/R: Climb on heading 079° to 513, then right turn direct PIPLN between 3000 and 5000 at 210K, thence. . . .

. . . .on track 164° to ENSKY, then on track 164° for RADAR vectors to assigned route/fix, maintain 5000 or as assigned by ATC. Expect clearnace to filed altitude/flight level within 10 minutes after departure.

- NOTE: ALANA departures expect direct/vectors to ALANA/V8/V16/V20/V21.
- NOTE: APACK departures expect direct/vectors to APACK/R463.
- NOTE: BINJO departures expect direct/vectors to BINJO/R584/B326.
- NOTE: CANON departures expect direct/vectors to CANON/V15.
- NOTE: CARRP departures expect direct/vectors to CARRP/A579.
- NOTE: CLUTS departures expect direct/vectors to CLUTS/R465.
- NOTE: DANNO departures expect direct/vectors to DANNO.
- NOTE: DOVRR departures expect direct/vectors to DOVRR/B596.
- NOTE: EBBER departures expect direct/vectors to EBBER/R577.
- NOTE: FITES departures expect direct/vectors to FITES/R578.
- NOTE: GECKO departures expect direct/vectors to GECKO/V4/V12/V16.
- NOTE: HAUNA departures expect direct/vectors to HAUNA/V8/V16/V20/V21/LNY.
- NOTE: HOOPA departures expect direct/vectors to HOOPA/A450.
- NOTE: KATHS departures expect direct/vectors to KATHS/A450.
- NOTE: KEOLA departures expect direct/vectors to KEOLA/A16.
- NOTE: KOA departures expect direct/vectors to KOA.
- NOTE: LILIA departures expect direct/vectors to LILIA/V15.
- NOTE: LNY departures expect direct/vectors to LNY.
- NOTE: OPIHI departures expect direct/vectors to OPIHI/V8/V16/V20/V21.
- NOTE: PALAY departures expect direct/vectors to PALAY/V2/V8/LNY.
- NOTE: PUPPI departures expect direct/vectors to PUPPI/V16.
- NOTE: SCOON departures expect direct/vectors to SCOON.
- NOTE: SYVAD departures expect direct/vectors to SYVAD/V16.
- NOTE: THOMA departures expect direct/vectors to THOMA.
- NOTE: UPP departures expect direct/vectors to UPP.
- NOTE: ZIGIE departures expect direct/vectors to ZIGIE/A331.

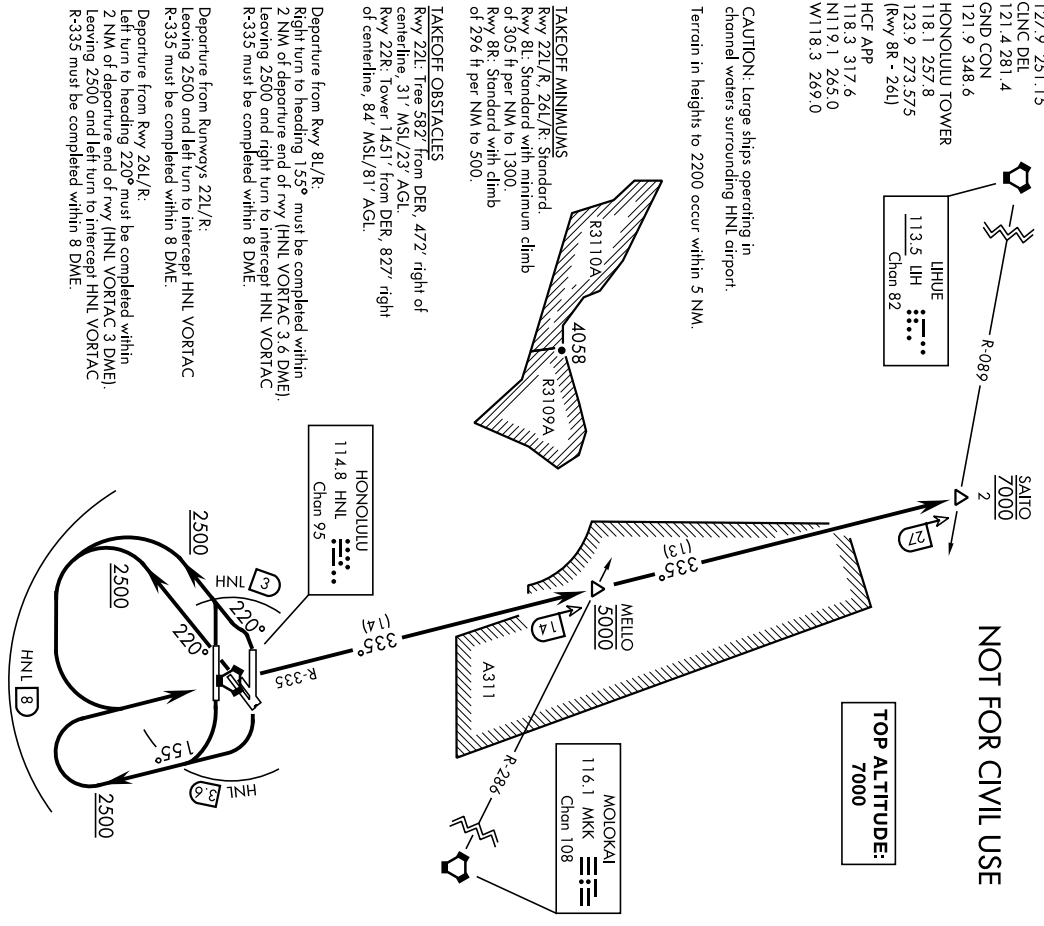
PAC, 25 JAN 2024 to 21 MAR 2024

PAC, 25 JAN 2024 to 21 MAR 2024

DME required

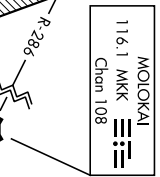
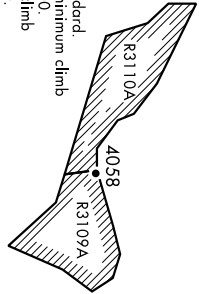
- D-ATIS 127.9 251.15
- CLINC DEL 121.4 281.4
- GND CON 121.9 348.6
- HONOULIU TOWER 118.1 257.8
- 123.9 273.575 (Rwy 8R - 26L)
- HCF APP 118.3 317.6
- N119.1 265.0
- W118.3 269.0

CAUTION: Large ships operating in channel waters surrounding HNL airport.
Terrain in heights to 2200 occur within 5 NM.



NOT FOR CIVIL USE

TOP ALTITUDE:
7000



TAKEOFF MINIMUMS

Rwy 22L/R, 26L/R: Standard Rwy 8L: Standard with minimum climb of 305 ft per NM to 1300.
Rwy 8Rc: Standard with climb of 296 ft per NM to 500.

TAKEOFF OBSTACLES

Rwy 22L: Tree 582' from DER, 472' right of centerline, 31' MSL/23' AGL.
Rwy 22R: Tower 1451' from DER, 827' right of centerline, 84' MSL/81' AGL.

Departure from Rwy 8L/R:

Right turn to heading 155° must be completed within 2 NM of departure end of rwy (HNL VORTAC 3.6 DME).
Leaving 2500 and right turn to intercept HNL VORTAC R-335 must be completed within 8 DME.

Departure from Runways 22L/R:

Leaving 2500 and left turn to intercept HNL VORTAC R-335 must be completed within 8 DME.

Departure from Rwy 26L/R:

Left turn to heading 220° must be completed within 2 NM of departure end of rwy (HNL VORTAC 3 DME).
Leaving 2500 and left turn to intercept HNL VORTAC R-335 must be completed within 8 DME.

DEPARTURE ROUTE DESCRIPTION

TAKEOFF RUNWAYS 8L/R: Climbing right turn heading 155° to 2500, then climbing right turn to HNL VORTAC and on HNL R-335 to cross MELLO at 5000. Thence....

TAKEOFF RUNWAYS 22L/R: Climb heading 220° to 2500, then climbing left turn to HNL VORTAC and on HNL R-335 to cross MELLO at 5000. Thence....

TAKEOFF RUNWAYS 26L/R: Climbing left turn heading 220° to 2500, then climbing left turn to HNL VORTAC and on HNL R-335 to cross MELLO at 5000. Thence....

... continue on HNL R-335 to cross SAITO at 7000, expect clearance to enroute altitude at SAITO.