

COPTER RNAV (GPS) RWY 24

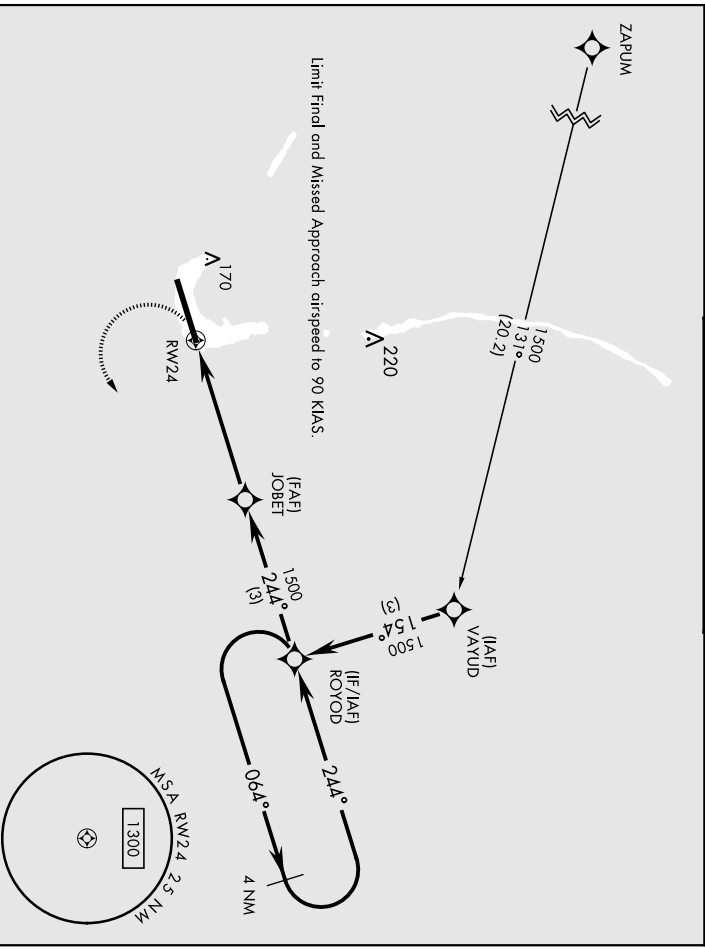
[USA]

BUCHOLZ AAF (PKWA)

▼ When control tower closed, obtain local dillimeter
 setting from Base Ops on 118.8.
 DME/DME RNP-0.3 NA

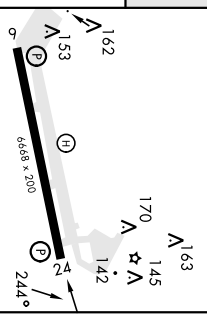
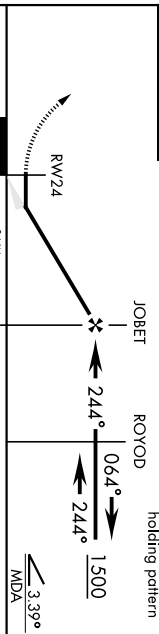
MISSED APPROACH: Climbing left turn
 to 1500 direct ROYOD and hold.

AWOS 119.675	TOWER ✳ 126.2 360.2	GND CON 121.9
------------------------	-------------------------------	-------------------------



ELEV	16	TDZE	16
------	----	------	----

1500 ROYOD TA 5500
 VGSi and Descent
 Angles not coincident.



CATEGORY	COPTER	HIRL Rwy 6-24
LNNAV MDA	440-1/2	424
	440-1/2	424
	500-1/2	

KWAJALEIN USAKA, MARSHALL I 08° 43'N-167° 44'E BUCHOLZ AAF (PKWA)

Arrch 1 02DEC21

COPTER RNAV (GPS) RWY 24

COPTER RNAV (GPS) RWY 6

[USA]

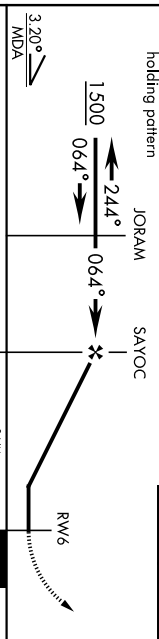
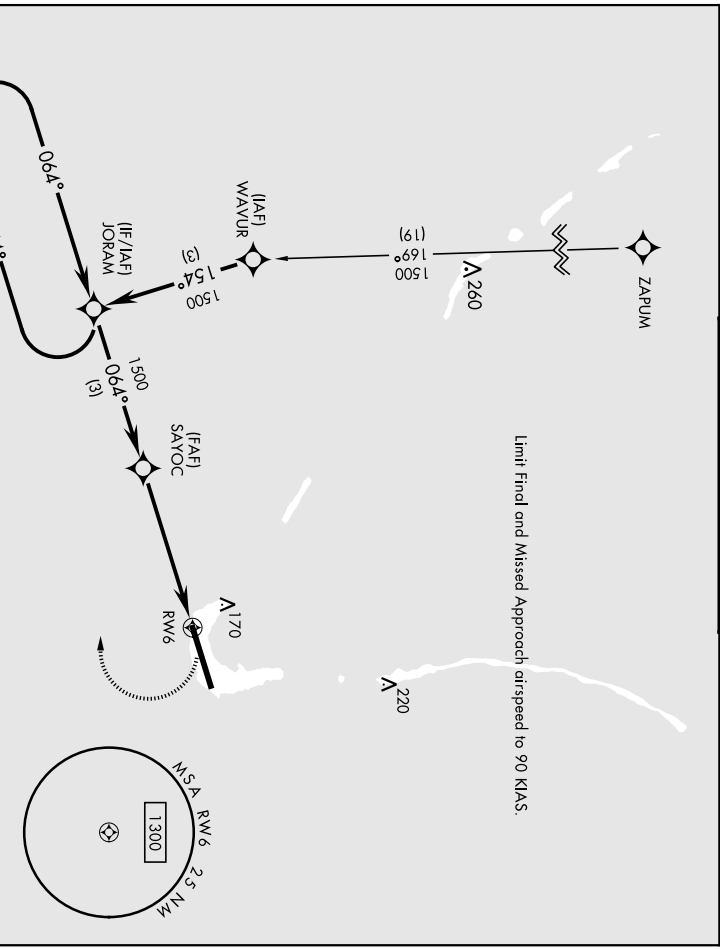
BUCHOLZ AAF (PKWA)

ARCH CRS	Rwy Idg	6668
064°	TDZE	16
	Appt Elev	16

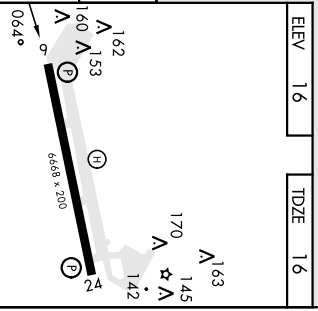
When control tower closed, obtain local dimmer setting from Base Ops on 118.8.
DME/DME RNP-0.3 NA

MISSED APPROACH: Climbing right turn to 1500 direct JORAM and hold.

AWOS	TOWER ✱	GND CON
119.675	126.2 360.2	121.9



CATEGORY	COPTER	REIL Rwy 6
LNAY MDA	480-1/2	HRL Rwy 6-24
	464	



KWAJALEIN USAKA, MARSHALL I
 08° 43'N-167° 41'E
 BUCHOLZ AAF (PKWA)
 Arndt 1 05JAN17
COPTER RNAV (GPS) RWY 6

RNAV (GPS) RWY 24

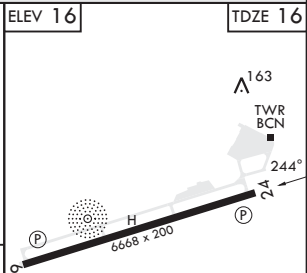
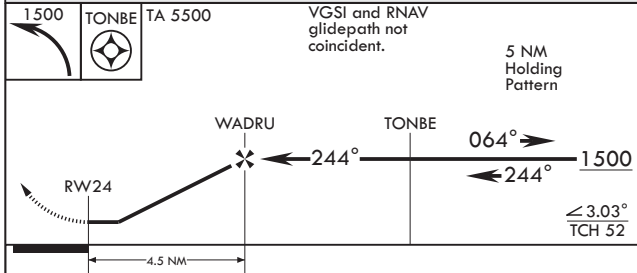
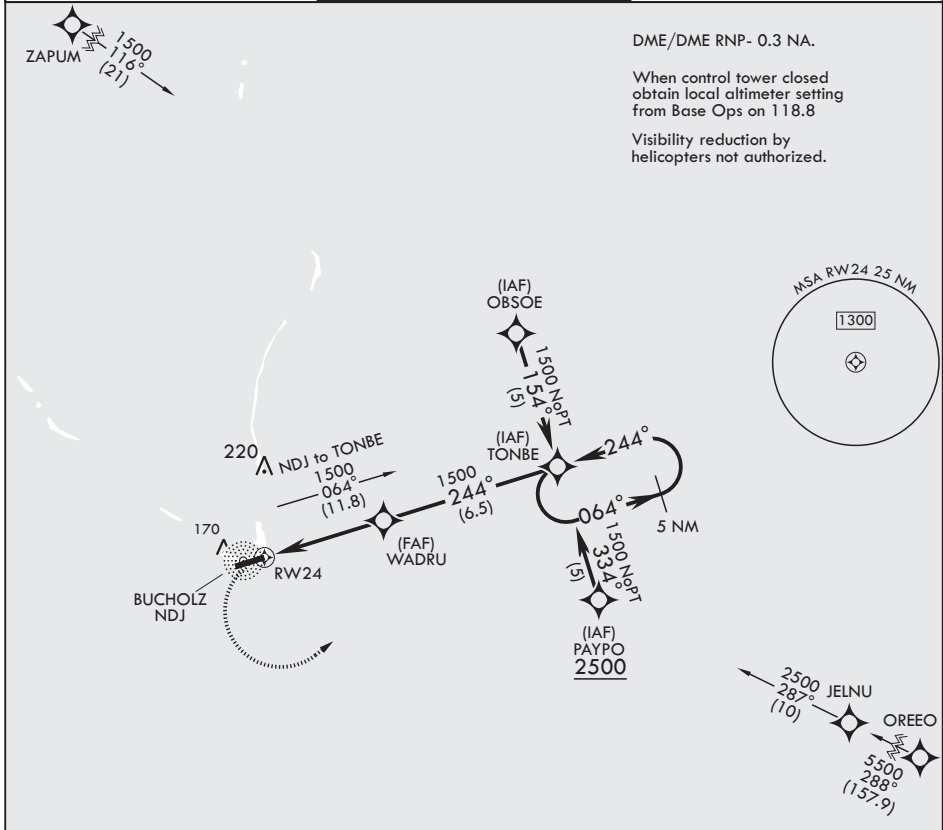
APCH CRS 244°	Rwy Idg 6668
	TDZE 16
	Arprt Elev 16

- (USA)

BUCHOLZ AAF (PKWA)

MISSED APPROACH: Climbing left turn to 1500 direct TONBE and hold.

AWOS 119.675	TOWER * 126.2 360.2	GND CON 121.9
------------------------	-------------------------------	-------------------------



CATEGORY	A	B	C	D
LNAV MDA	460-1	444 (500-1)	460-1½ 444 (500-1½)	580-2 (500-1½)
CIRCLING	500-1	484 (500-1)	500-1½ 484 (500-1½)	564 (600-2)

HIRL all Rwys
REIL Rwy 6

RNAV (GPS) RWY 24

PAC, 25 JAN 2024 to 21 MAR 2024

PAC, 25 JAN 2024 to 21 MAR 2024

RNAV (GPS) RWY 6

[USA]

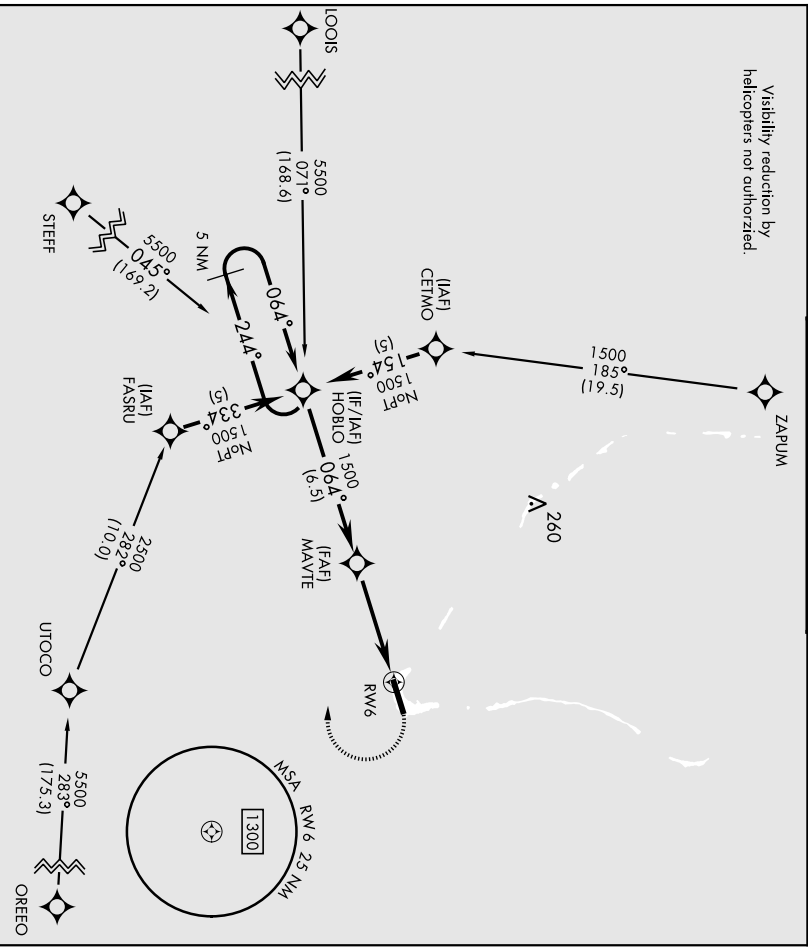
BUCHOLZ AAF (PKWA)

ARCH CRS Rwy Idg **6668**
TDZE **16**
064° Aprt Elev **16**

MISSED APPROACH: Climbing right turn
 to 1 500 direct HOBLO and hold

When control tower closed, obtain local altimeter setting from Base Ops on 118.8. DME/DME RNP-0.3 NA.	AWOS 119.675	TOWER * 126.2 360.2	GND CON 121.9
---	-------------------------------	--------------------------------------	--------------------------------

Visibility reduction by
 helicopters not authorized.



CATEGORY LNAV MDA CIRCLING	A	480-1 464 (500-1)	B	480-1 1/2 464 (500-1 1/2)	C	480-1 1/2 464 (500-1 1/2)	D	580-2 564 (600-2)
	Holding Pattern HOBLO 5 NM 1500 244° 064° TCH 50 3.04°		MAVTE 1 1.3 to RW6 RW6		TA 5500 1500 HOBLO 1500 ELEV 16 TDZE 16			

RNAV (GPS) RWY 6