

WAAS CH <b>86520</b> <b>W25A</b>	APP CRS <b>254°</b>	Rwy Idg TDZE Apt Elev <b>12002</b> <b>2503</b> <b>2543</b>
--	------------------------	---

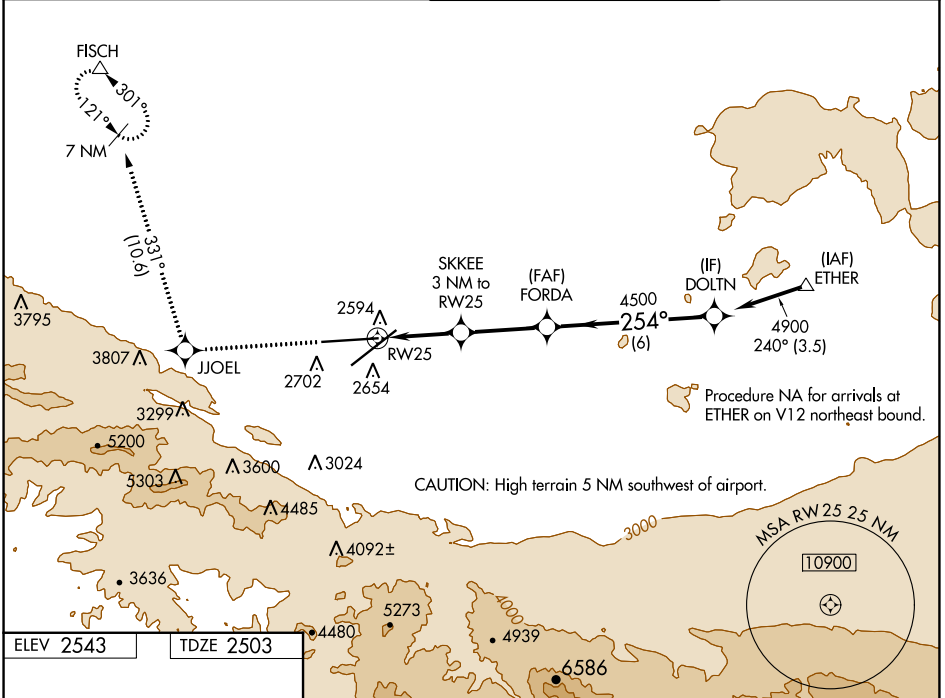
# RNAV (GPS) RWY 25

PALMDALE USAF PLANT 42 (PMD)

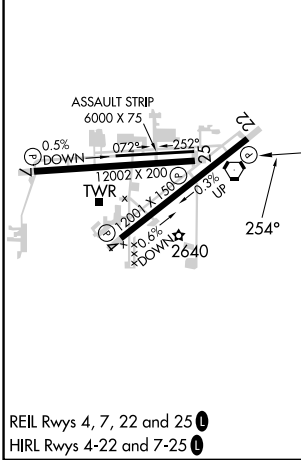
**⚠** For uncompensated Baro-VNAV systems, LNAV/VNAV NA below -6°C (22°F) or above 50°C (123°F). Circling NA for Cats C and D south of Rwy 4 and 25.  
DME/DME RNP-0.3 NA.

**MISSED APPROACH:** Climb 6700 direct JJOEL and on track 331° direct FISCH and hold, continue climb-in-hold to 6700.

ATIS <b>118.275</b>	JOSHUA APP CON <b>124.55 363.0</b>	PALMDALE TOWER * <b>123.7 (CTAF) 317.6</b>	GND CON <b>121.9 317.6</b>
------------------------	---------------------------------------	---	-------------------------------



ELEV 2543	TDZE 2503
-----------	-----------



6700	JJOEL	↑	tr 331°	FISCH	VGSi and RNAV glidepath not coincident (VGSi Angle 3.00/TCH 76).			
*LNAV only.					FORDA	DOLTN		
*1 NM to RW25					4500	4900		
RW25					3500*	GP 3.00° TCH 63		
					1 NM	2 NM	3.1 NM	6 NM
CATEGORY	A		B		C		D	
LPV DA	2703-3/4		200 (200-3/4)					
LNAV/VNAV DA	2806-1		303 (300-1)					
LNAV MDA	2880-1		377 (400-1)					
<b>C</b> CIRCLING	3020-1 477 (500-1)		3060-1 517 (600-1)		3140-1½ 597 (600-1½)		3740-3 1197 (1200-3)	

PALMDALE, CALIFORNIA  
Amdt 2 24MAY18

34°38'N-118°05'W

# RNAV (GPS) RWY 25

SW-3, 22 FEB 2024 to 21 MAR 2024

SW-3, 22 FEB 2024 to 21 MAR 2024