

WAAS CH <b>58023</b> <b>W34A</b>	APP CRS <b>337°</b>	Rwy Idg TDZE Apt Elev	<b>6081</b> <b>50</b> <b>54</b>
--	------------------------	-----------------------------	---------------------------------------

# RNAV (GPS) RWY 34

RHODE ISLAND TF GREEN INTL (PVD)

RNP APCH

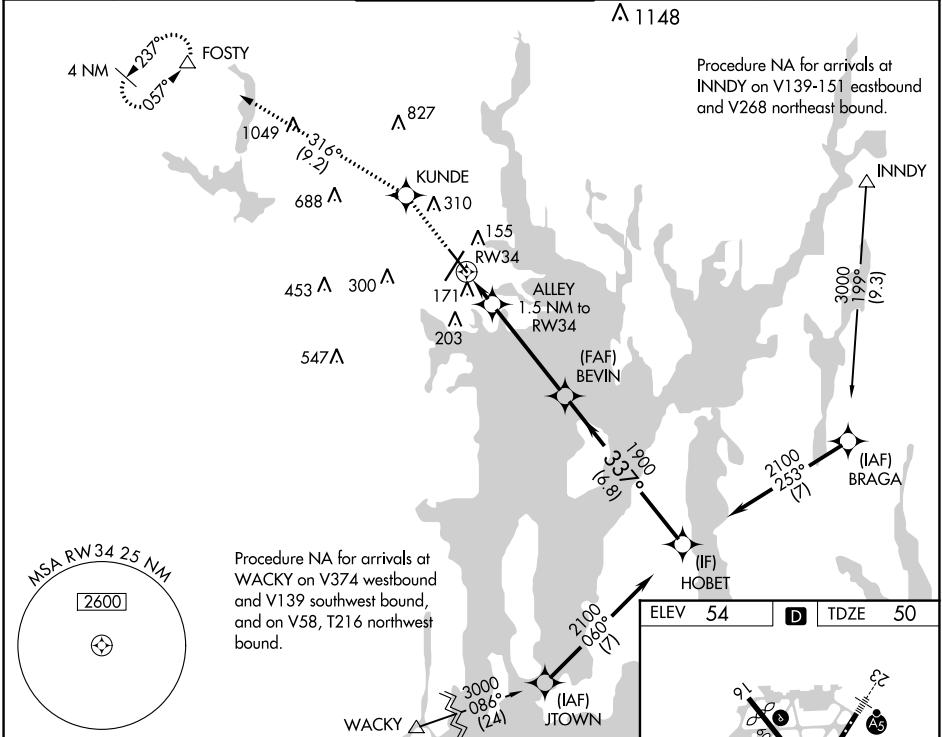
**▽** For uncompensated Baro-VNAV systems, LNAV/VNAV NA below -16°C or above 54°C. For inop MALS, increase LNAV/VNAV all Cats visibility to RVR 5000. For inop MALS, increase LNAV Cat A/B visibility to RVR 5500, and Cat C/D visibility to RVR 6000. Rwy 34 helicopter visibility reduction below RVR 4000 NA.

MALS



**MISSED APPROACH:**  
Climb to 2500 direct KUNDE and on track 316° to FOSTY and hold.

D-ATIS <b>124.2</b>	PROVIDENCE APP CON * <b>123.675 244.875</b>	PROVIDENCE TOWER * <b>120.7 (CTAF) 0 257.8</b>	GND CON <b>121.9 348.6</b>	CLNC DEL <b>126.65 348.6</b>
------------------------	--	---	-------------------------------	---------------------------------

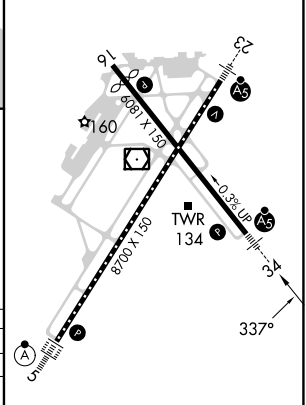


NE-1, 22 FEB 2024 to 21 MAR 2024

NE-1, 22 FEB 2024 to 21 MAR 2024

2500	KUNDE	tr 316°	FOSTY	VGSI and RNAV glidepath not coincident (VGSI Angle 3.00/TCH 60.)	HOBET
*LNAV only.	ALLEY 1.5 NM to RW34		BEVIN	1900	2100
	RW34			1900	GP 3.00° TCH 53
	1.5 NM	4.2 NM	6.8 NM		

ELEV 54	<b>D</b>	TDZE 50
---------	----------	---------



CATEGORY	A	B	C	D
LPV DA		330/40	280 (300-¾)	
LNAV/VNAV DA		349/40	299 (300-¾)	
LNAV MDA		440/40	390 (400-¾)	
CIRCLING	560-1 506 (600-1)	640-1 586 (600-1)	640-1½ 586 (600-1½)	860-2½ 806 (900-2½)

TDZ/CL Rwy 5 **Ⓛ**  
REIL Rwy 16 **Ⓛ**  
HIRL Rws 5-23 and 16-34 **Ⓛ**