

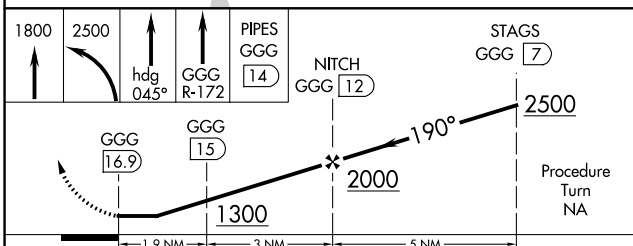
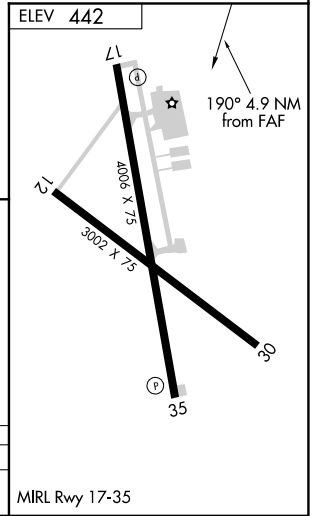
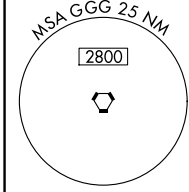
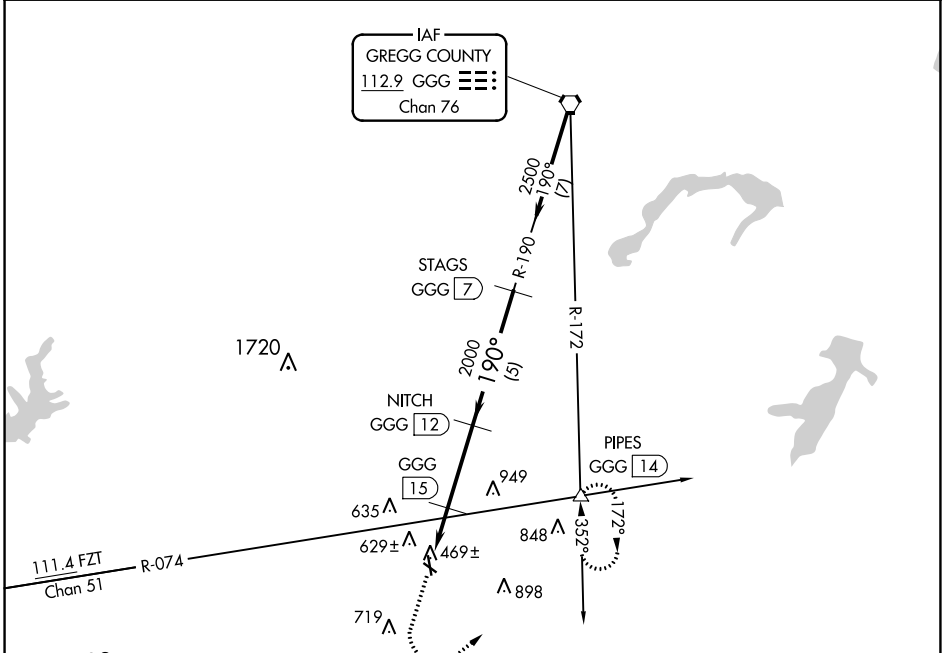
VORTAC GGG 112.9 Chan 76	APP CRS 190°	Rwy Idg TDZE Apt Elev N/A N/A 442
---------------------------------------	------------------------	--

VOR/DME-A
RUSK COUNTY (R.F.I)

NA When local altimeter setting not received, use Longview altimeter setting and increase all MDAs 60 feet and Circling Cat C visibility 1/4 SM. Circling Rwy 12, 17 and 30 NA at night.

MISSED APPROACH: Climb to 1800 then climbing left turn to 2500 via heading 045° and GGG R-172 to PIPES INT/14 DME and hold.

AWOS-3 119.375	LONGVIEW APP CON ★ 124.275 257.975	UNICOM 122.8 (CTAF)
--------------------------	--	-------------------------------



CATEGORY	A	B	C	D
CIRCLING	1220-1 778 (800-1)	1220-1 1/4 778 (800-1 1/4)	1220-2 1/4 778 (800-2 1/4)	NA

SC-2, 22 FEB 2024 to 21 MAR 2024

SC-2, 22 FEB 2024 to 21 MAR 2024