

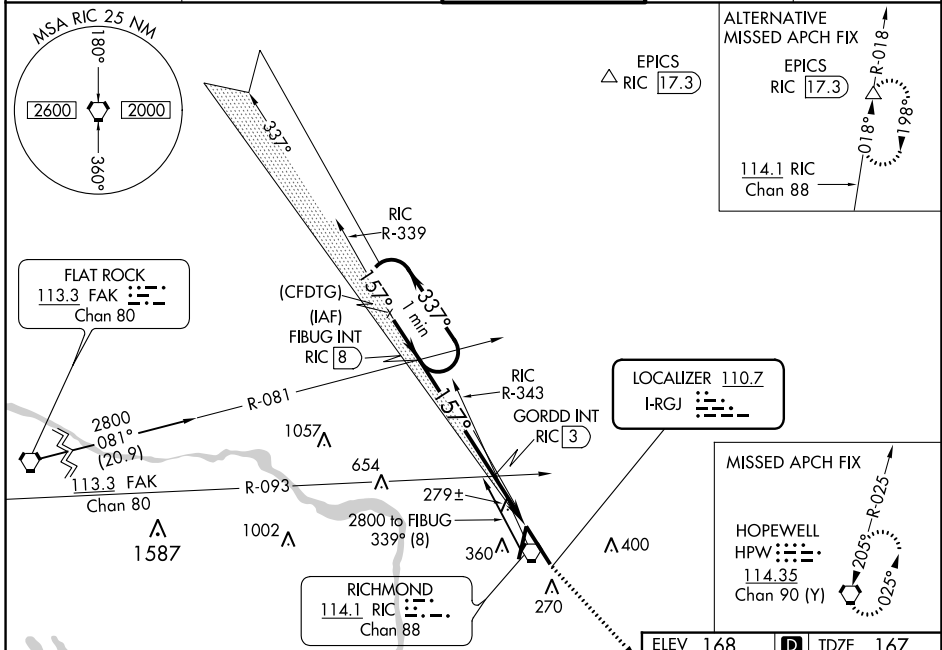
LOC I-RGJ 110.7	APP CRS 157°	Rwy Idg TDZE Apt Elev	9003 167 168
---------------------------	------------------------	-----------------------------	---

ILS or LOC RWY 16

RICHMOND INTL (RIC)

<p>⚠ For inop ALS, increase S-LOC 16 Cats C and D visibility to 2 SM. GORDD Fix Minimums: for inop ALS, increase S-LOC 16 Cats C and D visibility to 1½ SM. **RVR 1800 authorized with use of FD or AP or HUD to DA. % DME from RIC VORTAC.</p>	<p>MALSR AS</p>	<p>MISSED APPROACH: Climb to 2000 direct HPW VORTAC and hold.</p>
--	---------------------	---

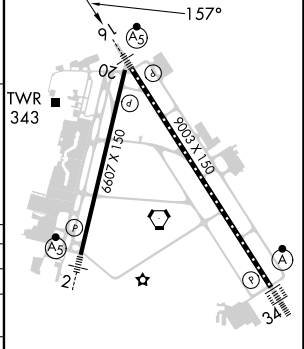
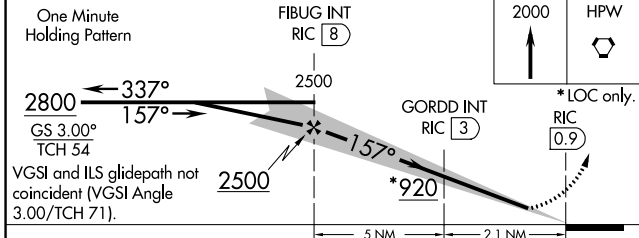
ATIS 119.15 263.025	POTOMAC APP CON 126.4 282.375 (001°-185°) 126.75 307.2 (186°-360°)	RICHMOND TOWER 121.1 257.8	GND CON 121.9 348.6	CLNC DEL 127.55 348.6
-------------------------------	--	--------------------------------------	-------------------------------	---------------------------------



NE-3, 22 FEB 2024 to 21 MAR 2024

NE-3, 22 FEB 2024 to 21 MAR 2024

ELEV 168	D	TDZE 167
----------	---	----------



CATEGORY	A	B	C	D
S-ILS 16 **		367/24	200 (200-½)	
S-LOC 16	920/24 753 (800-½)	920/40 753 (800-¾)	920-1¾	753 (800-1¾)
C CIRCLING	920-1 752 (800-1)	920-1¼ 752 (800-1¼)	920-2½	752 (800-2½)
GORDD FIX MINIMUMS %				
S-LOC 16	580/24	413 (500-½)	580/40	413 (500-¾)
C CIRCLING	660-1	492 (500-1)	700-1½ 532 (600-1½)	720-2 552 (600-2)

TDZ/CL Rwy 34					
HIRL Rws 2-20 and 16-34					
REIL Rwy 20					
FAF to MAP 7.2 NM					
Knots	60	90	120	150	180
Min:Sec	7:12	4:48	3:36	2:53	2:24