

WAAS CH 93518 W16A	APP CRS 164°	Rwy Idg TDZE 2433 Apt Elev 2437	5089
--	------------------------	---	-------------

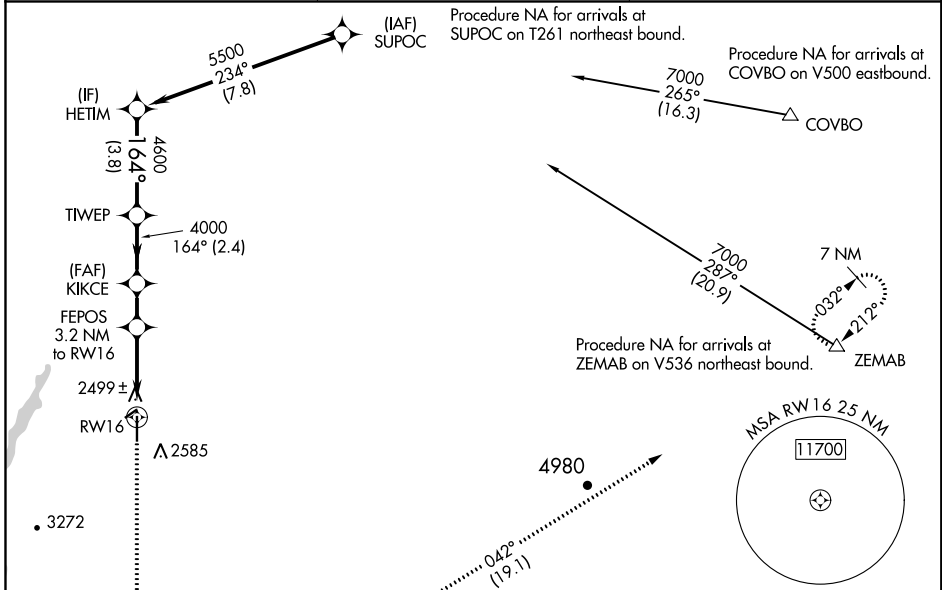
RNAV (GPS) RWY 16

MADRAS MUNI (S33)

Baro-VNAV NA when using Redmond altimeter setting. For uncompensated Baro-VNAV systems, LNAV/VNAV NA below -19°C (-2°F) or above 54°C (130°F). Rwy 16 helicopter visibility reduction below 3/4 SM NA. DME/DME RNP-0.3 NA. When local altimeter setting not received, use Redmond altimeter setting and increase all DA and MDA 580 feet; increase LPV all Cats visibility 2 2/3 SM, LNAV/VNAV all Cats visibility 2 3/8 SM, LNAV and Circling Cat A visibility 1/4 SM, LNAV and Circling Cat B visibility 1/2 SM, and increase LNAV and Circling Cat C visibility 1 1/4 SM.

MISSED APPROACH: Climb to 7000 direct HUKRI and on track 074° to JOREM and on track 042° to ZEMAB and hold.

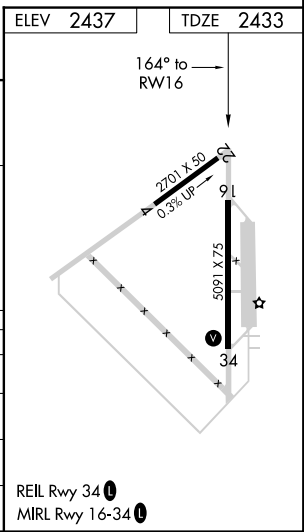
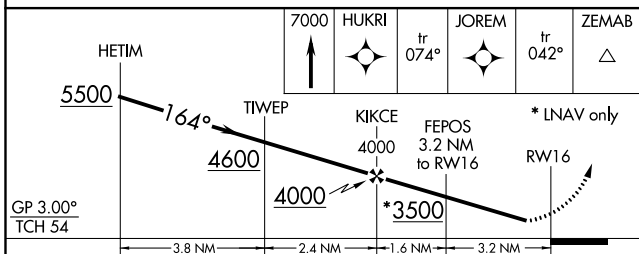
AWOS-3PT 132.425	SEATTLE CENTER 126.15 269.475	UNICOM 122.8 (CTAF)
----------------------------	---	-------------------------------



NW-1, 02 DEC 2021 to 30 DEC 2021

NW-1, 02 DEC 2021 to 30 DEC 2021

ELEV 2437	TDZE 2433
-----------	-----------



CATEGORY	A	B	C	D
LPV DA	2783-1 1/8	350 (400-1 1/8)		NA
LNAV/VNAV DA	2843-1 3/8	410 (500-1 3/8)		NA
LNAV MDA	3040-1	607 (700-1)	3040-1 3/4 607 (700-1 3/4)	NA
CIRCLING	3040-1	603 (700-1)	3040-1 3/4 603 (700-1 3/4)	NA

WAAS CH 60930 W34A	APP CRS 344°	Rwy Idg TDZE 2437 Apt Elev 2437	5089
--	------------------------	---	-------------

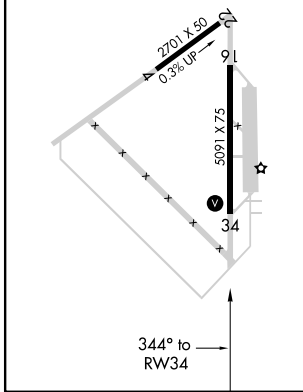
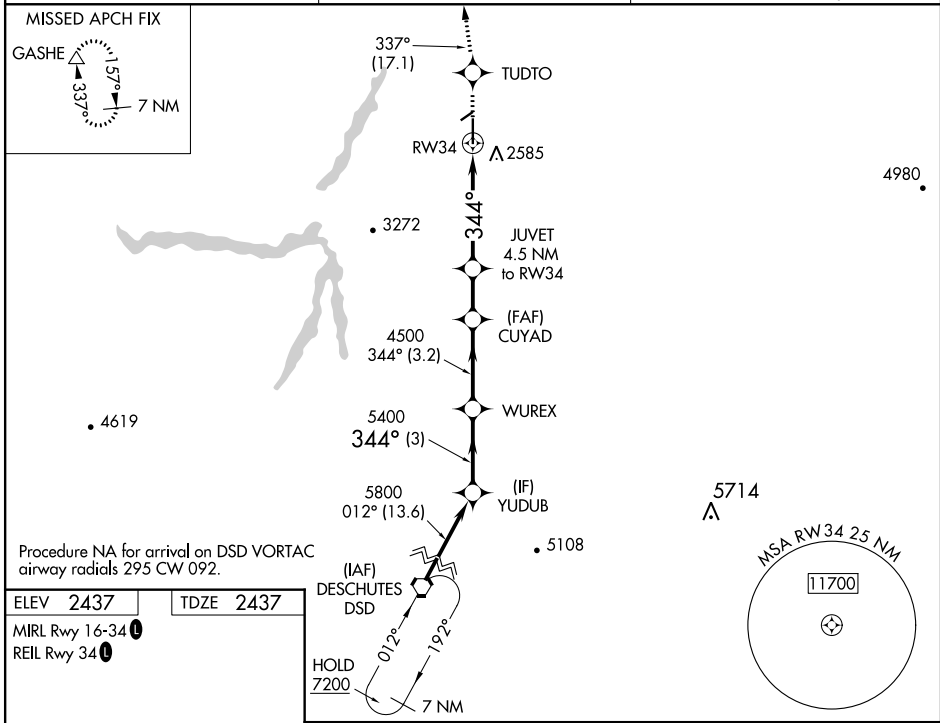
RNAV (GPS) RWY 34

MADRAS MUNI (S33)

NA Baro-VNAV NA when using Redmond altimeter setting. For uncompensated Baro-VNAV systems, LNAV/VNAV NA below -19°C (-2°F) or above 54°C (130°F). DME/DME RNP-0.3 NA. When local altimeter setting not received, use Redmond altimeter setting and increase all DA and MDA 580 feet; increase LPV and LNAV/VNAV all Cats visibility 2 miles, increase LNAV and Circling Cat A visibility ¼ mile, Cat B visibility ½ mile, and Cat C visibility 1½ mile.

MISSED APPROACH: Climb to 7000 direct TUDTO and on track 337° to GASHE and hold, continue climb-in-hold to 7000.

AWOS-3PT 132.425	SEATTLE CENTER 126.15 269.475	UNICOM 122.8 (CTAF)
----------------------------	---	-------------------------------



7000	TUDTO	GASHE	VGSI and RNAV glidepath not coincident (VGSI Angle 3.00/TCH 50).		YUDUB
↑	✦	△	tr 337°		
* LNAV only	JUVET 4.5 NM to RW34	CUYAD 4500	WUREX 5400	344°	5800
	RW34	3920*	4500		GP 3.00° TCH 52
	4.5 NM	1.8 NM	3.2 NM	3 NM	

CATEGORY	A	B	C	D
LPV DA		2687-1	250 (300-1)	NA
LNAV/VNAV DA		2687-1	250 (300-1)	NA
LNAV MDA	3000-1	563 (600-1)	3000-1½ 563 (600-1½)	NA
CIRCLING	3000-1	563 (600-1)	3020-1½ 583 (600-1½)	NA

NW-1, 02 DEC 2021 to 30 DEC 2021

NW-1, 02 DEC 2021 to 30 DEC 2021