

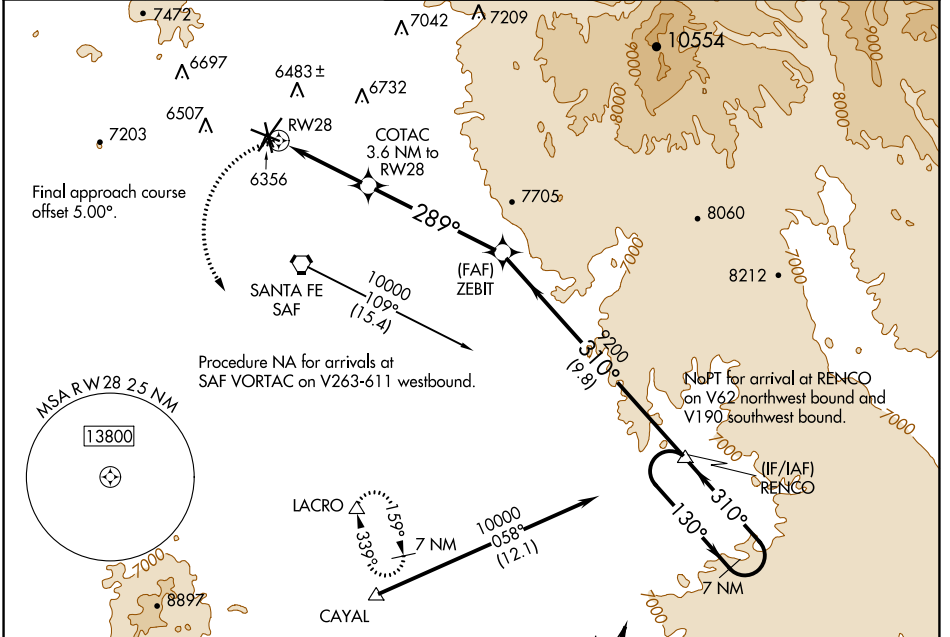
APP CRS	Rwy Idg	6301
289°	TDZE	6307
	Apt Elev	6349

RNAV (GPS) RWY 28

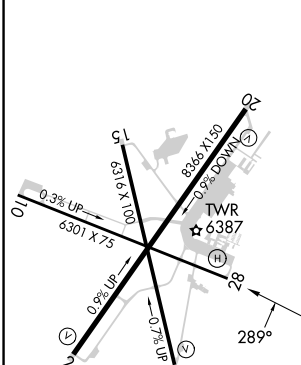
SANTA FE RGNL (SAF)

▽	DME/DME RNP-0.3 NA.	MISSED APPROACH: Climbing left turn to 9200 direct LACRO and hold.
----------	---------------------	--

ATIS 128.55	ALBUQUERQUE CENTER 132.8 346.35	SANTA FE TOWER ★ 119.5 (CTAF) 239.3	GND CON 121.7	UNICOM 122.95
-----------------------	---	---	-------------------------	-------------------------

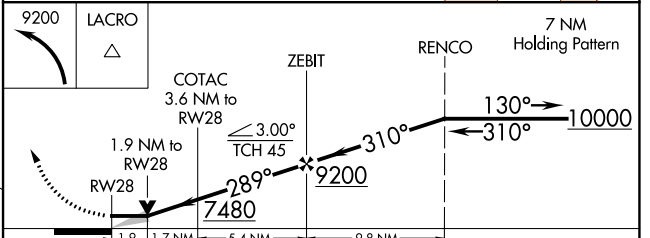


ELEV 6349	D	TDZE 6307
-----------	----------	-----------



REIL Rws 10, 15, 20 and 33	MIRL Rws 2-20 and 15-33
----------------------------	-------------------------

(IAF) OTTO	OTO	Procedure NA for arrival on OTO VOR airway radials 035 CW 074.
------------	-----	--



CATEGORY	A	B	C	D
LNAV MDA	6960-1	653 (700-1)	6960-1 $\frac{7}{8}$	653 (700-1 $\frac{7}{8}$)
C CIRCLING	6960-1	611 (700-1)	7340-3 991 (1000-3)	7660-3 1311 (1400-3)

SW-1, 22 FEB 2024 to 21 MAR 2024

SW-1, 22 FEB 2024 to 21 MAR 2024