

WAAS CH <b>86844</b> W <b>14B</b>	APP CRS <b>137°</b>	Rwy Idg TDZE Apt Elev	<b>4099</b> <b>23</b> <b>24</b>
---	------------------------	-----------------------------	---------------------------------------

# RNAV (GPS) Y RWY 14

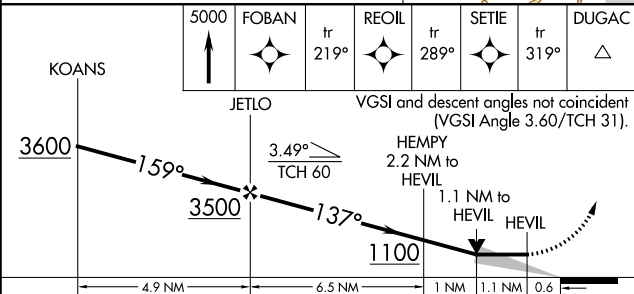
SAND POINT (SDP) (PASD)

RNP APCH-GPS.		MISSED APPROACH: Climb to 5000 on the RNAV missed approach route to DUGAC and hold.	
▼ ▲ Circling NA northeast of Rwy 14-32.			

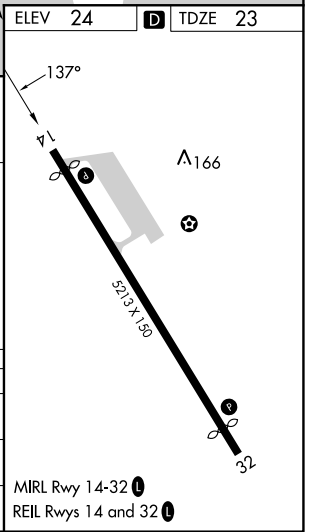
AWOS-3P <b>134.85</b>	ANCHORAGE CENTER <b>125.35 346.3</b>	COLD BAY RADIO <b>122.3</b>	CLNC DEL <b>122.3 (CTAF) 0</b>	UNICOM <b>122.8</b>
--------------------------	---	--------------------------------	-----------------------------------	------------------------



ELEV 24	TDZE 23
---------	---------



FOBAN	tr 219°	RECOIL	tr 289°	SETIE	tr 319°	DUGAC
5000						
CATEGORY		A	B	C	D	
LP	MDA	720-1	697 (700-1)	720-2	697 (700-2)	
LP	MDA	840-1	840-1¼	840-2½	817 (900-2½)	
		817 (900-1)	817 (900-1¼)			
▲	CIRCLING	840-1¼	816 (900-1¼)	1580-3	2240-3	
				1556 (1600-3)	2216 (2300-3)	



AK, 25 JAN 2024 to 21 MAR 2024

AK, 25 JAN 2024 to 21 MAR 2024