

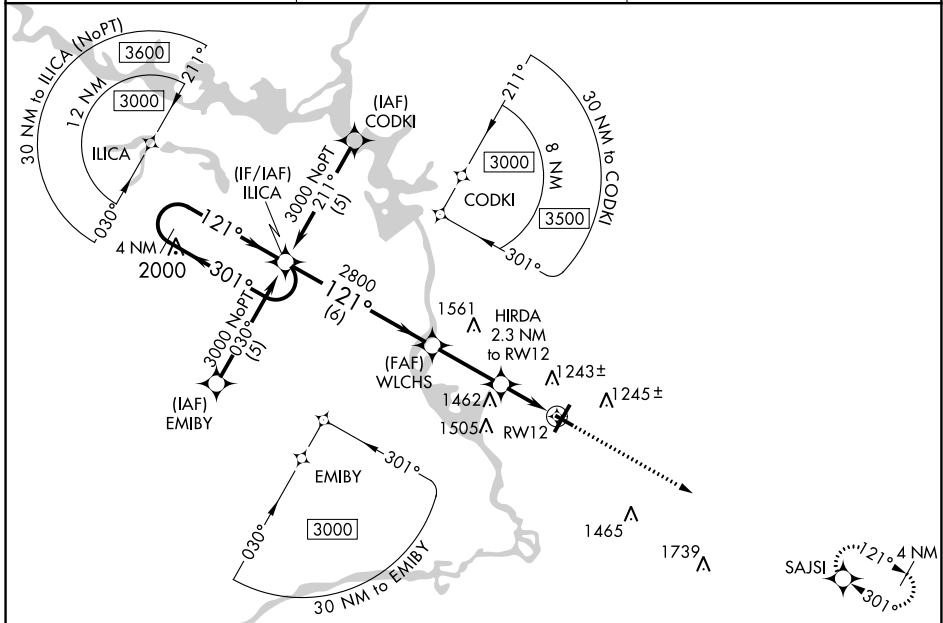
APP CRS	Rwy Idg	3635
121°	TDZE	1108
	Apt Elev	1110

RNAV (GPS) RWY 12

STEVENS POINT MUNI (STE)

RNP APCH - GPS.	<p>⚠ Rwy 12 helicopter visibility reduction below $\frac{3}{4}$ SM NA. When local altimeter not received, use Mosinee altimeter setting and increase all MDA 60 feet, increase LNAV Cat C and D visibility $\frac{1}{8}$ SM. VDP NA when using Mosinee altimeter setting.</p>	<p>MISSED APPROACH: Climb to 3000 direct SAJSI and hold.</p>
-----------------	--	--

AWOS-3 119.275	MINNEAPOLIS CENTER 124.4 317.7	UNICOM 122.7 (CTAF) 0
--------------------------	--	---------------------------------



EC-3, 22 FEB 2024 to 21 MAR 2024

EC-3, 22 FEB 2024 to 21 MAR 2024

4 NM Holding Pattern		ILICA		WLCBS		HIRDA 2.3 NM to RW12		RW12	
3000		301°		121°		3.05° TCH 40		1.9 NM to RW12	
6 NM		2.8 NM		0.4		1.9			
CATEGORY	A	B	C	D					
LNAV MDA	1760-1	652 (700-1)	1760- $\frac{1}{8}$	652 (700- $\frac{1}{8}$)					
CIRCLING	1760-1	650 (700-1)	1860- $\frac{1}{4}$ 750 (800- $\frac{1}{4}$)	1860- $\frac{1}{2}$ 750 (800- $\frac{1}{2}$)					

ELEV 1110	TDZE 1108
-----------	-----------

REIL Rwy 3 0

HIRL Rwy 3-21 and 12-30 0