

MAYNR ONE DEPARTURE (RNAV)  
(MAYNR1, MAYNR) 19MAY22

MIAMI HOMESTEAD GENERAL AVIATION (X51)  
HOMESTEAD, FLORIDA

AWOS-3  
118.375  
CTAF  
122.8  
MIAMI DEP CON  
125.5 354.1

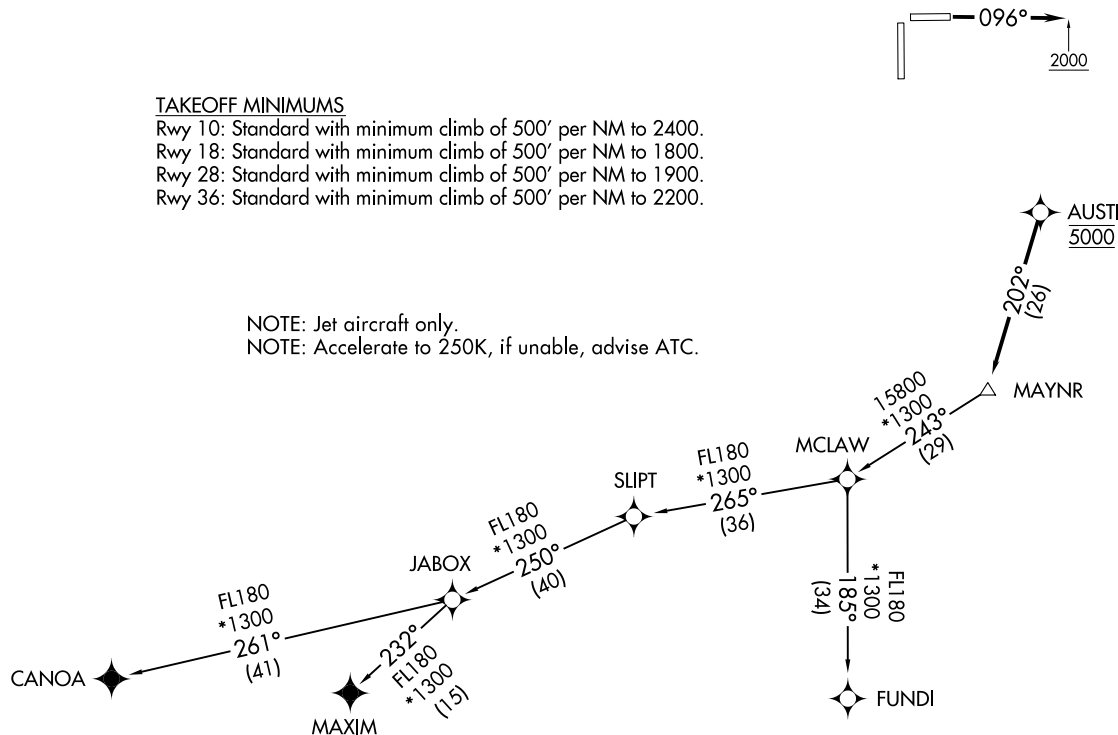
RNAV1 - DME/DME/IRU or GPS.  
From SLIPT to MAXIM: RNAV 1 - GPS.  
From SLIPT to CANOA: RNAV 1 - GPS.  
RADAR required.

TOP ALTITUDE:  
ASSIGNED BY ATC

#### TAKEOFF MINIMUMS

Rwy 10: Standard with minimum climb of 500' per NM to 2400.  
Rwy 18: Standard with minimum climb of 500' per NM to 1800.  
Rwy 28: Standard with minimum climb of 500' per NM to 1900.  
Rwy 36: Standard with minimum climb of 500' per NM to 2200.

NOTE: Jet aircraft only.  
NOTE: Accelerate to 250K, if unable, advise ATC.



NOTE: Chart not to scale.

(NARRATIVE ON FOLLOWING PAGE)

(MAYNR1, MAYNR) 22139  
MAYNR ONE DEPARTURE (RNAV)

AL-10263 (FAA)  
MIAMI HOMESTEAD GENERAL AVIATION (X51)  
HOMESTEAD, FLORIDA



DEPARTURE ROUTE DESCRIPTION

TAKEOFF RUNWAY 10: Climb on heading 096° to 2000, then as assigned by ATC for vectors to cross AUSTI at 5000, thence. . . .

TAKEOFF RUNWAYS 18, 28, 36: Climb on heading assigned by ATC for vectors to cross AUSTI at 5000, thence. . . .

. . . .on track 202° to MAYNR, then on assigned transition, maintain altitude as assigned by ATC, expect clearance to filed altitude within 10 minutes after departure.

- CANOA TRANSITION (MAYNR1.CANOA)
- FUNDI TRANSITION (MAYNR1.FUNDI)
- MAXIM TRANSITION (MAYNR1.MAXIM)

SE-3, 22 FEB 2024 to 21 MAR 2024

SE-3, 22 FEB 2024 to 21 MAR 2024