

WAAS CH <b>56246</b> <b>W16A</b>	APP CRS <b>159°</b>	Rwy Idg TDZE Apt Elev	<b>8800</b> <b>1287</b> <b>1288</b>
--	------------------------	-----------------------------	---

# RNAV (GPS) RWY 16L

NORTHWEST ARKANSAS NTL (X.N.A)

RNP APCH - GPS.

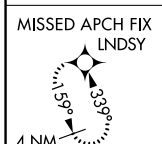
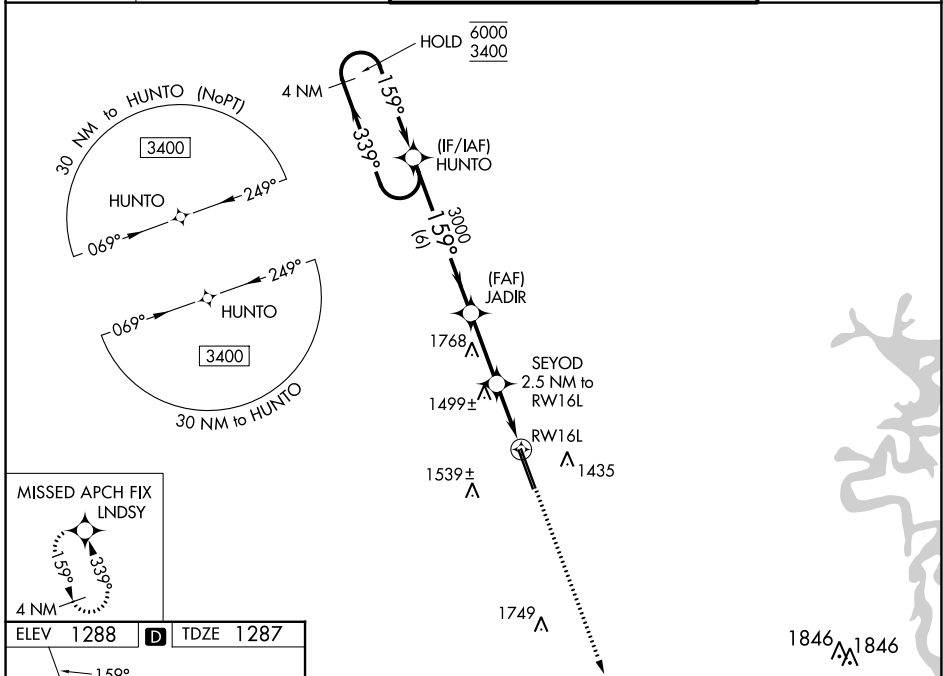
**⚠** For uncompensated Baro-VNAV systems, LNAV/VNAV NA below -15°C or above 54°C. For inop ALS, increase LPV Cat E visibility to RVR 4000, LNAV/VNAV Cat E visibility to 1¼ SM and LNAV Cats C, D, and E visibility to 1¾ SM. \*RVR 1800 authorized with use of FD or AP or HUD to DA.

MALSRL

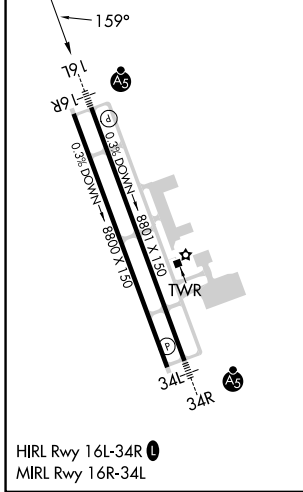


MISSED APPROACH:  
Climb to 3400 direct  
LND SY and hold.

ATIS <b>119.425</b>	RAZORBACK APP CON * <b>121.0 244.575</b>	NORTHWEST ARKANSAS NTL TOWER * <b>127.1 (CTAF) 0</b>	GND CON <b>121.9</b>
------------------------	---	---	-------------------------



ELEV 1288	<b>D</b>	TDZE 1287
-----------	----------	-----------



4 NM Holding Pattern		VGSi and RNAV glidepath not coincident (VGSi Angle 3.00/TCH 52).			3400	LND SY
6000 ← 339°		→ 159°		3000		
GP 3.00° TCH 57		3000		2140	1.3 NM to RWY 16L	
		6 NM		2.7 NM	1.2	1.3
CATEGORY	A	B	C	D	E	
LPV DA*	1487/24		200 (200-½)			
LNAV/VNAV DA	1710/40		423 (500-¾)			
LNAV MDA	1760/24	473 (500-½)		1760/50 473 (500-1)		
CIRCLING	1760-1	472 (500-1)	2040-2¼ 752 (800-2¼)	2080-2½ 792 (800-2½)	2080-2¾ 792 (800-2¾)	

SC-1, 22 FEB 2024 to 21 MAR 2024

SC-1, 22 FEB 2024 to 21 MAR 2024