

WAAS CH 49031 W13A	APP CRS 139°	Rwy Idg 4399 TDZE 1942 Apt Elev 1944
--	------------------------	---

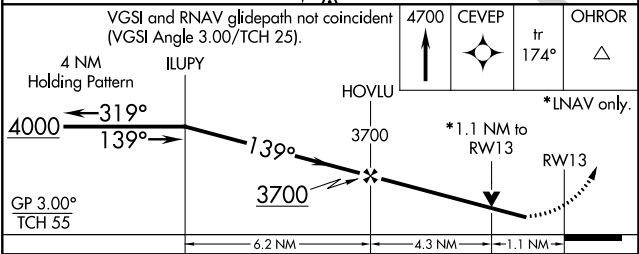
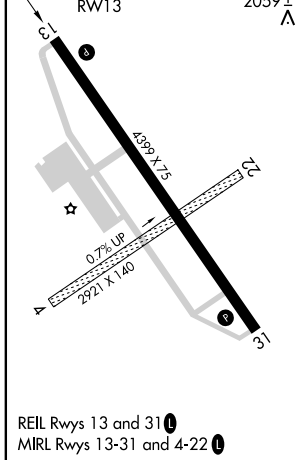
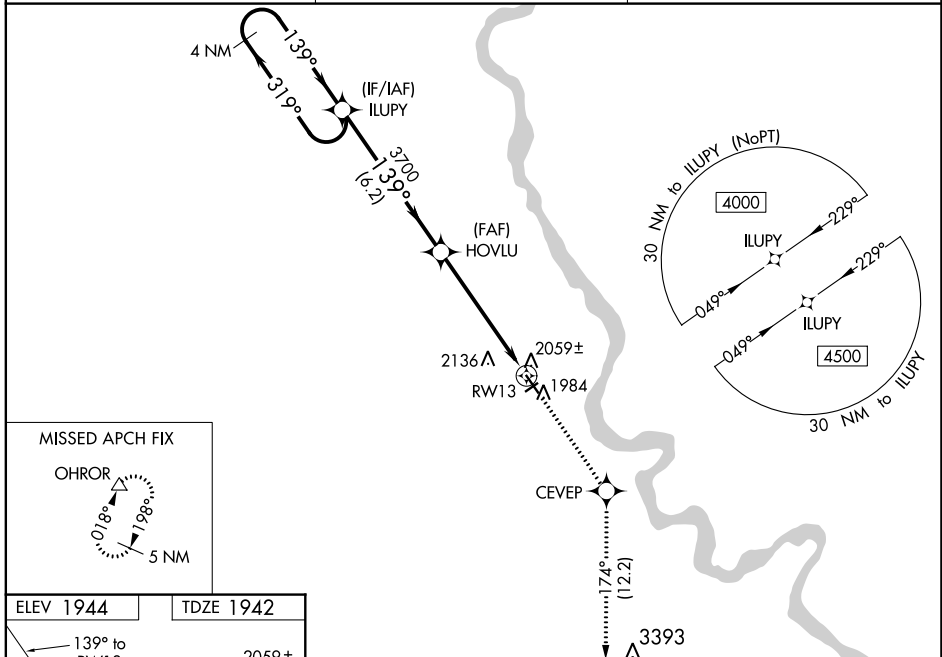
RNAV (GPS) RWY 13

MANDAN RGNL/LAWLER FLD (Y19)

ASR Baro-VNAV NA when using Bismarck altimeter setting. For uncompensated Baro-VNAV systems, LNAV/VNAV NA below -18°C (0°F) or above 54°C (130°F). DME/DME RNP-0.3 NA. Helicopter visibility reduction below 3/4 SM not authorized. VDP NA when using Bismarck altimeter setting. When local altimeter setting not received, use Bismarck altimeter setting and increase all DA 54 feet and LPV all Cats visibility 1/4 mile, LNAV/VNAV all Cats visibility 1/8 mile, increase all MDA 60 feet and LNAV Cat C/D and Circling Cat D visibility 1/4 mile. Circling to Rwy 4 and 22 NA.

MISSED APPROACH: Climb to 4700 direct CEVEP and on track 174° to OHROR and hold.

AWOS-3 118.225	BISMARCK APP CON ★ 126.3 298.9	UNICOM 122.8 (CTAF) 0
--------------------------	--	---------------------------------



CATEGORY	A	B	C	D
LPV DA		2192-3/4	250 (300-3/4)	
LNAV/VNAV DA		2244-1	302 (300-1)	
LNAV MDA		2320-1	378 (400-1)	
C CIRCLING	2360-1 416 (500-1)	2460-1 516 (600-1)	2460-1½ 516 (600-1½)	2560-2 616 (700-2)

WAAS CH 93731 W31A	APP CRS 319°	Rwy Idg 4399 TDZE 1943 Apt Elev 1944
--	------------------------	---

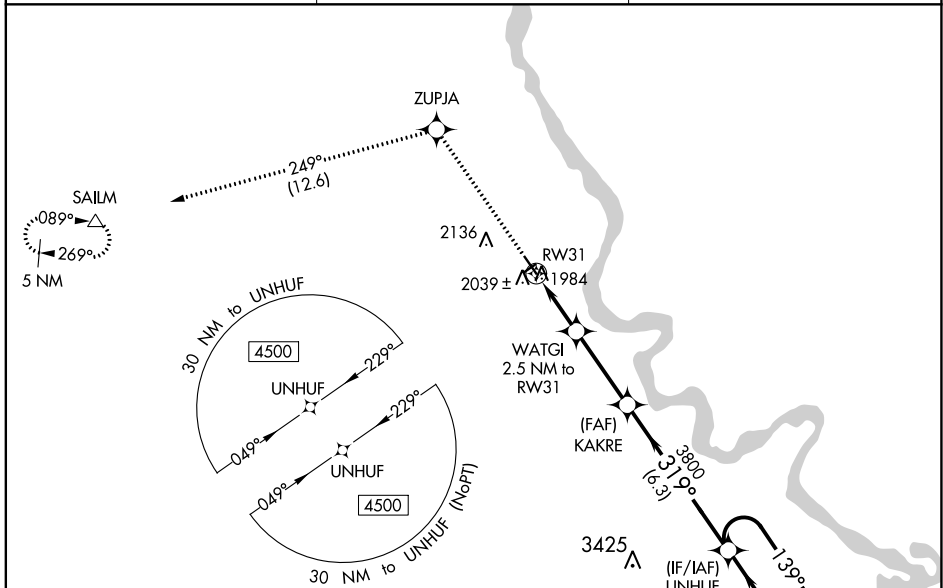
RNAV (GPS) RWY 31

MANDAN RGNL/LAWLER FLD (Y19)

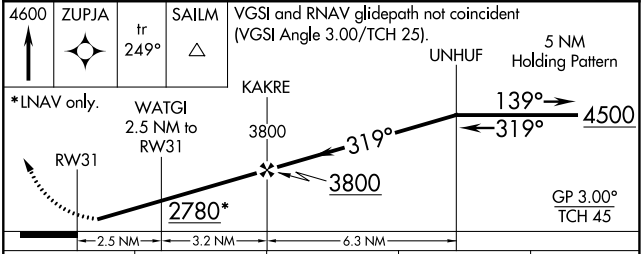
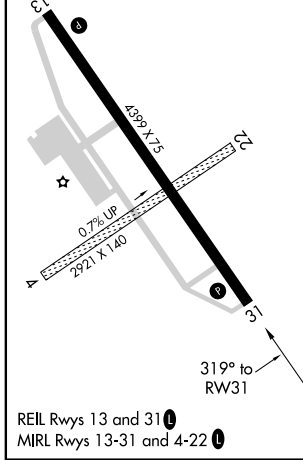
⚠ ASR Baro-VNAV NA when using Bismarck altimeter setting. For uncompensated Baro-VNAV systems, LNAV/VNAV NA below -18°C (0°F) or above 54°C (130°F). DME/DME RNP-0.3 NA. When local altimeter setting not received, use Bismarck altimeter setting and increase all DA 54 feet and LNAV/VNAV all Cats visibility 1/8 mile, increase all MDA 60 feet and LNAV Cat C/D visibility 1/8 mile and Circling Cat D 1/4 mile. Helicopter visibility reduction below 3/4 SM NA. Circling to Rwys 4 and 22 NA.

MISSED APPROACH: Climb to 4600 direct ZUPJA and on track 249° to SAILM and hold.

AWOS-3 118.225	BISMARCK APP CON * 126.3 298.9	UNICOM 122.8 (CTAF) 0
--------------------------	--	---------------------------------



ELEV 1944	TDZE 1943
	2059 ± ⚠



CATEGORY	A	B	C	D
LPV DA		2193-1	250 (300-1)	
LNAV/VNAV DA		2220-1	277 (300-1)	
LNAV MDA		2300-1	357 (400-1)	
C CIRCLING	2360-1 416 (500-1)	2460-1 516 (600-1)	2460-1½ 516 (600-1½)	2560-2 616 (700-2)

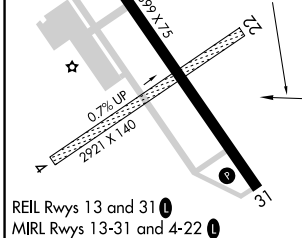
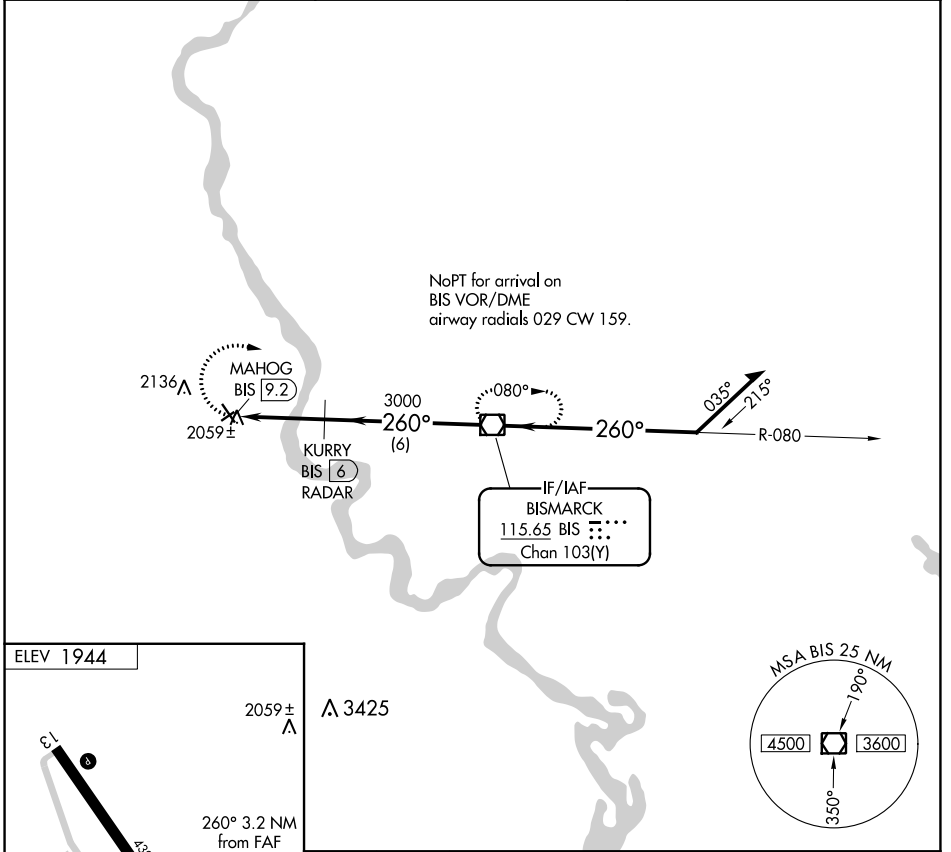
VOR/DME BIS 115.65 Chan 103(Y)	APP CRS 260°	Rwy Idg TDZE Apt Elev N/A N/A 1944
--	------------------------	--

VOR-A

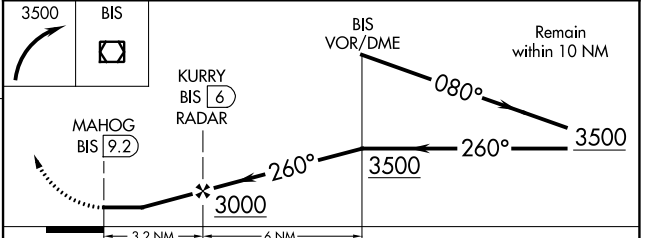
MANDAN RGNL/LAWLER FLD (Y19)

⚠ DME or RADAR required. When local altimeter setting not received, use Bismarck altimeter setting and increase all MDA 60 feet, and Cat D visibility ¼ mile. Circling to Rwy 4 and 22 NA.
⚠ ASR MISSED APPROACH: Climbing right turn to 3500 direct BIS VOR/DME and hold.

AWOS-3 118,225	BISMARCK APP CON ★ 126.3 298.9	UNICOM 122.8 (CTAF) 0
--------------------------	--	---------------------------------



FAF to MAP 3.2 NM					
Knots	60	90	120	150	180
Min:Sec	3:12	2:08	1:36	1:17	1:04



CATEGORY	A	B	C	D
C CIRCLING	2360-1 416 (500-1)	2460-1 516 (600-1)	2460-1½ 516 (600-1½)	2560-2 616 (700-2)

NC-1, 22 FEB 2024 to 21 MAR 2024

NC-1, 22 FEB 2024 to 21 MAR 2024